

Map 2a - Assich Key Features

Author: u321895

Scale @ A1: 1:10,000

Date: 25/07/2023

Legend

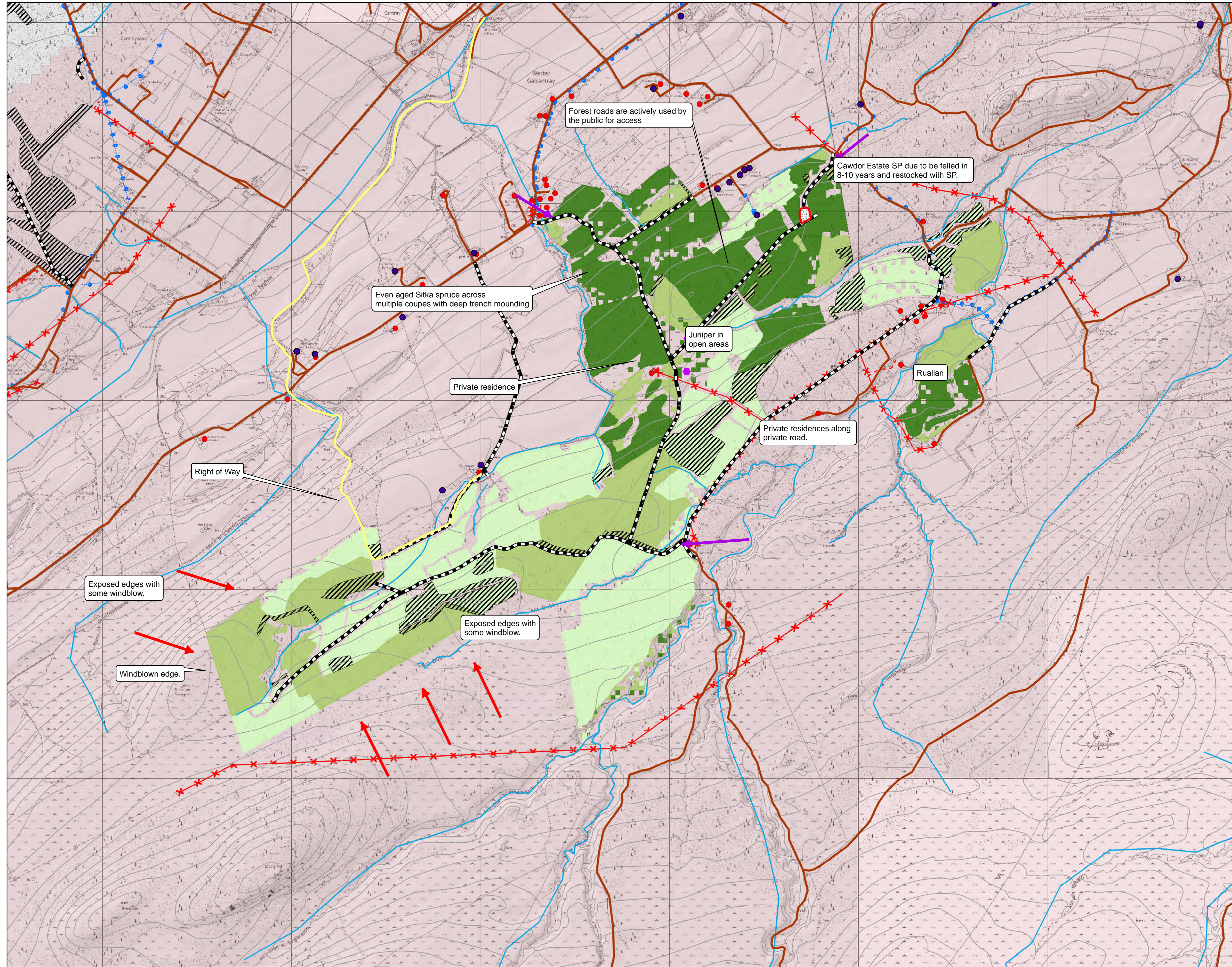
- Conservation feature
- Private_Water_Supplies
- Rights_of_Way
- ➔ Entrances
- ➔ Exposed edge
- Buildings
-  Assich_quarry
-  Forest Roads
- Public_Roads
- Watercourses
-  Larch_sub_compartments
- ✕✕ Overhead powerline
- - - Underground powerline
- Water Pipelines
- Establishing/young forest
- Established forest (planted in 90's)
- Mature forest - over 60yrs

Drainage Area

Nairn East PVA



Reproduced by permission of Ordnance Survey on behalf of HMSO. © Crown copyright and database right [2023]. All rights reserved. Ordnance Survey Licence number [100021242].
© Getmapping Plc and Bluesky International Limited 2023.



Map 2b - Laiken Key Features

Author: u321895

Scale @ A1: 1:8,000

Date: 25/07/2023

Legend

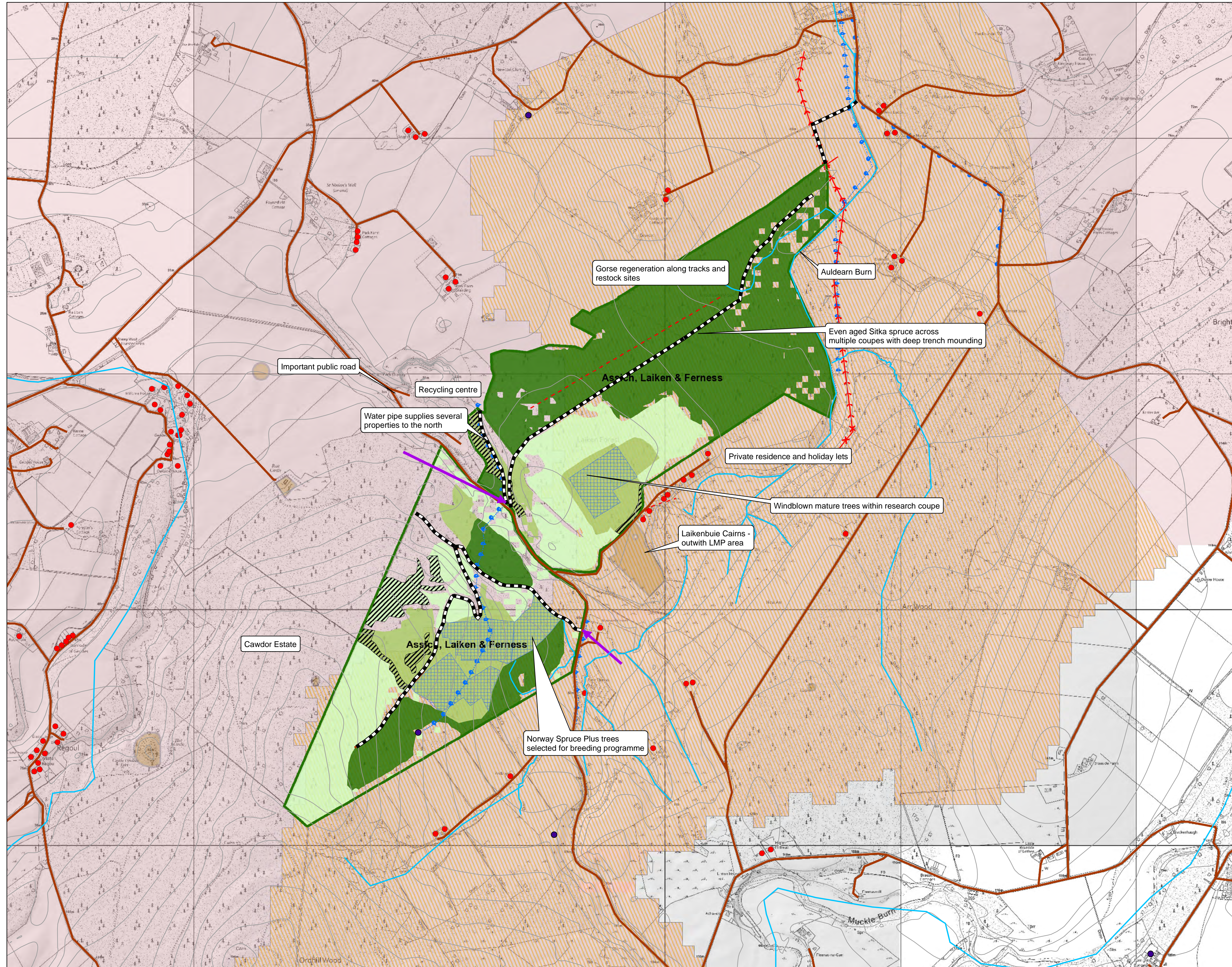
- Private_Water_Supplies
- Watercourses
- ➔ Entrances
- Buildings
- Forest Roads
- Public roads
- Scheduled Monuments
- x Overhead powerline
- Underground powerline
- + Water Pipelines
- Forest Research Experiment site
- Larch_sub_compartments
- Establishing/young forest
- Established forest (planted in 90's)
- Mature forest (over 60 yrs)

Drainage Area

- Nairn East PVA
- Auldearn



Reproduced by permission of Ordnance Survey on behalf of HMSO. © Crown copyright and database right [2023]. All rights reserved. Ordnance Survey Licence number [100021242]. © Getmapping Plc and Bluesky International Limited 2023.



Map 2c - Ferness Key Features

Author: u321895

Scale @ A1: 1:8,000

Date: 25/07/2023

Legend

- Conservation feature
- Private_Water_Supplies
- Watercourses
- ➔ Entrances
- Buildings
- SSSI/ SAC
- PAWS
- Forest Roads
- Larch_sub_compartments
- Overhead powerline
- Underground powerline
- Water Pipelines
- Public roads
- Establishing/young forest
- Established forest (planted in 90's)
- Mature forest (over 60 yrs)

Drainage Area

Findhorn



Reproduced by permission of Ordnance Survey on behalf of HMSO. © Crown copyright and database right [2023]. All rights reserved. Ordnance Survey Licence number [100021242].

© Getmapping Plc and Bluesky International Limited 2023.

Scotland's National
Forest Estate is
responsibly
managed to the
UK Woodland
Assurance Standard.

