







**Map 15 Water supplies and catchments**

Author: Susannah Hughes

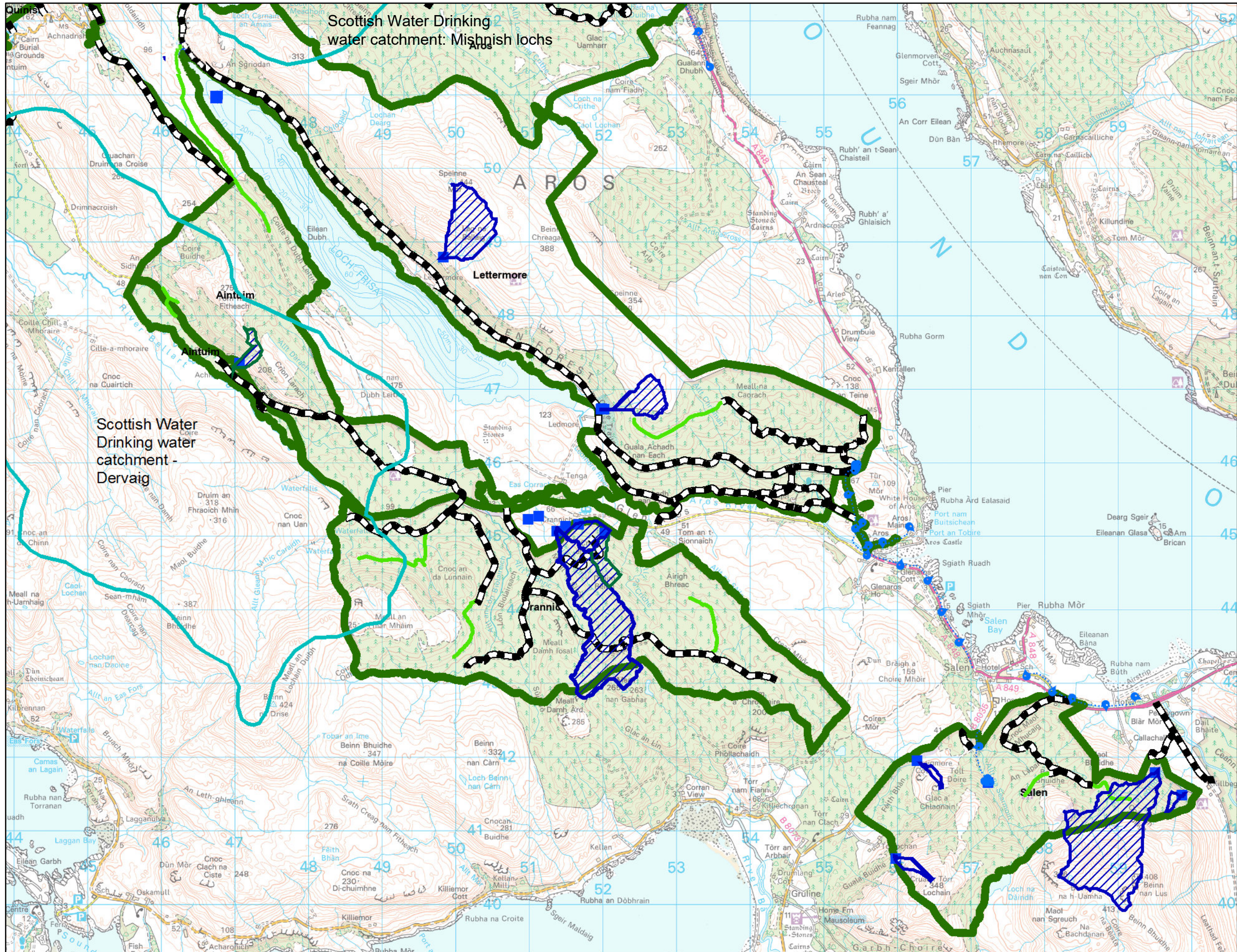
Scale @ A3: 1:50,000

Date: 01/11/2023

**Legend**

-  Mull catchments
-  Water Pipelines
-  Water Supply Points
-  Forest Roads
-  Planned Roads
-  FLS Forests

Scottish Water Drinking water catchment (Dervaig) aligns with SEPA riverbody catchment for priority species.



0 0.2250.45 0.9 1.35 1.8 km



Reproduced by permission of Ordnance Survey on behalf of HMSO.  
© Crown copyright and database right 2023. All rights reserved.  
Ordnance Survey Licence number 100024925.  
© Getmapping Plc and Bluesky International Limited 2023.

Scotland's national forests and land are responsibly managed to the UK Woodland Assurance Standard.

