

Map 10 -










Landscape Context

Author: Renate Jephcott

Scale @ A1: 1:20,000 or @ A3: 1:40,000

Date: 08/12/2021

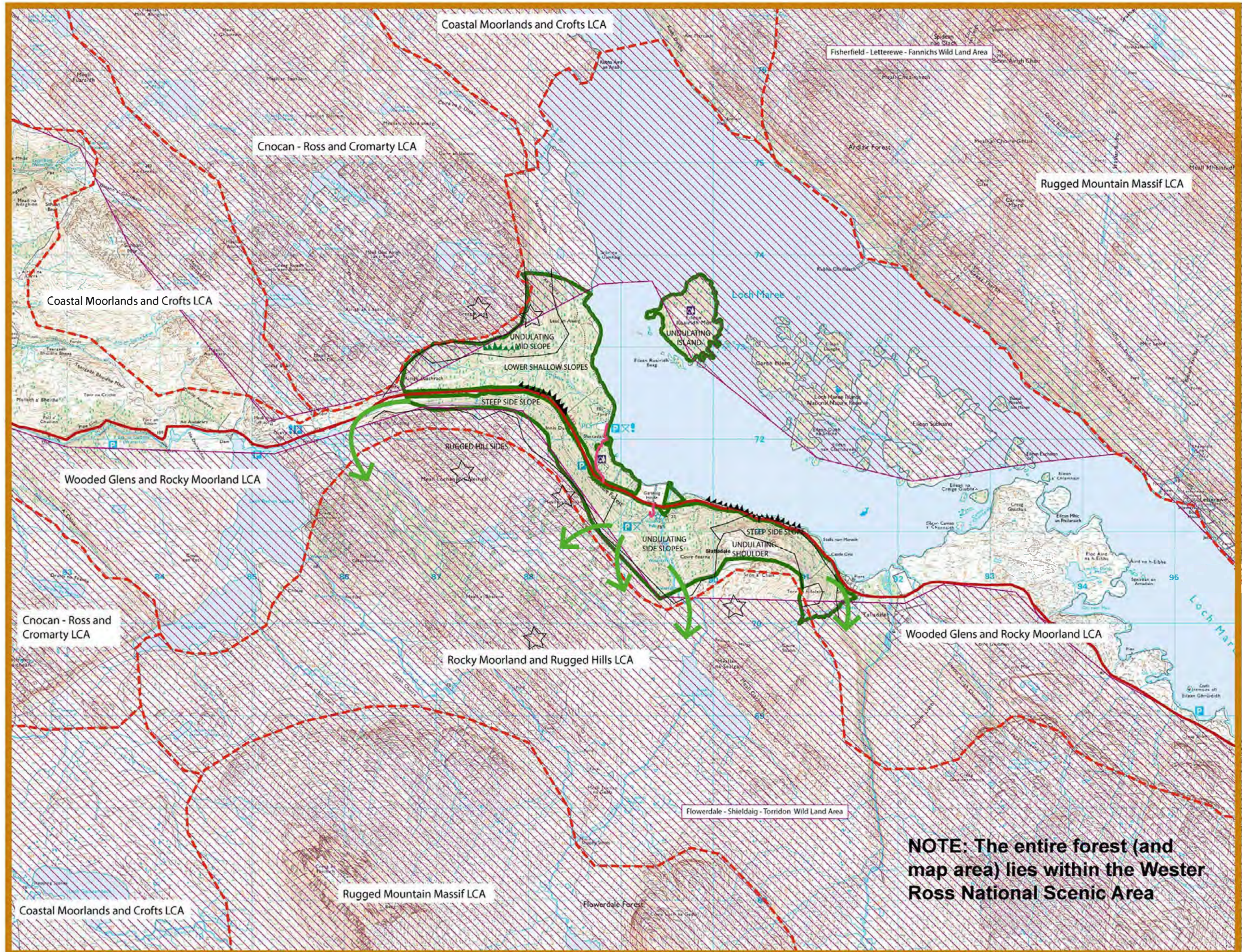
Legend

-  Landscape Management Plan area
-  Landscape Character Type boundaries
-  Wild Land Areas (Scotland)
-  National Scenic Area (covers all of forest area and map)
-  Local summit, landform used to influence shape of future forest
-  Local glens and watercourse / riparian zones which could increase unity with surrounding area
-  Local slope character areas
-  Disruptive retentions and rows of trees. Landscape character would benefit from their early removal
-  Disruptive retentions. Landscape character would benefit from planting or swift regeneration of trees to help integrate retention.

0 0.1750 35 0.7 1.05 1.4 km

Reproduced by permission of Ordnance Survey on behalf of © Crown copyright and database right 2021. All rights reserved. Ordnance Survey Licence number 100024925. © Getmapping Plc and Bluesky International Limited 2021.

Scotland's national forests and land are responsibly managed to the UK Woodland Assurance Standard.



NOTE: The entire forest (and map area) lies within the Wester Ross National Scenic Area