






M9: Concept

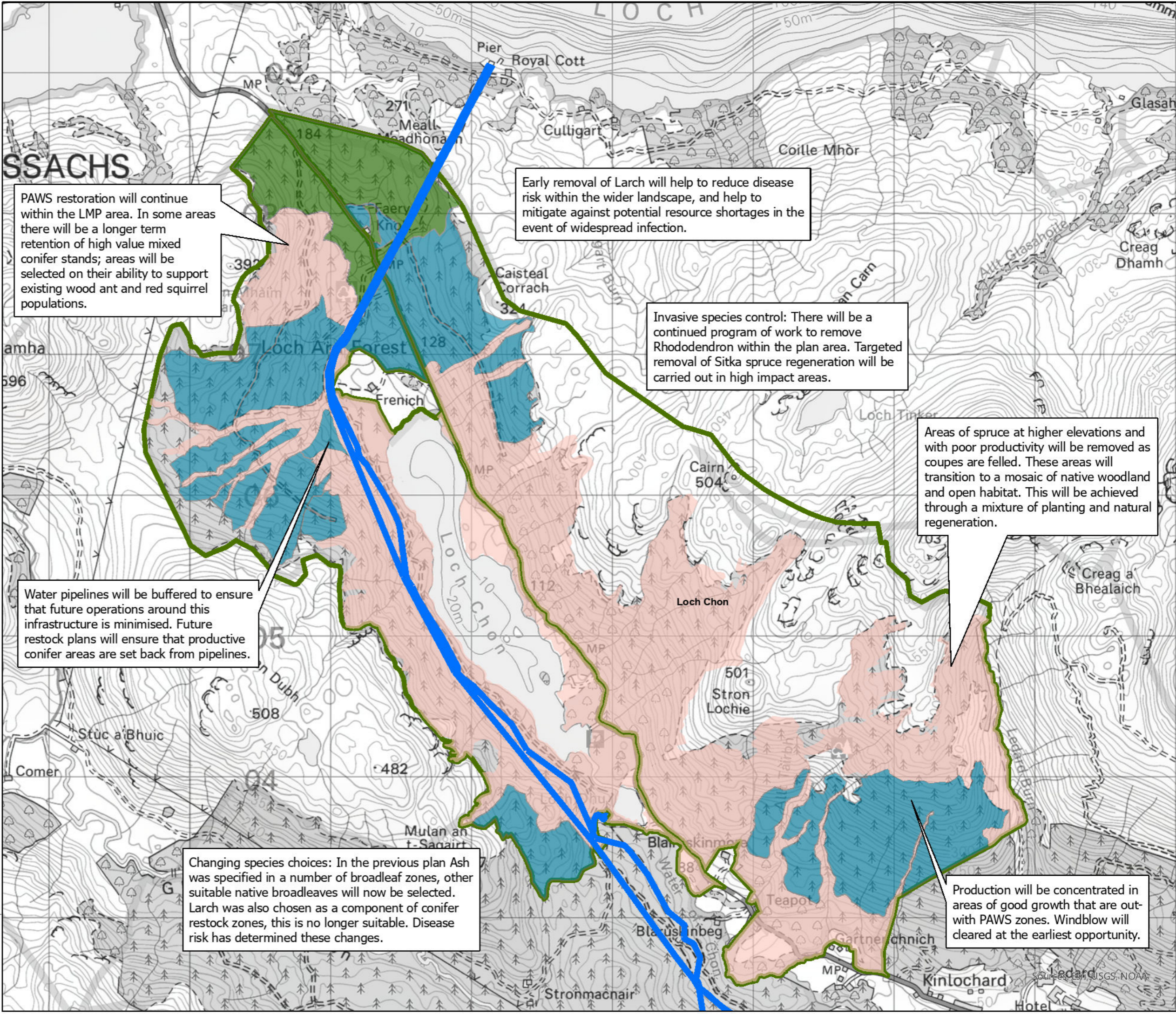
Author: FLS Planning
Scale @ A3: 1:25,000
Date: 05/12/2025

Legend

-  Water Pipelines
-  LMP Boundary

Concept Management Zones

-  Broadleaf
-  Scots Pine & Broadleaf
-  Productive Conifer



PAWS restoration will continue within the LMP area. In some areas there will be a longer term retention of high value mixed conifer stands; areas will be selected on their ability to support existing wood ant and red squirrel populations.

Early removal of Larch will help to reduce disease risk within the wider landscape, and help to mitigate against potential resource shortages in the event of widespread infection.

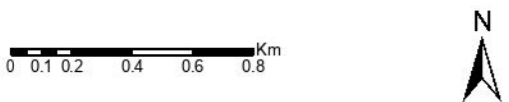
Invasive species control: There will be a continued program of work to remove Rhododendron within the plan area. Targeted removal of Sitka spruce regeneration will be carried out in high impact areas.

Areas of spruce at higher elevations and with poor productivity will be removed as coupes are felled. These areas will transition to a mosaic of native woodland and open habitat. This will be achieved through a mixture of planting and natural regeneration.

Water pipelines will be buffered to ensure that future operations around this infrastructure is minimised. Future restock plans will ensure that productive conifer areas are set back from pipelines.

Changing species choices: In the previous plan Ash was specified in a number of broadleaf zones, other suitable native broadleaves will now be selected. Larch was also chosen as a component of conifer restock zones, this is no longer suitable. Disease risk has determined these changes.

Production will be concentrated in areas of good growth that are out-with PAWS zones. Windblow will be cleared at the earliest opportunity.



Reproduced by permission of Ordnance Survey on behalf of HMSO. © Crown copyright and database right [2026]. All rights reserved. Ordnance Survey Licence number [100024925]. © Getmapping Plc and Bluesky International Limited 2026.

Declaration by FLS as an Operator. All timber arising from the FLS National Forests and Land represents a negligible risk under EUTR (No 995/210).

Scotland's National Forest Estate is responsibly managed to the UK Woodland Assurance Standard.




Sources: Ordnance Survey, USGS, NOAA