

Variable density planting of Scots pine, downy and silver birch, rowan, aspen - approx. 1200-1600 stems/ha with 30% open space. Green hatched areas of naturally regeneration birch and rowan from roadside seed source.

Lowland mixed deciduous woodland in riparian zone of Prosen Water alongside grazing fields.

Green hatched areas of naturally regeneration birch and rowan from roadside seed source.

Wet open habitats mosaic of peatland, flushes and grazed grassland, with stream side planting of willows, alder, birch and aspen, running up the water courses. Potential to block artificial drains.

Restoration of degraded peatland with heath and scrub buffer between woodland creation.

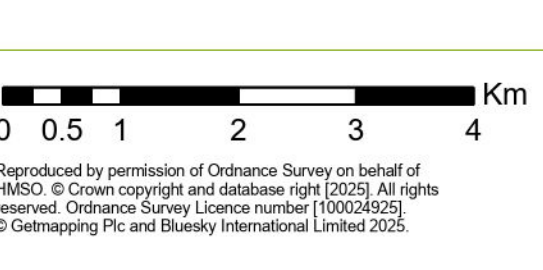
Variable density planting of Scots pine, downy and silver birch, rowan, aspen - approx. 1200-1600 stems/ha with 30% open space.

**Legend**

Montane heath mosaic	Proposed fences	Valley side woodland	Watercourses
Productive conifer plantation	Core Paths	Peatland habitat mosaic	Upland Flush Fen & Swamp
Low density open wooded habitat	ScotWays Rights of Way	Waders open habitat	National Nature Reserves
Ranger Access	Forest Roads	Fen, Marsh & Swamp	Montane willow scrub
NRF Fences	Riparian woodland	National Forest & Land Boundary	Water

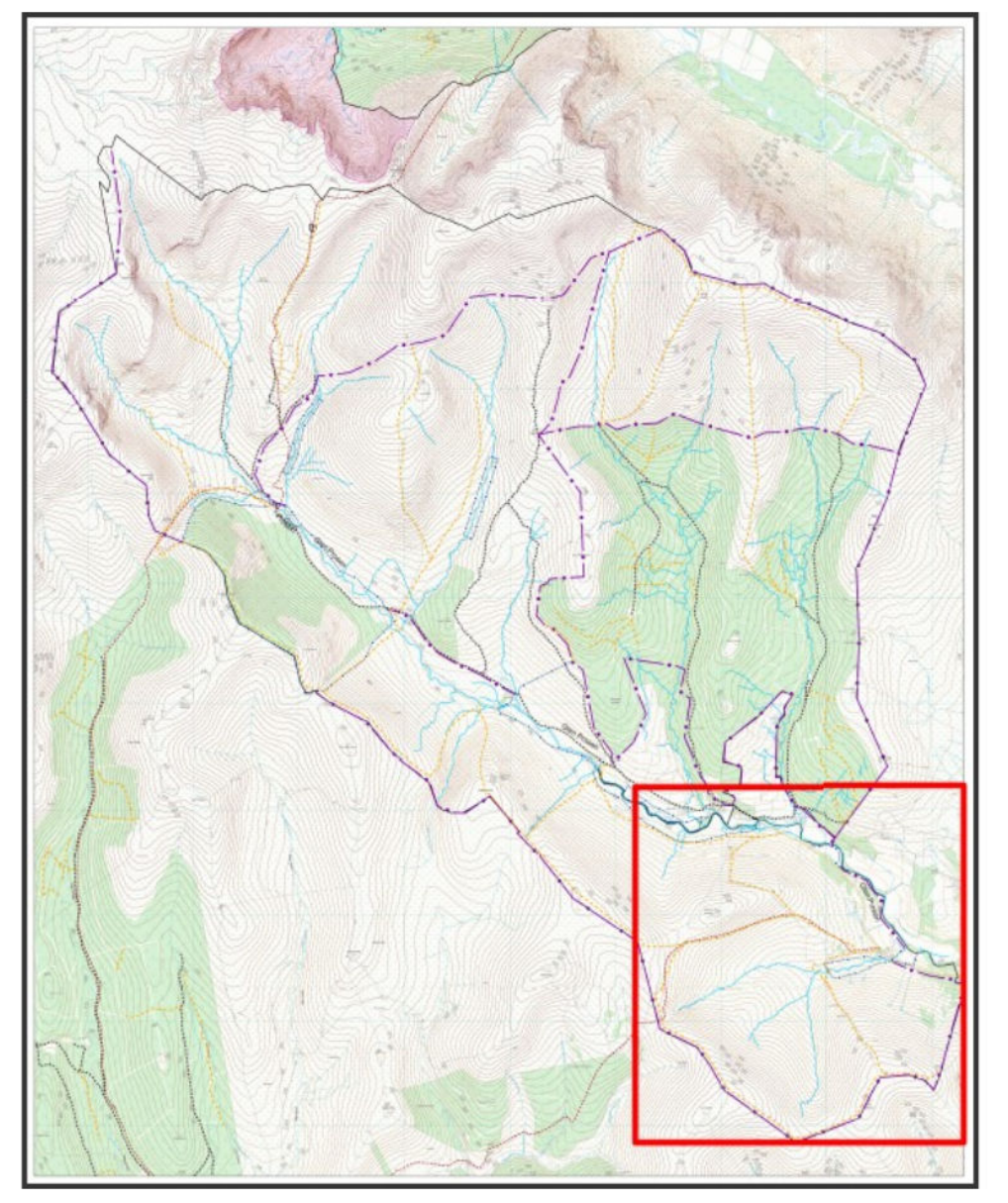
**Area 1 - Cormuir**

Scale @ A0: 1:64,259  
Date: 02/02/2025  
Author: Sophie.Cade



Declaration by FLS as an Operator.  
All timber arising from the FLS National Forests and Land represents a negligible risk under EUTR (No 995/210).

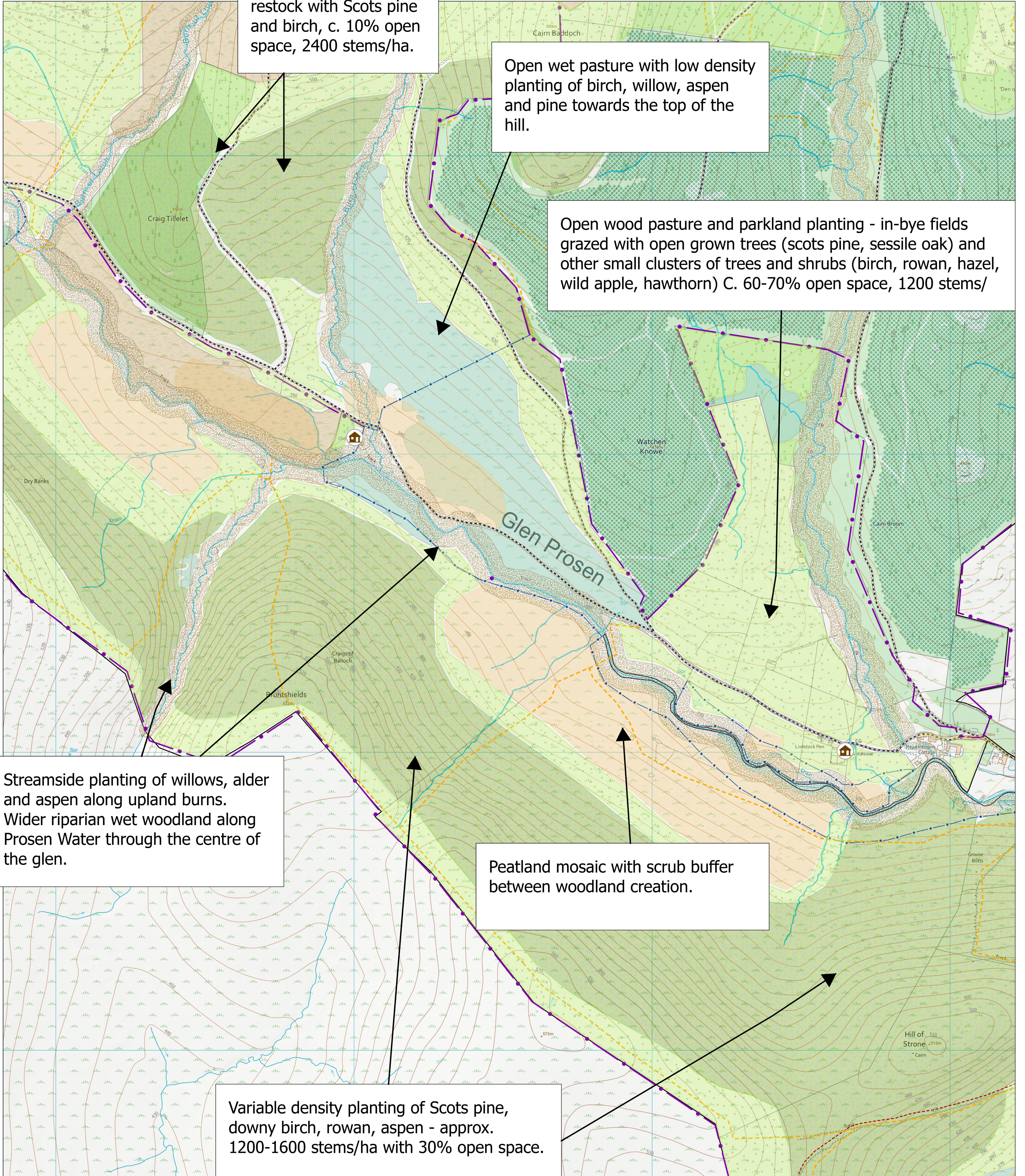
Scotland's National Forest Estate is responsibly managed to the UK Woodland Assurance Standard.



Craig Tillelet clearfell - restock with Scots pine and birch, c. 10% open space, 2400 stems/ha.

Open wet pasture with low density planting of birch, willow, aspen and pine towards the top of the hill.

Open wood pasture and parkland planting - in-bye fields grazed with open grown trees (scots pine, sessile oak) and other small clusters of trees and shrubs (birch, rowan, hazel, wild apple, hawthorn) C. 60-70% open space, 1200 stems/ha



Streamside planting of willows, alder and aspen along upland burns. Wider riparian wet woodland along Prosen Water through the centre of the glen.

Peatland mosaic with scrub buffer between woodland creation.

Variable density planting of Scots pine, downy birch, rowan, aspen - approx. 1200-1600 stems/ha with 30% open space.

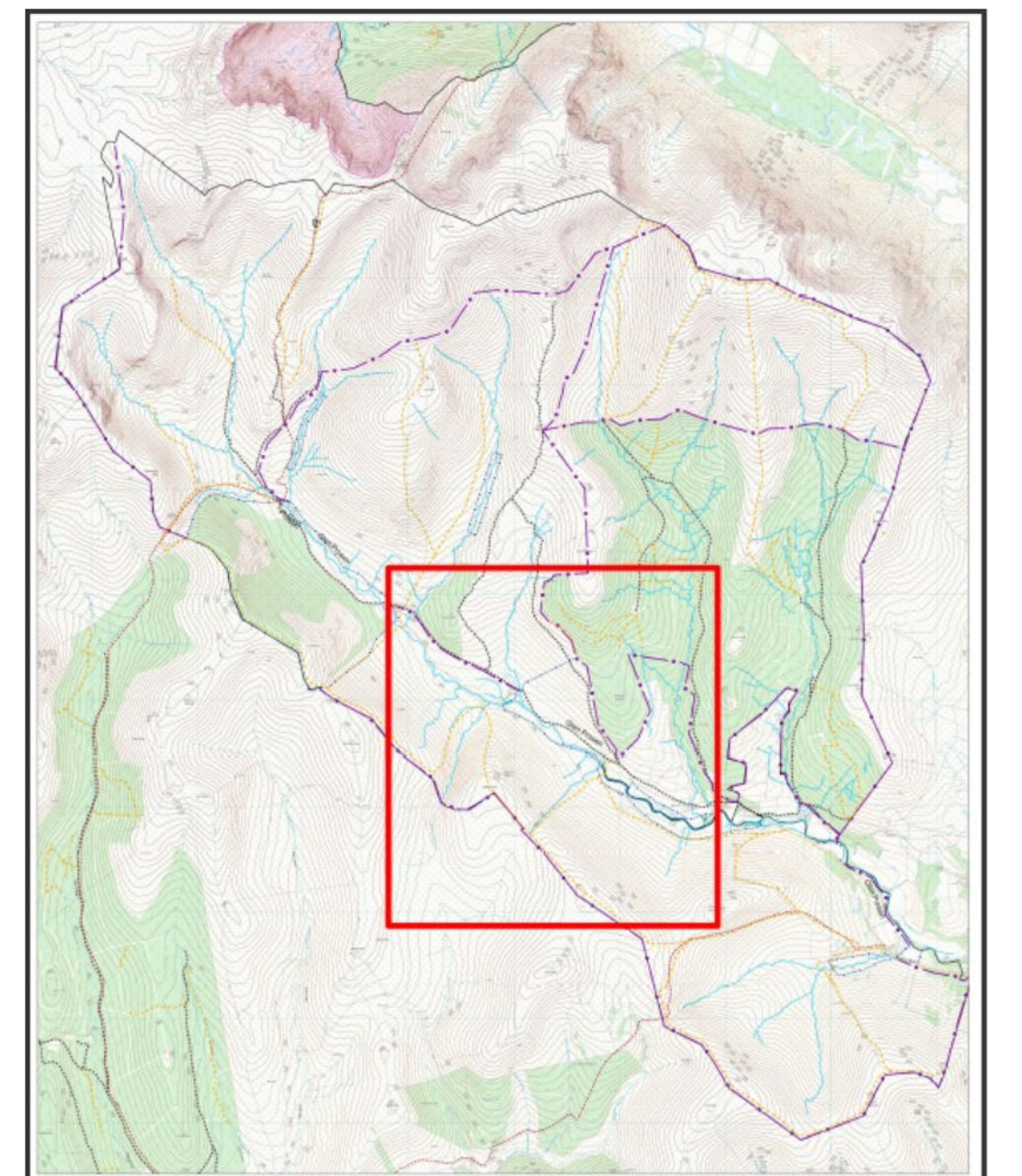
**Legend**

Montane heath mosaic	Proposed fences	Valley side woodland	Watercourses
Productive conifer plantation	Core Paths	Peatland habitat mosaic	Upland Flush Fen & Swamp
Low density open wooded habitat	ScotWays Rights of Way	Waders open habitat	National Nature Reserves
Ranger Access	Forest Roads	Fen, Marsh & Swamp	Montane willow scrub
NRF Fences	Riparian woodland	National Forest & Land Boundary	

**Area 2 - Lower Glen**  
 Scale @ A0: 1:64,259  
 Date: 02/02/2025  
 Author: Sophie.Cade

Declaration by FLS as an Operator.  
 All timber arising from the FLS National Forests and Land represents a negligible risk under EUTR (No 995/210).

Scotland's National Forest Estate is responsibly managed to the UK Woodland Assurance Standard.



King's Seat clear fell - planted Scots pine, birch, rowan, aspen, approx. 40% open space at 1600 stems/ha

Streamside planting of willows, alder and aspen along upland burns.

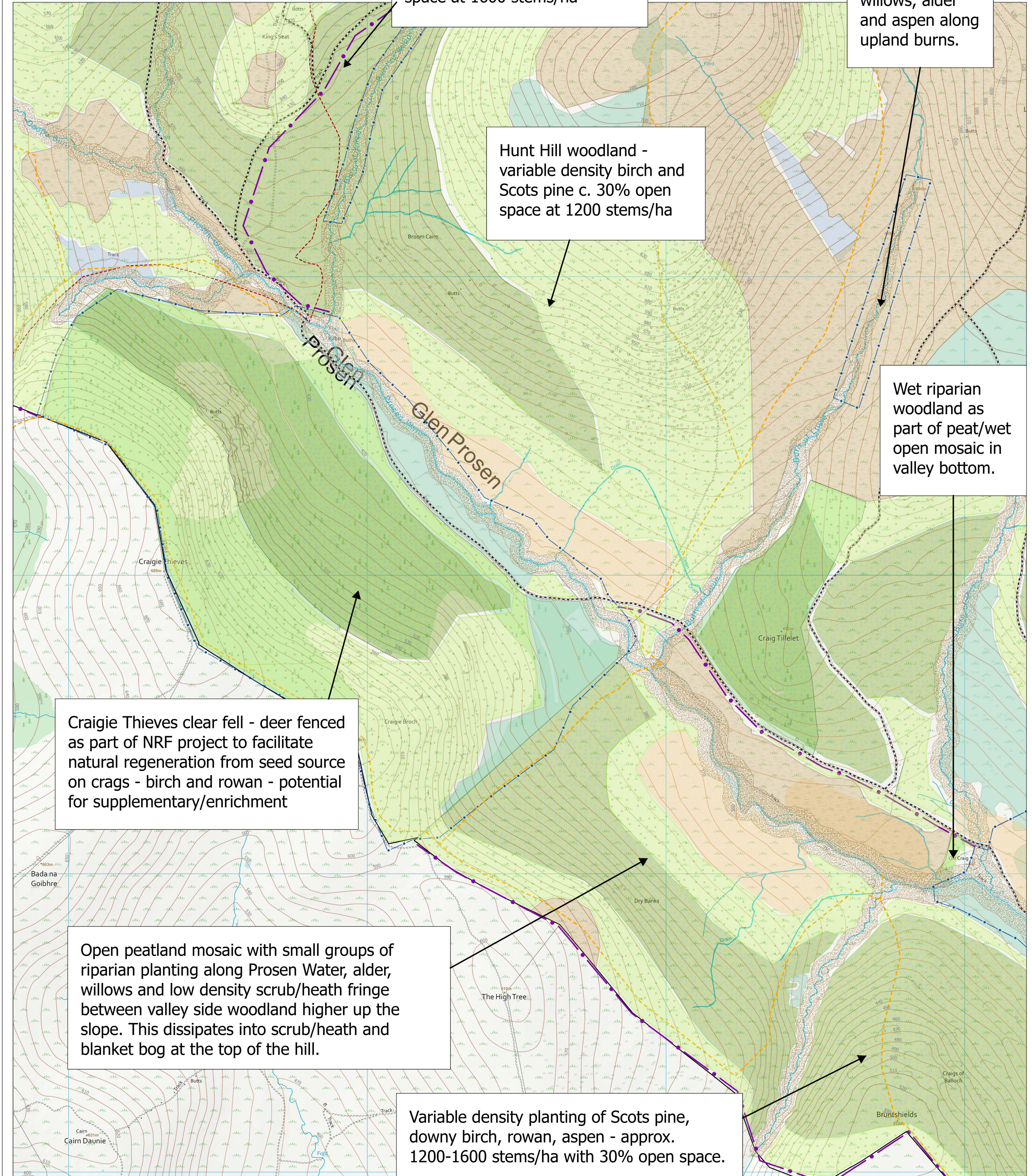
Hunt Hill woodland - variable density birch and Scots pine c. 30% open space at 1200 stems/ha

Wet riparian woodland as part of peat/wet open mosaic in valley bottom.

Craigie Thieves clear fell - deer fenced as part of NRF project to facilitate natural regeneration from seed source on crags - birch and rowan - potential for supplementary/enrichment

Open peatland mosaic with small groups of riparian planting along Prosen Water, alder, willows and low density scrub/heath fringe between valley side woodland higher up the slope. This dissipates into scrub/heath and blanket bog at the top of the hill.

Variable density planting of Scots pine, downy birch, rowan, aspen - approx. 1200-1600 stems/ha with 30% open space.



**Legend**

Montane heath mosaic	Proposed fences	Valley side woodland	Watercourses
Productive conifer plantation	Core Paths	Peatland habitat mosaic	Upland Flush Fen & Swamp
Low density open wooded habitat	ScotWays Rights of Way	Waders open habitat	National Nature Reserves
Ranger Access	Forest Roads	Fen, Marsh & Swamp	Montane willow scrub
NRF Fences	Riparian woodland	National Forest & Land Boundary	

**Area 3 - Kilbo**  
 Scale @ A0: 1:64,259  
 Date: 02/02/2025  
 Author: Sophie, Cade

Declaration by FLS as an Operator.  
 All timber arising from the FLS National Forests and Land represents a negligible risk under EUTR (No 995/210).

Peatland and open habitats mosaic with upland flushes and heath, potential for some scrub expansion when herbivore pressure reduces.

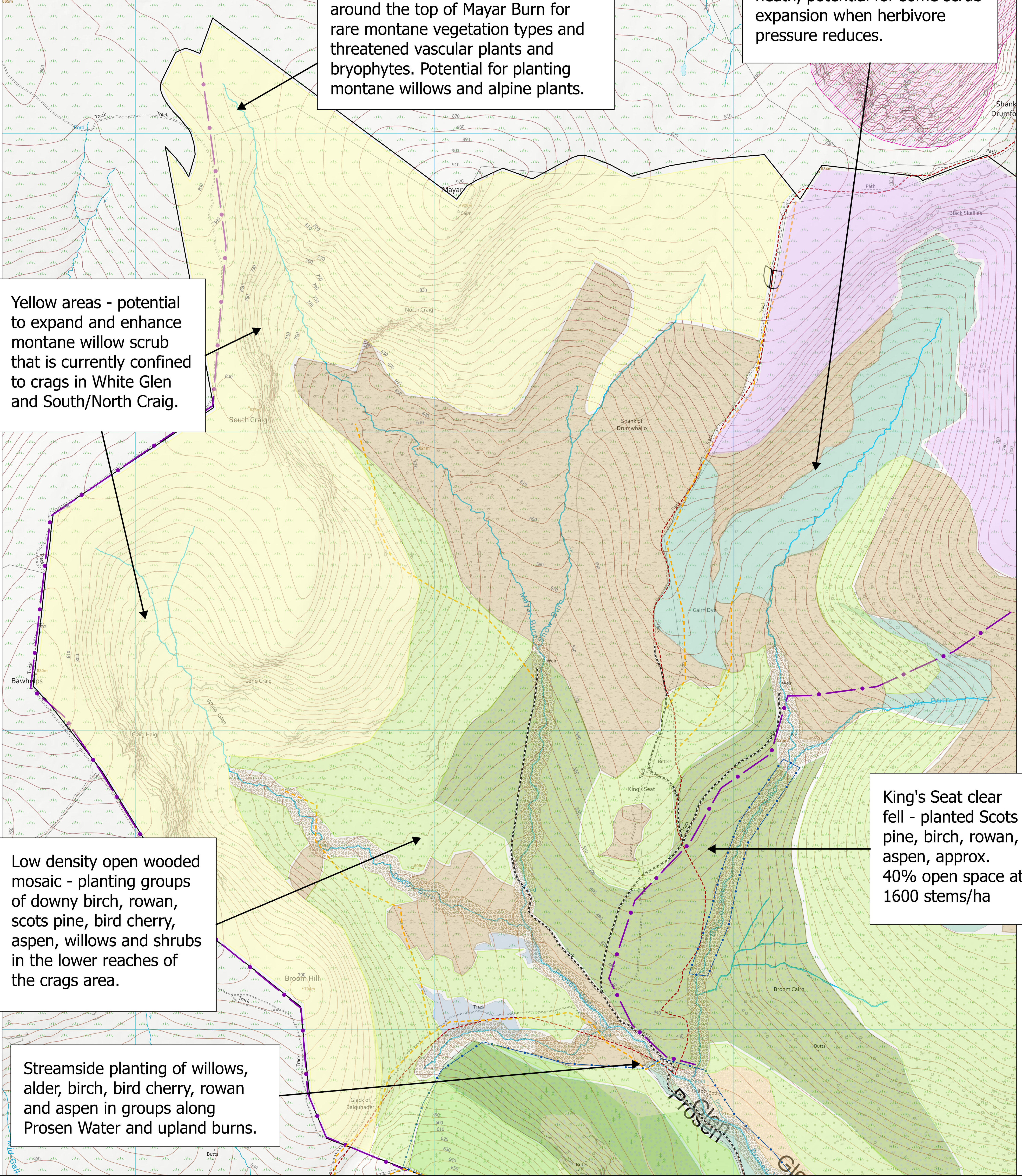
Areas of important open habitat around the top of Mayar Burn for rare montane vegetation types and threatened vascular plants and bryophytes. Potential for planting montane willows and alpine plants.

Yellow areas - potential to expand and enhance montane willow scrub that is currently confined to crags in White Glen and South/North Craig.

King's Seat clear fell - planted Scots pine, birch, rowan, aspen, approx. 40% open space at 1600 stems/ha

Low density open wooded mosaic - planting groups of downy birch, rowan, scots pine, bird cherry, aspen, willows and shrubs in the lower reaches of the crags area.

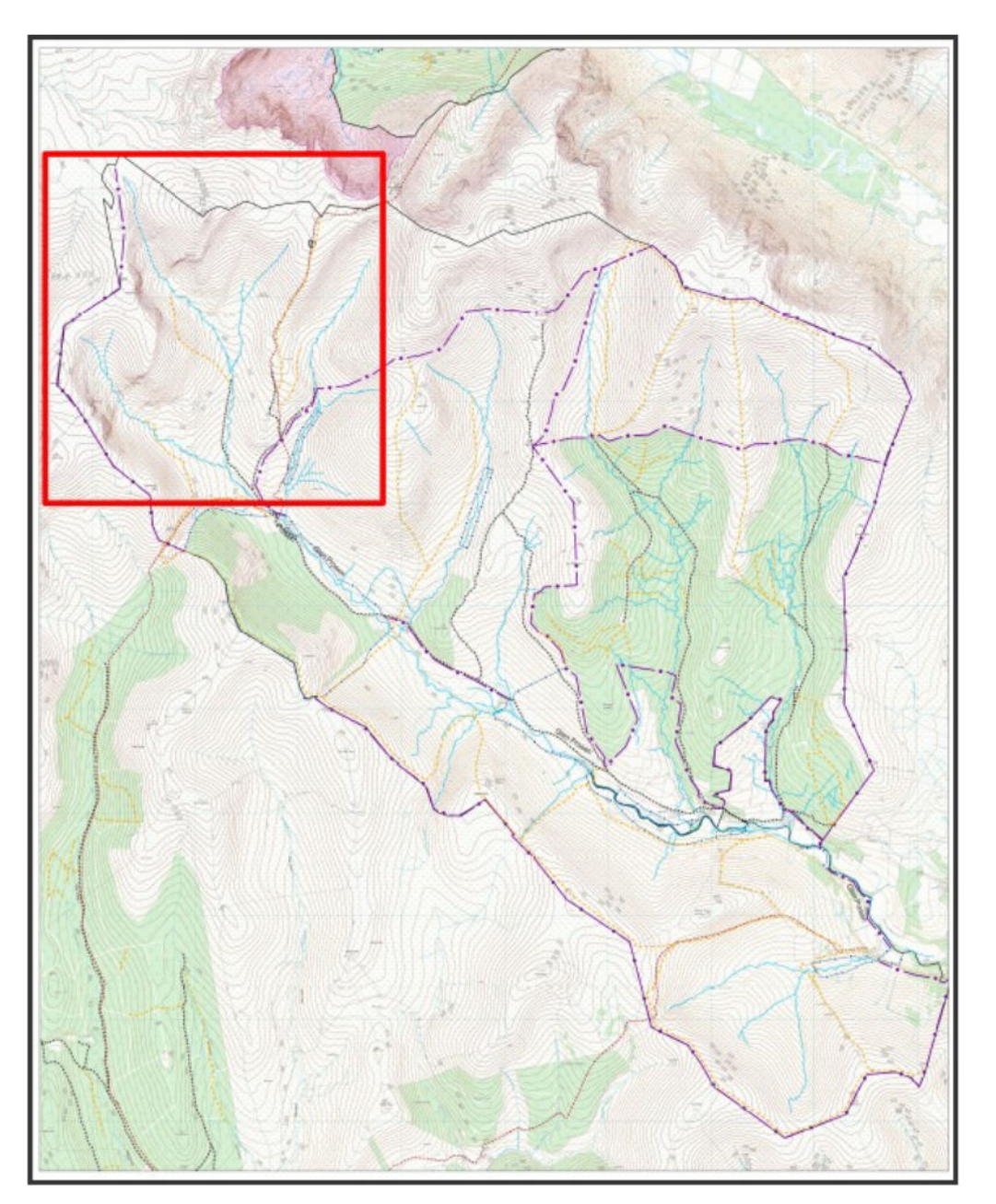
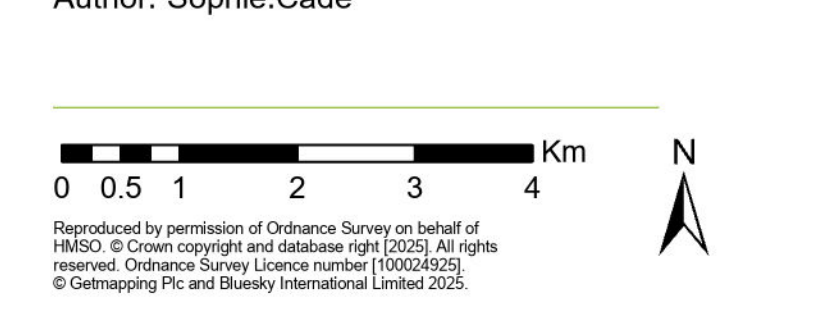
Streamside planting of willows, alder, birch, bird cherry, rowan and aspen in groups along Prosen Water and upland burns.



<ul style="list-style-type: none"> <li><span style="display: inline-block; width: 15px; height: 10px; background-color: #f0e68c; border: 1px solid black; margin-right: 5px;"></span> Montane heath mosaic</li> <li><span style="display: inline-block; width: 15px; height: 10px; background-color: #90ee90; border: 1px solid black; margin-right: 5px;"></span> Productive conifer plantation</li> <li><span style="display: inline-block; width: 15px; height: 10px; background-color: #d9ead3; border: 1px solid black; margin-right: 5px;"></span> Low density open wooded habitat</li> <li><span style="display: inline-block; width: 15px; height: 10px; border-bottom: 1px dashed orange; margin-right: 5px;"></span> Ranger Access</li> <li><span style="display: inline-block; width: 15px; height: 10px; border-bottom: 1px dashed purple; margin-right: 5px;"></span> NRF Fences</li> </ul>	<ul style="list-style-type: none"> <li><span style="display: inline-block; width: 15px; height: 10px; border-bottom: 1px solid purple; margin-right: 5px;"></span> Proposed fences</li> <li><span style="display: inline-block; width: 15px; height: 10px; border-bottom: 1px dashed purple; margin-right: 5px;"></span> Core Paths</li> <li><span style="display: inline-block; width: 15px; height: 10px; border-bottom: 1px dashed red; margin-right: 5px;"></span> ScotWays Rights of Way</li> <li><span style="display: inline-block; width: 15px; height: 10px; border-bottom: 1px dashed black; margin-right: 5px;"></span> Forest Roads</li> <li><span style="display: inline-block; width: 15px; height: 10px; border-bottom: 1px dashed brown; margin-right: 5px;"></span> Riparian woodland</li> </ul>	<p><b>Legend</b></p> <ul style="list-style-type: none"> <li><span style="display: inline-block; width: 15px; height: 10px; background-color: #90ee90; border: 1px solid black; margin-right: 5px;"></span> Valley side woodland</li> <li><span style="display: inline-block; width: 15px; height: 10px; background-color: #d9ead3; border: 1px solid black; margin-right: 5px;"></span> Peatland habitat mosaic</li> <li><span style="display: inline-block; width: 15px; height: 10px; background-color: #fce4d6; border: 1px solid black; margin-right: 5px;"></span> Waders open habitat</li> <li><span style="display: inline-block; width: 15px; height: 10px; background-color: #d9ead3; border: 1px solid black; margin-right: 5px;"></span> Fen, Marsh &amp; Swamp</li> <li><span style="display: inline-block; width: 15px; height: 10px; border: 1px solid black; margin-right: 5px;"></span> National Forest &amp; Land Boundary</li> </ul>	<ul style="list-style-type: none"> <li><span style="display: inline-block; width: 15px; height: 10px; border-bottom: 1px solid blue; margin-right: 5px;"></span> Watercourses</li> <li><span style="display: inline-block; width: 15px; height: 10px; background-color: #d9ead3; border: 1px solid black; margin-right: 5px;"></span> Upland Flush Fen &amp; Swamp</li> <li><span style="display: inline-block; width: 15px; height: 10px; background-color: #f0e68c; border: 1px solid black; margin-right: 5px;"></span> National Nature Reserves</li> <li><span style="display: inline-block; width: 15px; height: 10px; background-color: #fff2cc; border: 1px solid black; margin-right: 5px;"></span> Montane willow scrub</li> </ul>
--	---	--	---

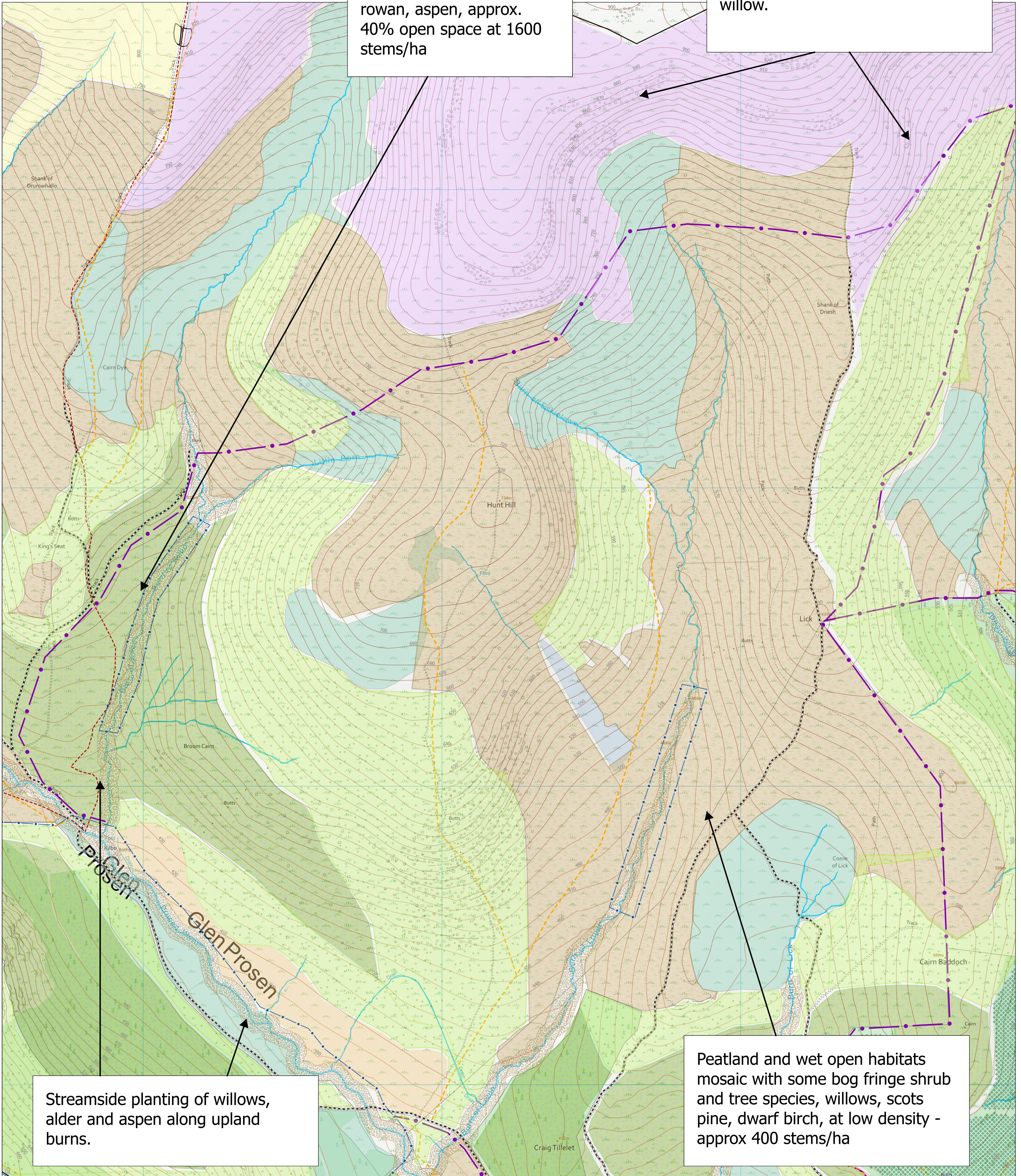
**Area 4 - Crags**  
 Scale @ A0: 1:64,259  
 Date: 02/02/2025  
 Author: Sophie.Cade

Declaration by FLS as an Operator.  
 All timber arising from the FLS National Forests and Land represents a negligible risk under EUTR (No 995/210).



King's Seat clear fell -  
planted Scots pine, birch,  
rowan, aspen, approx.  
40% open space at 1600  
stems/ha

Upland heath mosaic including  
some scrub/shrub species such as  
dwarf birch, scots pine, least  
willow.



Streamside planting of willows,  
alder and aspen along upland  
burns.

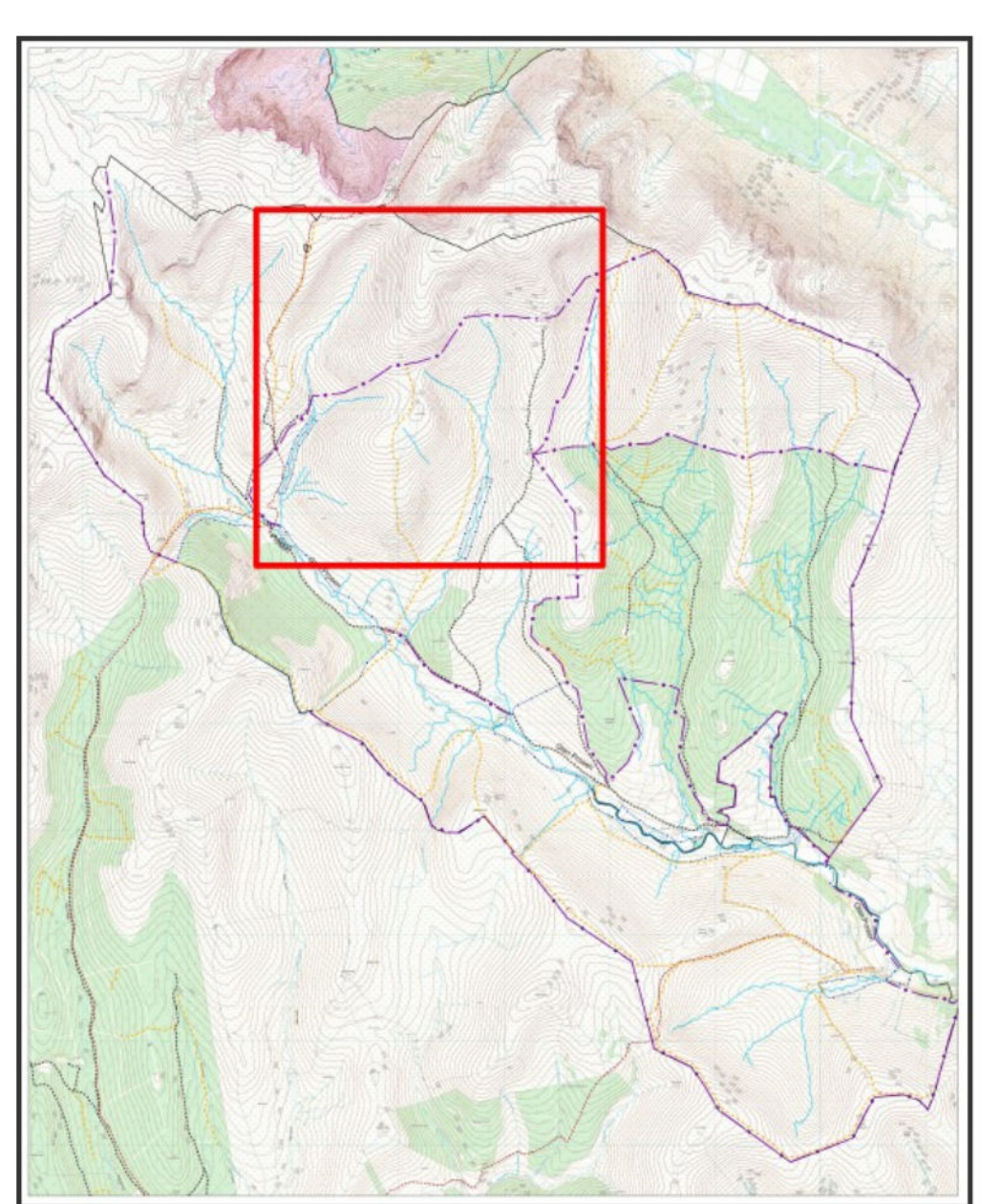
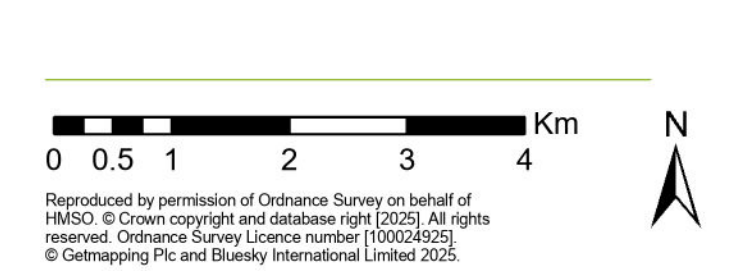
Peatland and wet open habitats  
mosaic with some bog fringe shrub  
and tree species, willows, scots  
pine, dwarf birch, at low density -  
approx 400 stems/ha

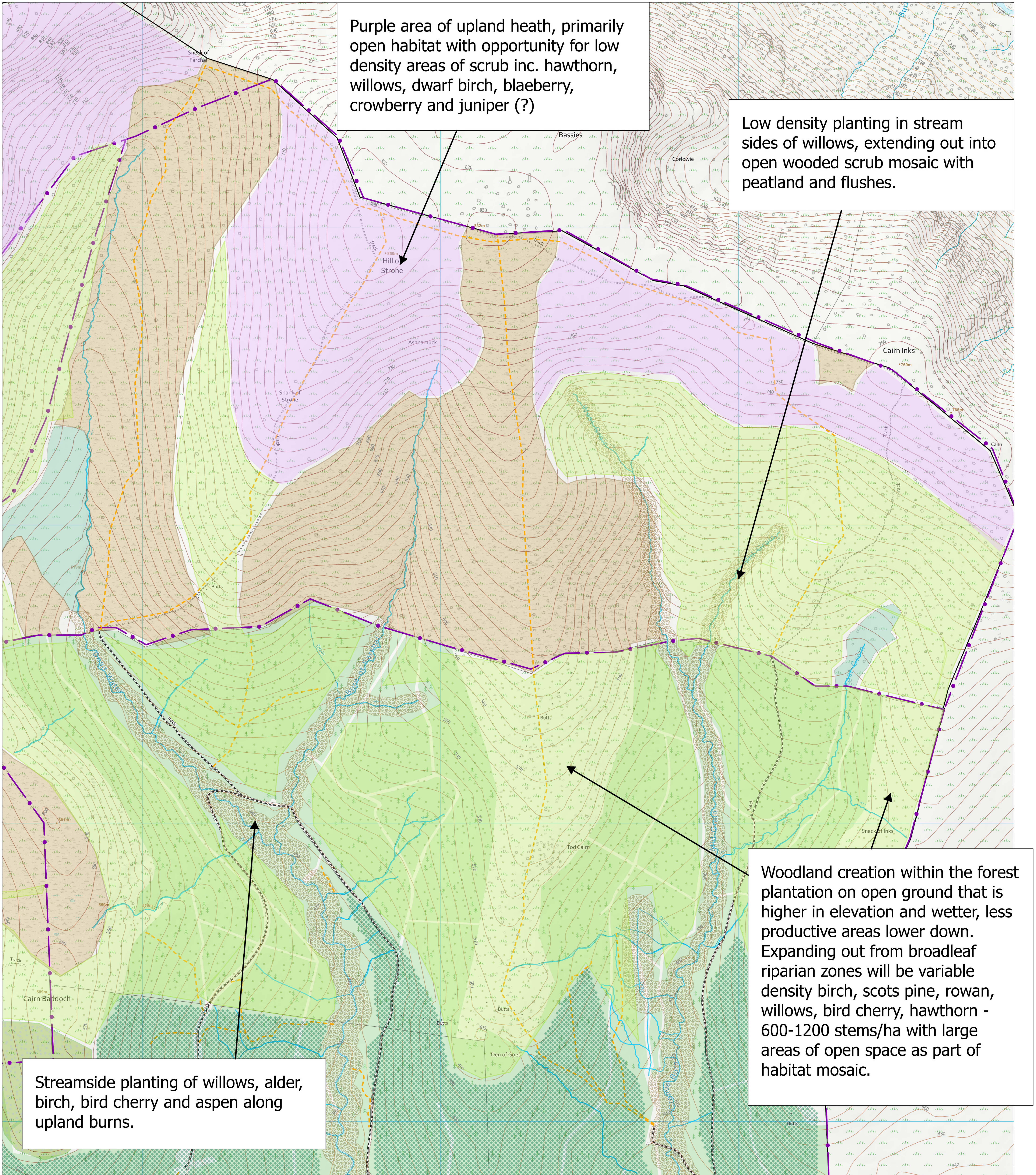
**Legend**

Montane heath mosaic	Proposed fences	Valley side woodland	Watercourses
Productive conifer plantation	Core Paths	Peatland habitat mosaic	Upland Flush Fen & Swamp
Low density open wooded habitat	ScotWays Rights of Way	Waders open habitat	National Nature Reserves
Ranger Access	Forest Roads	Fen, Marsh & Swamp	Montane willow scrub
NRF Fences	Riparian woodland	National Forest & Land Boundary	

**Area 5 - Hunt Hill**  
Scale @ A0: 1:64,259  
Date: 02/02/2025  
Author: Sophie.Cade

Declaration by FLS as an Operator.  
All timber arising from the FLS National Forests and  
Land represents a negligible risk under EUTR (No 995/210).





Purple area of upland heath, primarily open habitat with opportunity for low density areas of scrub inc. hawthorn, willows, dwarf birch, blaeberry, crowberry and juniper (?)

Low density planting in stream sides of willows, extending out into open wooded scrub mosaic with peatland and flushes.

Woodland creation within the forest plantation on open ground that is higher in elevation and wetter, less productive areas lower down. Expanding out from broadleaf riparian zones will be variable density birch, scots pine, rowan, willows, bird cherry, hawthorn - 600-1200 stems/ha with large areas of open space as part of habitat mosaic.

Streamside planting of willows, alder, birch, bird cherry and aspen along upland burns.

Legend			
Montane heath mosaic	Core Paths	Peatland habitat mosaic	Upland Flush Fen & Swamp
Productive conifer plantation	ScotWays Rights of Way	Waders open habitat	National Nature Reserves
Low density open wooded habitat	Forest Roads	Fen, Marsh & Swamp	Montane willow scrub
NRF Fences	Riparian woodland	National Forest & Land Boundary	
Proposed fences	Valley side woodland	Watercourses	

**Area 6 - Hill of Strone**  
 Scale @ A0: 1:64,259  
 Date: 02/02/2025  
 Author: Sophie Cade

Declaration by FLS as an Operator.  
 All timber arising from the FLS National Forests and Land represents a negligible risk under EUTR (No 995/210).

