



Limerigg Forests Climate

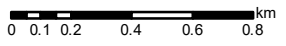
Author: Sandy Davidson

Scale @ A3: 1:25,000

Date: 13/01/2022

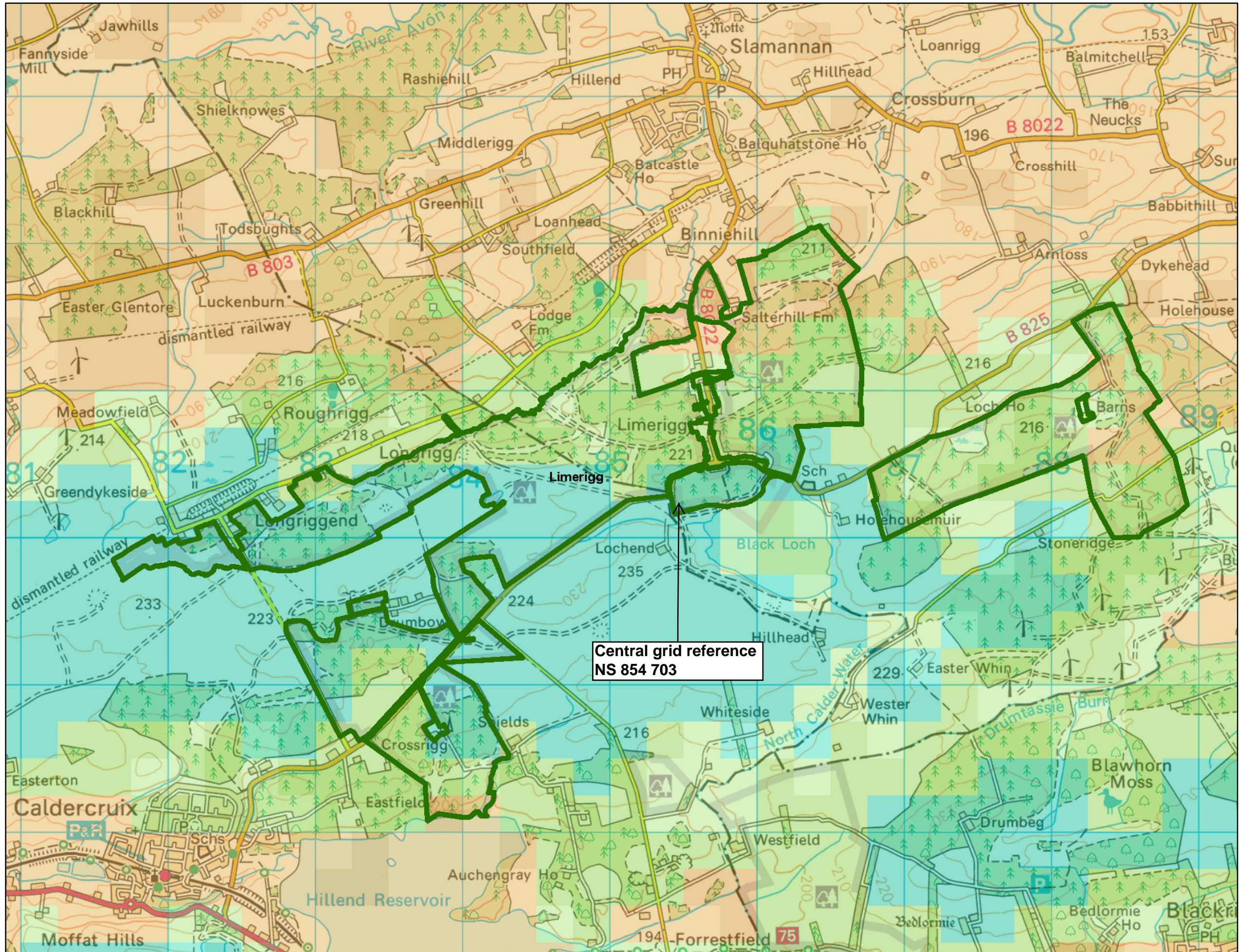
Legend

- Blocks
- Climate Model (GB)**
- Cool, Moist, Highly Exposed
- Cool, Moist, Moderately Exposed
- Cool, Moist, Severely Exposed
- Cool, Moist, Sheltered
- Cool, Moist, Too Exposed for Forestry
- Cool, Wet, Highly Exposed
- Cool, Wet, Moderately Exposed
- Cool, Wet, Severely Exposed
- Cool, Wet, Sheltered
- Cool, Wet, Too Exposed for Forestry
- Sub Alpine, Dry, Moderately Exposed
- Sub Alpine, Dry, Sheltered
- Sub Alpine, Moist, Highly Exposed
- Sub Alpine, Moist, Moderately Exposed
- Sub Alpine, Moist, Severely Exposed
- Sub Alpine, Moist, Sheltered
- Sub Alpine, Moist, Too Exposed for Forestry
- Sub Alpine, Wet, Highly Exposed
- Sub Alpine, Wet, Moderately Exposed
- Sub Alpine, Wet, Severely Exposed
- Sub Alpine, Wet, Sheltered
- Sub Alpine, Wet, Too Exposed for Forestry
- Warm, Dry, Highly Exposed
- Warm, Dry, Moderately Exposed
- Warm, Dry, Sheltered
- Warm, Moist, Highly Exposed
- Warm, Moist, Moderately Exposed
- Warm, Moist, Severely Exposed
- Warm, Moist, Sheltered
- Warm, Moist, Too Exposed for Forestry
- Warm, Wet, Highly Exposed
- Warm, Wet, Moderately Exposed
- Warm, Wet, Severely Exposed
- Warm, Wet, Sheltered
- Warm, Wet, Too Exposed for Forestry



Reproduced by permission of Ordnance Survey on behalf of HMSO. © Crown copyright and database right 2022. All rights reserved. Ordnance Survey Licence number 100024925. © Getmapping Plc and Bluesky International Limited 2022.

Scotland's national forests and land are responsibly managed to the UK Woodland Assurance Standard.



Central grid reference NS 854 703