

Future Habitats and Species

Scale @ A3: 1:25,000
Date: 02/07/2025

Legend

- 

Restocking in Plan Period
- Restock Species**
- 

Birch
- 

Douglas Fir
- 

Native Mixed Broadleaves
- 

Norway Spruce
- 

Oak
- 

Other/Mixed Broadleaves
- 

Other/Mixed Conifers
- 

Scots Pine
- 

Sitka Spruce
- 

Birch with any Other Broadleaves
- 

Birch with Other Conifers
- 

Birch with Sitka Spruce
- 

Douglas Fir with any Other Broadleaves
- 

Douglas Fir with any Other Conifers
- 

Norway Spruce with any Other Broadleaves
- 

Norway Spruce with Sitka Spruce
- 

Oak with Birch
- 

Oak with any Other Broadleaves
- 

Other Broadleaves with Birch
- 

Scots Pine with Birch
- 

Sitka Spruce with Birch
- 

Sitka Spruce with Douglas Fir
- 

Sitka Spruce with Lodgepole Pine
- 

Sitka Spruce with any Other Broadleaves
- 

Sitka Spruce with Scots Pine
- 

Open
- 

Watercourses
- Forest Roads**
- Road Classification**
- 

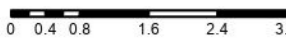
Unclassified
- 


A
- 

B
- 

C
- 

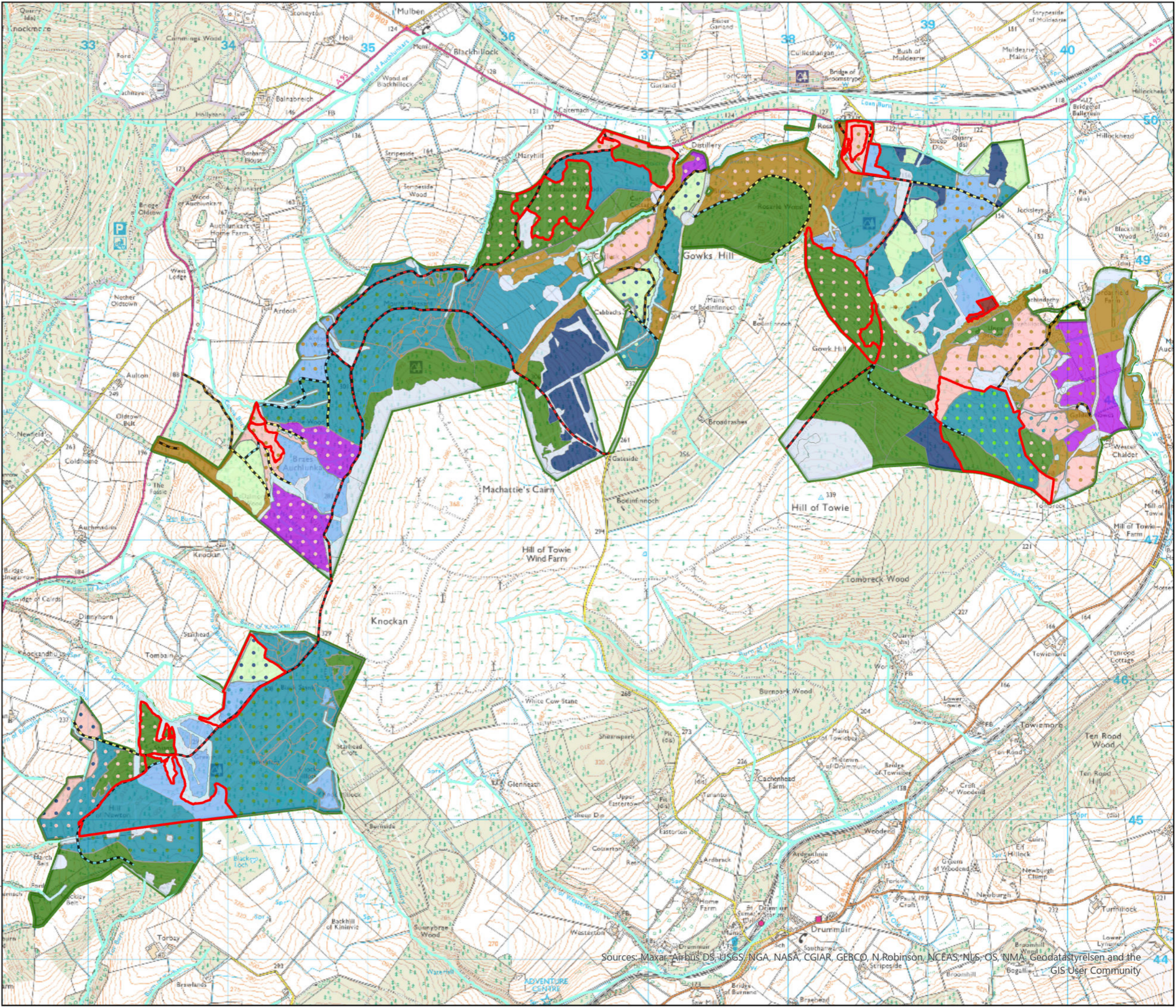
LMP Area

 0 0.4 0.8 1.6 2.4 3.2 Km

 N

Reproduced by permission of Ordnance Survey on behalf of HMSO.
© Crown copyright and database right [2025]. All rights reserved.
Ordnance Survey Licence number AC0000820350.
© Getmapping Plc and Bluesky International Limited 2025.

Declaration by FLS as an Operator.
All timber arising from the FLS National Forests and Land represents a negligible risk under EUTR (No 995/210).



Sources: Maxar, Airbus DS, USGS, NGA, NASA, CGIAR, GERCO, N Robinson, NCEAS, NIS, OS, NMA, Geodatastyrelsen and the GIS User Community