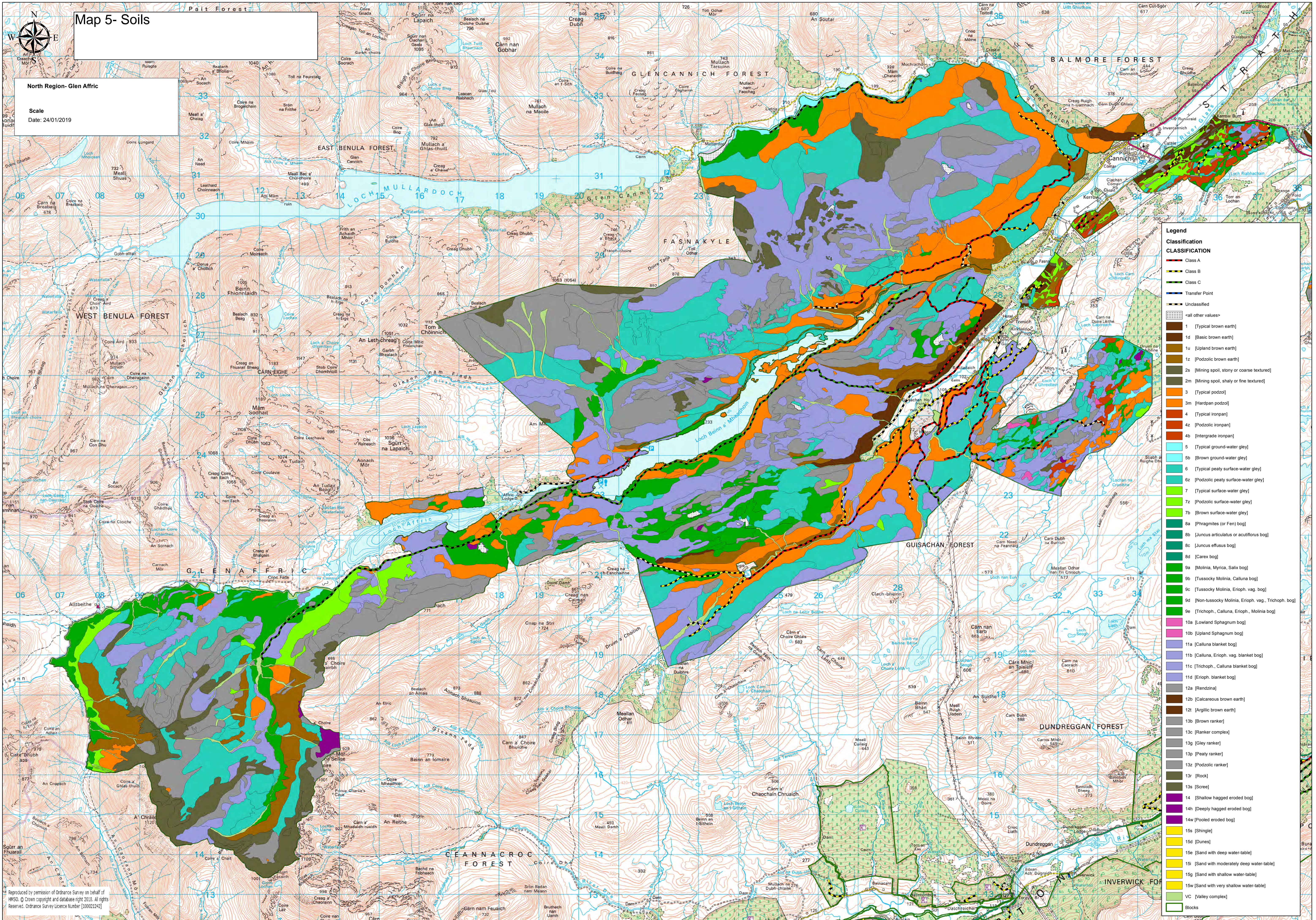


Map 5- Soils

North Region- Glen Affric

Scale
Date: 24/01/2019



Legend

Classification

- Class A
- Class B
- Class C
- Transfer Point
- Unclassified
- <all other values>

1	[Typical brown earth]
1d	[Basic brown earth]
1u	[Upland brown earth]
1z	[Podzolic brown earth]
2s	[Mining spoil, stony or coarse textured]
2m	[Mining spoil, shaly or fine textured]
3	[Typical podzol]
3m	[Hardpan podzol]
4	[Typical ironpan]
4z	[Podzolic ironpan]
4b	[Intergrade ironpan]
5	[Typical ground-water gley]
5b	[Brown ground-water gley]
6	[Typical peaty surface-water gley]
6z	[Podzolic peaty surface-water gley]
7	[Typical surface-water gley]
7z	[Podzolic surface-water gley]
7b	[Brown surface-water gley]
8a	[Phragmites (or Fen) bog]
8b	[Juncus articulatus or acutiflorus bog]
8c	[Juncus effusus bog]
8d	[Carex bog]
9a	[Molinia, Myrica, Salix bog]
9b	[Tussocky Molinia, Calluna bog]
9c	[Tussocky Molinia, Erioph. vag. bog]
9d	[Non-tussocky Molinia, Erioph. vag., Trichoph. bog]
9e	[Trichoph., Calluna, Erioph., Molinia bog]
10a	[Lowland Sphagnum bog]
10b	[Upland Sphagnum bog]
11a	[Calluna blanket bog]
11b	[Calluna, Erioph. vag. blanket bog]
11c	[Trichoph., Calluna blanket bog]
11d	[Erioph. blanket bog]
12a	[Rendzina]
12b	[Calcareous brown earth]
12c	[Argillic brown earth]
13b	[Brown ranker]
13c	[Ranker complex]
13g	[Gley ranker]
13p	[Peaty ranker]
13z	[Podzolic ranker]
13r	[Rock]
13s	[Scree]
14	[Shallow hagged eroded bog]
14h	[Deeply hagged eroded bog]
14w	[Poored eroded bog]
15e	[Shingle]
15d	[Dunes]
15i	[Sand with deep water-table]
15j	[Sand with moderately deep water-table]
15g	[Sand with shallow water-table]
15w	[Sand with very shallow water-table]
VC	[Valley complex]
Blocks	

Reproduced by permission of Ordnance Survey on behalf of HMSO. © Crown copyright and Database right 2015. All rights Reserved. Ordnance Survey Licence Number [1000212142]