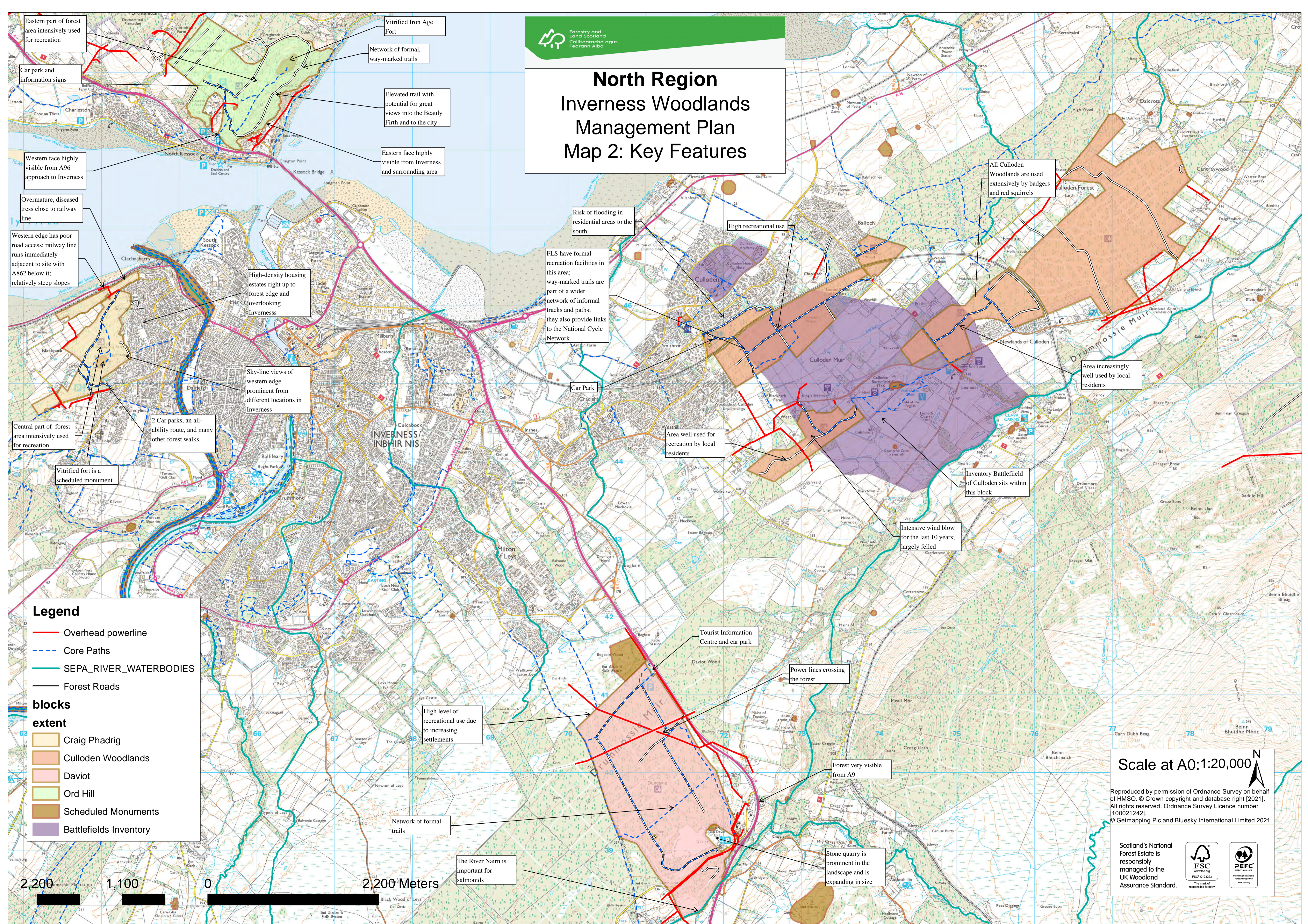


North Region Inverness Woodlands Management Plan Map 2: Key Features



Eastern part of forest area intensively used for recreation

Car park and information signs

Vitrified Iron Age Fort

Network of formal, way-marked trails

Elevated trail with potential for great views into the Beauly Firth and to the city

Eastern face highly visible from Inverness and surrounding area

Western face highly visible from A96 approach to Inverness

Overmature, diseased tress close to railway line

Western edge has poor road access; railway line runs immediately adjacent to site with A862 below it; relatively steep slopes

High-density housing estates right up to forest edge and overlooking Inverness

Sky-line views of western edge prominent from different locations in Inverness

Central part of forest area intensively used for recreation

2 Car parks, an all-ability route, and many other forest walks

Vitrified fort is a scheduled monument

Risk of flooding in residential areas to the south

High recreational use

FLS have formal recreation facilities in this area; way-marked trails are part of a wider network of informal tracks and paths; they also provide links to the National Cycle Network

Car Park

Area well used for recreation by local residents

Inventory Battlefield of Culloden sits within this block

Intensive wind blow for the last 10 years; largely felled

All Culloden Woodlands are used extensively by badgers and red squirrels

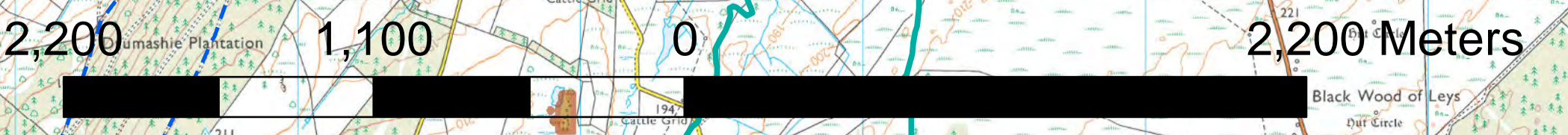
Area increasingly well used by local residents

Legend

- Overhead powerline
- Core Paths
- SEPA_RIVER_WATERBODIES
- Forest Roads

blocks extent

- Craig Phadrig
- Culloden Woodlands
- Daviot
- Ord Hill
- Scheduled Monuments
- Battlefields Inventory



Scale at A0:1:20,000

Reproduced by permission of Ordnance Survey on behalf of HMSO. © Crown copyright and database right [2021]. All rights reserved. Ordnance Survey Licence number [100021242]. © Getmapping Plc and Bluesky International Limited 2021.

Scotland's National Forest Estate is responsibly managed to the UK Woodland Assurance Standard.