



Glen Doll Soils Map

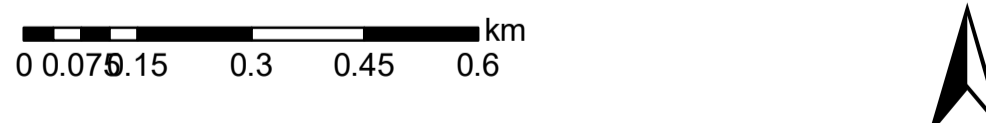
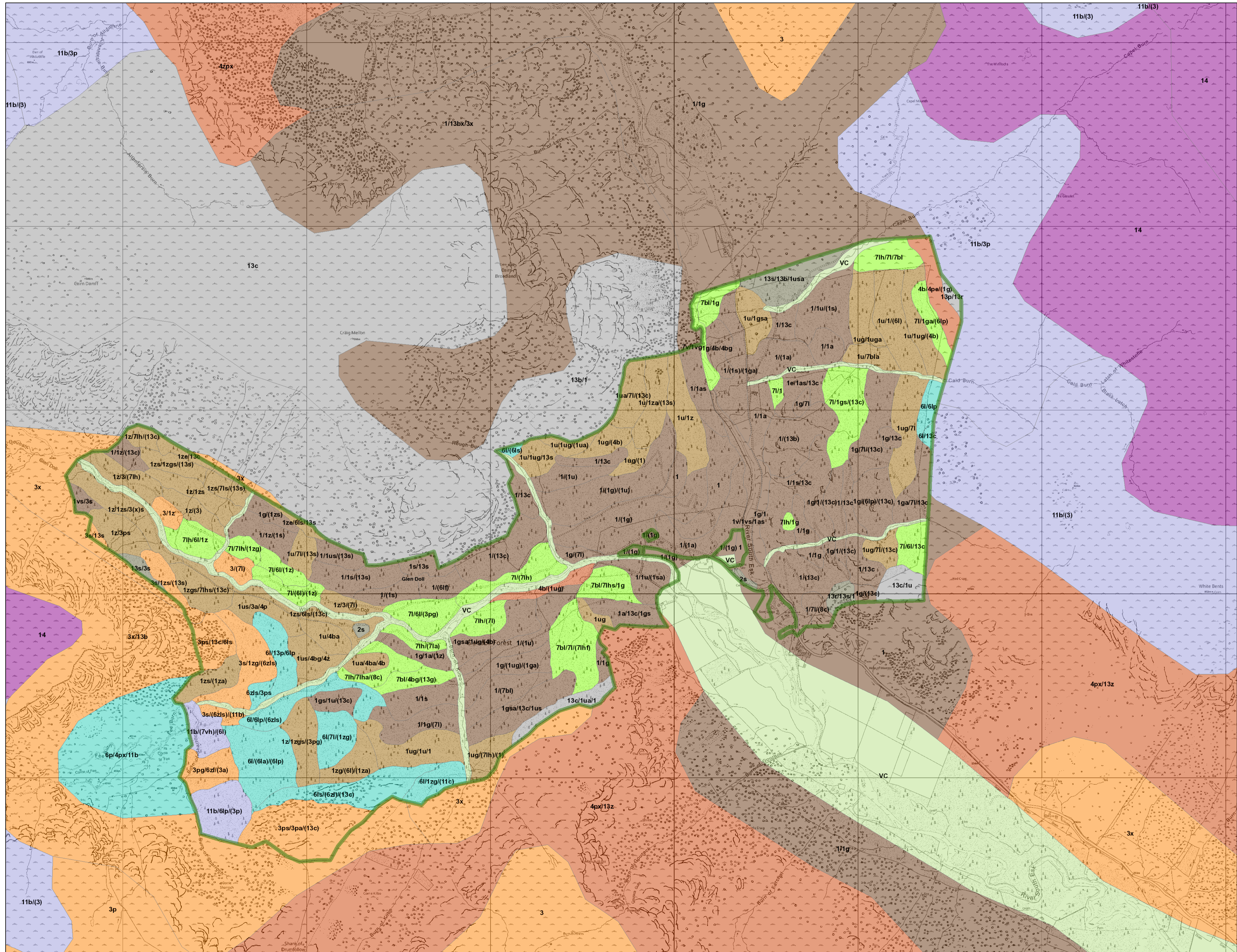
Author: Sophie Cade

Scale @ A1: 1:10,000

Date: 21/01/2024

Legend

- Blocks**
- Blocks
- Soils Polygons**
- Not Surveyed
 - 1 [Typical Brown Earth]
 - 14 [Basic Brown Earth]
 - 10 [Upland Brown Earth]
 - 12 [Podzolic Brown Earth]
 - 2s [Mining Spoil, Stony or Coarse Textured]
 - 2m [Mining Spoil, Shaly or Fine Textured]
 - 3 [Typical Podzol]
 - 3m [Hardpan Podzol]
 - 4 [Typical Ironpan Soil]
 - 4z [Podzolic Ironpan Soil]
 - 4b [Intergrade Ironpan Soil]
 - 5 [Typical Ground-Water Gley]
 - 5b [Brown Ground-Water Gley]
 - 6 [Typical Peaty Surface-Water Gley]
 - 6z [Podzolic Peaty Surface-Water Gley]
 - 7 [Typical Surface-Water Gley]
 - 7z [Podzolic Surface-Water Gley]
 - 7b [Brown Surface-Water Gley]
 - 14w [Pooled Eroded Bog]
 - 8a [Phragmites (or Fen) Bog]
 - 8b [Juncus articulatus or acutiflorus Bog]
 - 8c [Juncus effusus Bog]
 - 8d [Carex Bog]
 - 9a [Molinia, Myrica, Salix Bog]
 - 9b [Tussocky Molinia Bog, Molinia, Calluna Bog]
 - 9c [Tussocky Molinia, Eriophorum vaginatum Bog]
 - 9d [Non-Tussocky Molinia, Eriophorum vaginatum, Trichophorum Bog]
 - 9e [Trichophorum, Calluna, Eriophorum, Molinia Bog (Weakly Flushed)]
 - 10a [Lowland Sphagnum Bog]
 - 10b [Upland Sphagnum Bog]
 - 11a [Calluna Blanket Bog]
 - 11b [Calluna, Eriophorum vaginatum Blanket Bog]
 - 11c [Trichophorum, Calluna Blanket Bog]
 - 11d [Eriophorum Blanket Bog]
 - 12a [Rendzina]
 - 12b [Calcareous Brown Soil]
 - 12l [Argillic Brown Earth]
 - 13b [Brown Ranker]
 - 13g [Gley Ranker]
 - 13p [Peaty Ranker]
 - 13z [Podzolic Ranker]
 - 13r [Rock]
 - 13s [Scree]
 - 13c [Ranker Complex]
 - 14 [Shallow Haggd Eroded Bog]
 - 14h [Deeply Haggd Eroded Bog]
 - 14w [Pooled Eroded Bog]
 - 15s [Shingle]
 - 15d [Dunes]
 - 15e [Sand with Deep Water-Table (or Excessively Drained Sand)]
 - 15i [Sand with Moderately Deep Water-Table]
 - 15g [Sand with Shallow Water-Table]
 - 15w [Sand with Very Shallow Water-Table]
 - VC [Valley Complex]



Reproduced by permission of Ordnance Survey on behalf of HMSO. © Crown copyright and database right 2024. All rights reserved. Ordnance Survey Licence number 100024925. © Getmapping Plc and Bluesky International Limited 2024.

