

### Current Species Map

Scale @ A3: 1:20,000

Date: 18/11/2025

#### Legend

**Current Species (largest component)**

- Lodgepole Pine
- Norway Spruce
- Scots Pine
- Sitka Spruce
- No Species
- Ash
- Beech
- Birch
- Oak
- Native Mixed/Other Broadleaves
- Other/Mixed Broadleaves
- Other/Mixed Conifers
- Douglas Fir
- Larch

**Road Classification**

- Unclassified
- A
- B
- C

0 0.075 0.15 0.3 0.45 0.6 Km



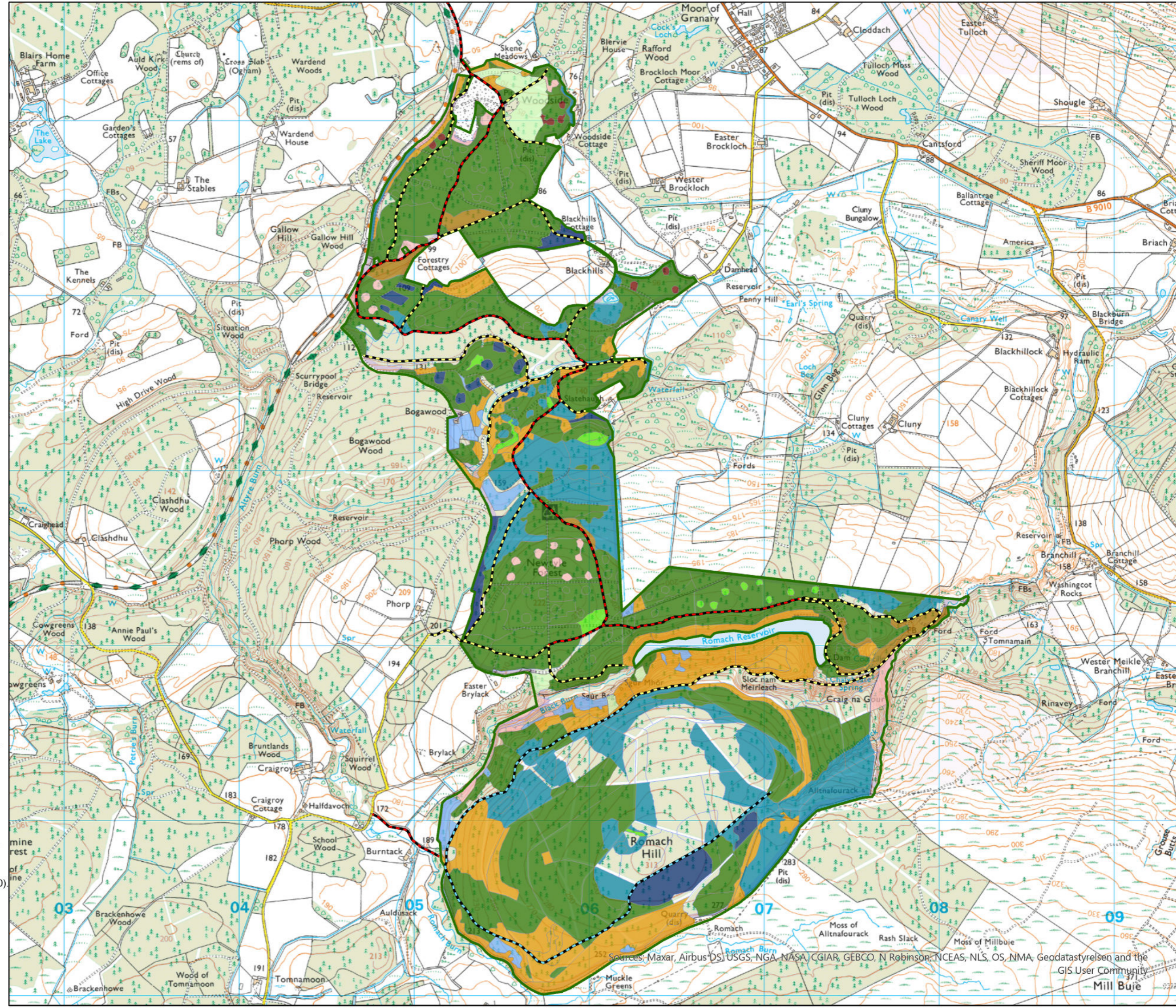
Reproduced by permission of Ordnance Survey on behalf of HMSO.  
© Crown copyright and database right [2025]. All rights reserved.  
Ordnance Survey Licence number AC0000820350.  
© Getmapping Plc and Bluesky International Limited 2025.

Declaration by FLS as an Operator.  
All timber arising from the FLS National Forests and Land represents a negligible risk under EUTR (No 995/210).

Scotland's national forests and land are responsibly managed to the UK Woodland Assurance Standard.







Sources: Maxar, Airbus DS, USGS, NGA, NASA, CGIAR, GEBCO, N Robinson, NCEAS, NLS, OS, NMA, Geodatastyrelsen and the GIS User Community  
Mill Buie