
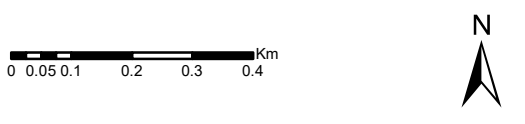


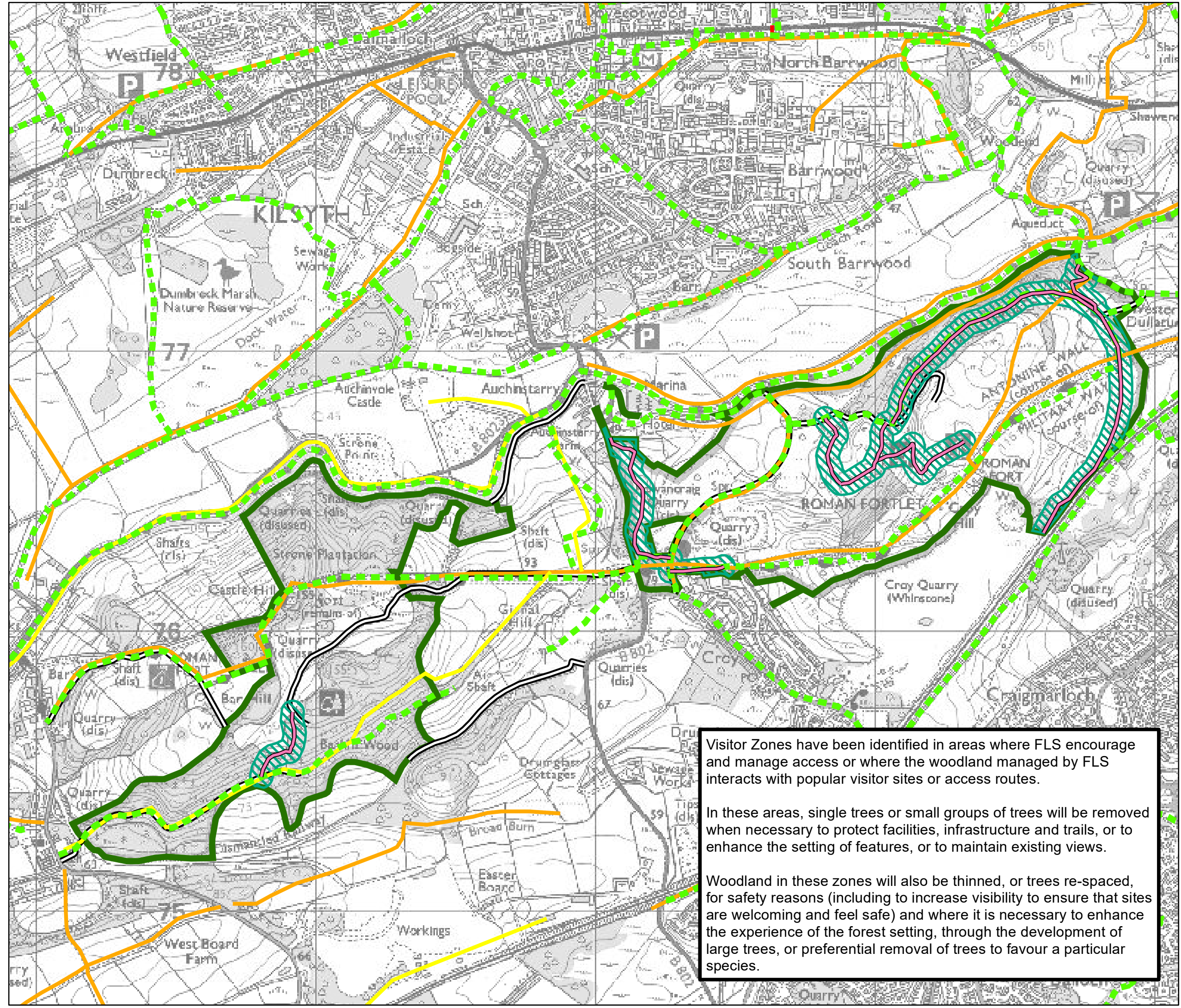
VISITOR ZONES

Author: u321351
Scale @ A3: 1:12,500
Date: 24/03/2021

- Legend**
-  Blocks
 -  Interactive zone - Buffer around trail
 -  Rec - Linear Assets
 -  Forest Roads
 -  Core Paths
 -  Asserted
 -  Claimed
 -  Other Route (Potential RoW)



Reproduced by permission of Ordnance Survey on behalf of HMSO.
© Crown copyright and database right [2021]. All rights reserved.
Ordnance Survey Licence number [100021242].
© Getmapping Plc and Bluesky International Limited 2021.



Visitor Zones have been identified in areas where FLS encourage and manage access or where the woodland managed by FLS interacts with popular visitor sites or access routes.

In these areas, single trees or small groups of trees will be removed when necessary to protect facilities, infrastructure and trails, or to enhance the setting of features, or to maintain existing views.

Woodland in these zones will also be thinned, or trees re-spaced, for safety reasons (including to increase visibility to ensure that sites are welcoming and feel safe) and where it is necessary to enhance the experience of the forest setting, through the development of large trees, or preferential removal of trees to favour a particular species.