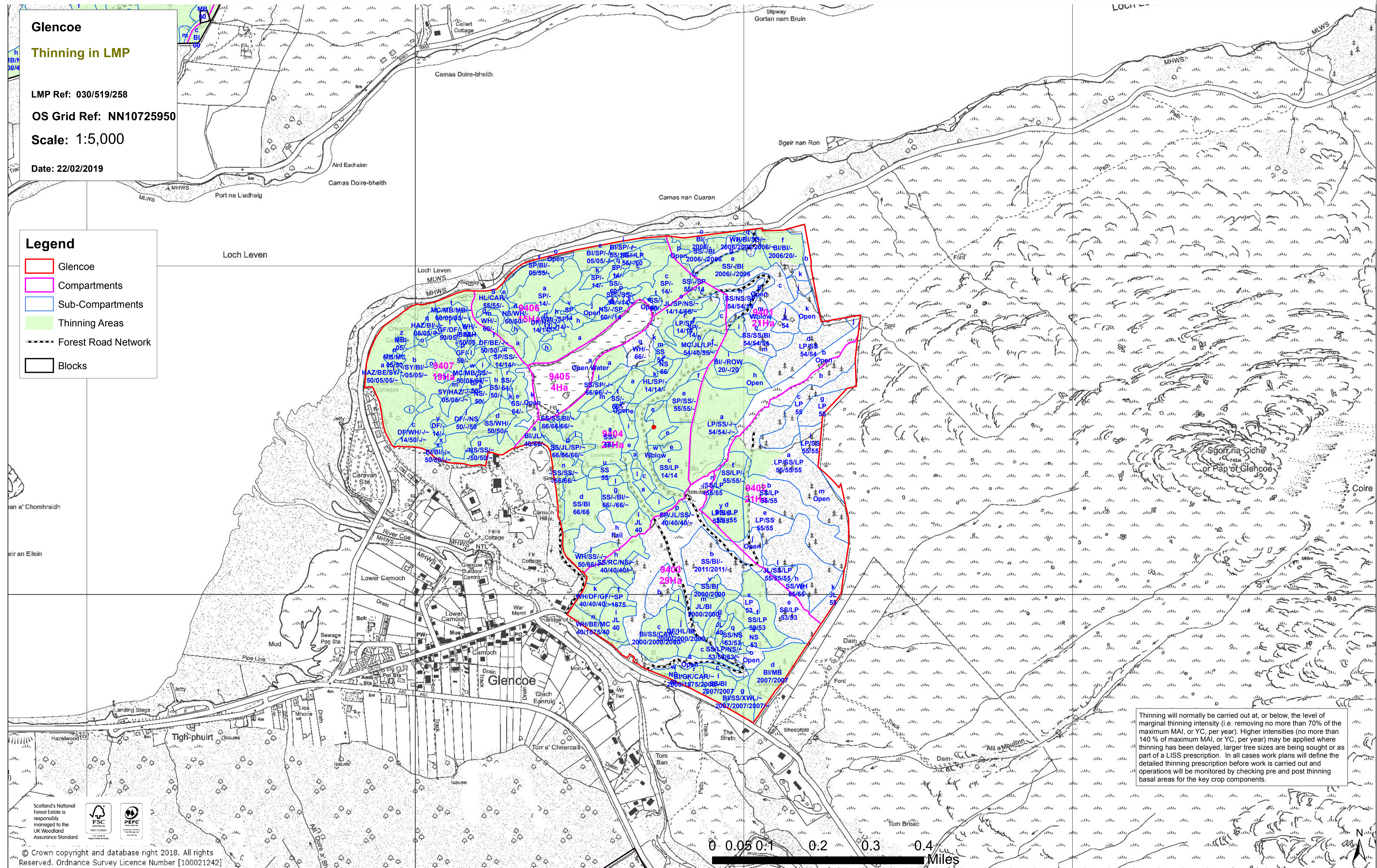


Glencoe
Thinning in LMP

LMP Ref: 030/519/258
OS Grid Ref: NN10725950
Scale: 1:5,000
Date: 22/02/2019

- Legend**
- Glencoe
 - Compartments
 - Sub-Compartments
 - Thinning Areas
 - Forest Road Network
 - Blocks



Thinning will normally be carried out at, or below, the level of marginal thinning intensity (i.e. removing no more than 70% of the maximum MAI, or YC, per year). Higher intensities (no more than 140% of maximum MAI, or YC, per year) may be applied where thinning has been delayed, larger tree sizes are being sought or as part of a LISS prescription. In all cases work plans will define the detailed thinning prescription before work is carried out and operations will be monitored by checking pre and post thinning basal areas for the key crop components.

