


### Management Map

Scale @ A3: 1:20,000

Date: 18/11/2025

#### Legend

	Felled awaiting restock		Long Term Retention (Fell after Phase 3)
	Phase 1 felling (2026-2030)		Minimum Intervention
	Phase 2 felling (2031-2035)		Low Impact Silviculture
	Phase 3 felling (2036-2040)		Open
	Phase 4 felling (2041-2045)	<b>Road Classification</b>	
	Phase 5 felling (2046-2050)		Unclassified
	Phase 6 felling (2051-2055)		A
	Phase 7 felling (2056-2060)		B
	After 2060		C
			Planned Roads
			Watercourses

0 0.075 0.15 0.3 0.45 0.6 Km

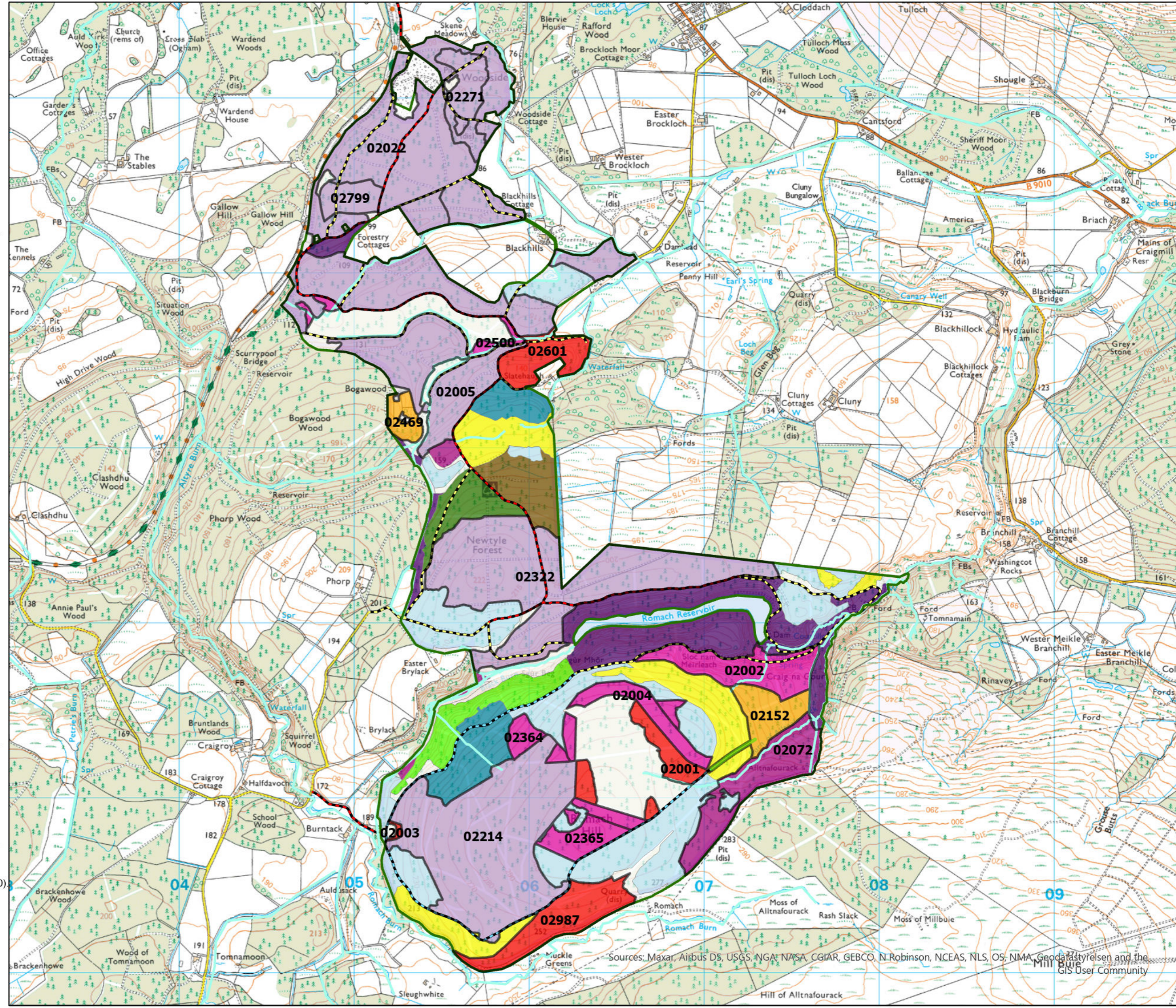


Reproduced by permission of Ordnance Survey on behalf of HMSO. © Crown copyright and database right [2025]. All rights reserved. Ordnance Survey Licence number AC0000820350. © Getmapping Plc and Bluesky International Limited 2025.

Declaration by FLS as an Operator.  
All timber arising from the FLS National Forests and Land represents a negligible risk under EUTR (No 995/210)

Scotland's national forests and land are responsibly managed to the UK Woodland Assurance Standard.





Sources: Maxar, Airbus DS, USGS, NGA, NASA, CGIAR, GEBCO, N. Robinson, NCEAS, NLS, OS, NMA, Geodatastyrelsen and the GIS User Community