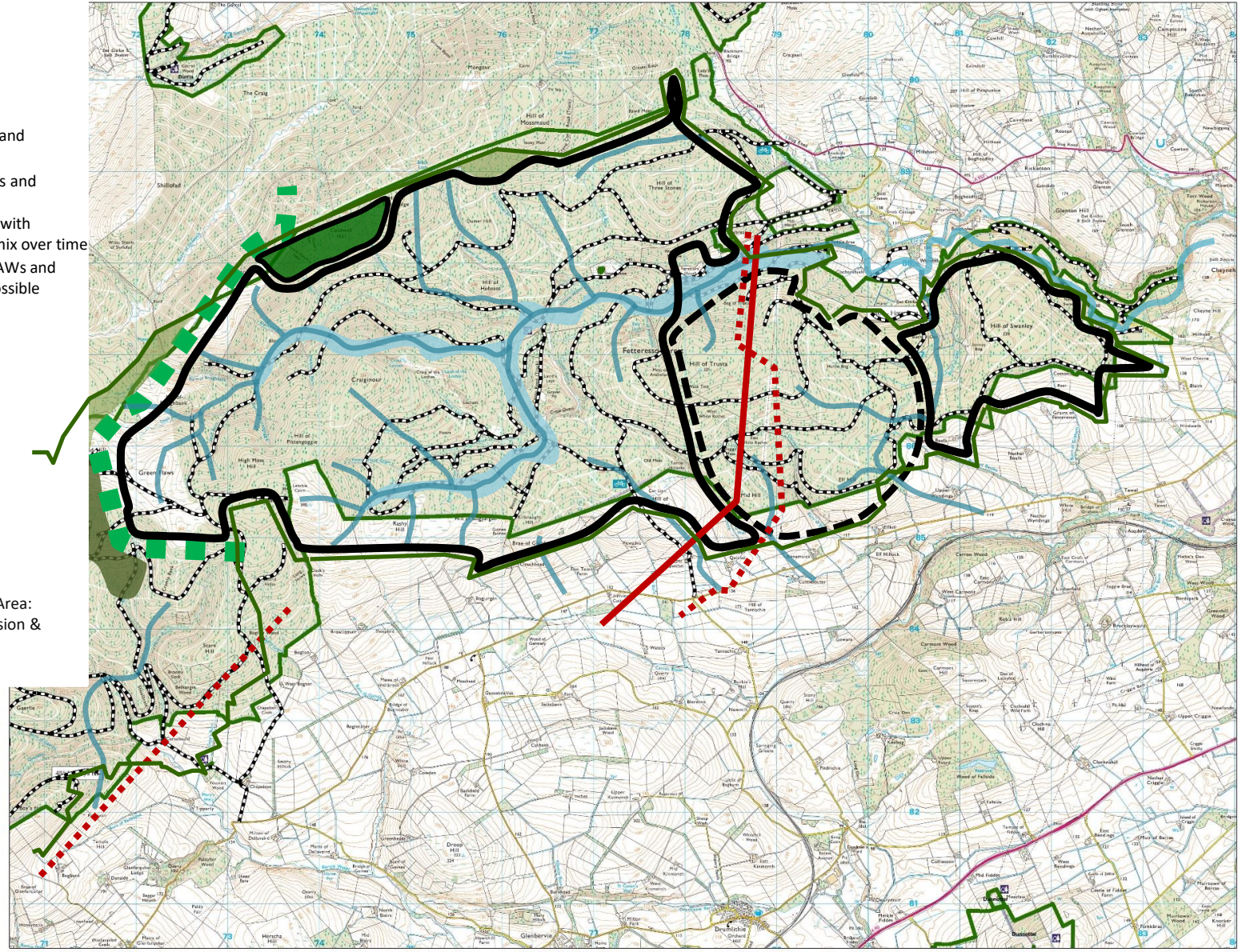




Map 4b Mearns (East): Concept 2025 - 2045

Key

- Block Boundary
- Riparian Planting
- Gas Pipelines and Wayleave
- Existing Overhead Powerlines and Wayleave
- Proposed Overhead Powerlines and Wayleave
- Productive commercial forest with potential to diversify conifer mix over time
- Gradual Transition towards PAWs and retain large conifers where possible
- Proposed broadleaf
- Transition to broadleaf and open land over time
- Open Habitat
- Open Habitat with Windfarm
- Broadleaf area
- Utilities expansion area
- Conifer/Broadleaf Mix
- Potential Biodiversity Project Area: Cowie Water - Riparian expansion & broadleaves



Reproduced by permission of Ordnance Survey on behalf of HMSO.
© Crown copyright and database right 2025. All rights reserved.
Ordnance Survey Licence number 100024625.
© Getmapping Plc and Bluesky International Limited 2025.

Scotland's national
forests and land
are responsibly
managed to the
UK Woodland
Assurance Standard.

