

Future Species Map

Scale @ A3: 1:20,000

Date: 18/11/2025

Legend

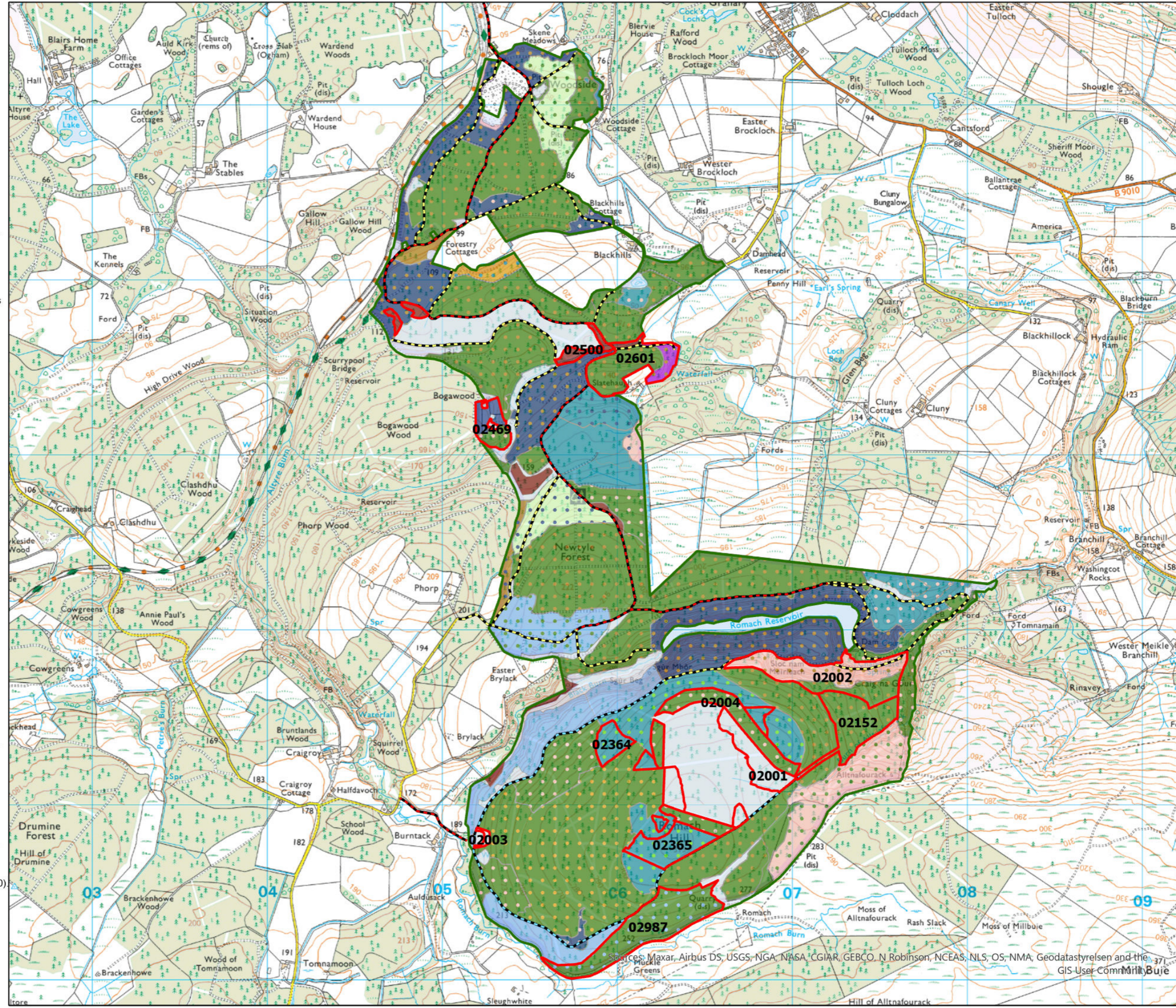
- | | | | |
|--|---|--|---|
| | Birch | | Other Conifers with Birch |
| | Native Mixed Broadleaves | | Other Conifers with any Other Broadleaves |
| | Norway Spruce | | Scots Pine with Birch |
| | Other/Mixed Broadleaves | | Scots Pine with Larch |
| | Other/Mixed Conifers | | Scots Pine with Norway Spruce |
| | Scots Pine | | Scots Pine with any Other Broadleaves |
| | Sitka Spruce | | Sitka Spruce with Birch |
| | Birch with any Other Broadleaves | | Sitka Spruce with Lodgepole Pine |
| | Birch with Other Conifers | | Sitka Spruce with any Other Broadleaves |
| | Birch with Scots Pine | | Sitka Spruce with any Other Conifers |
| | Douglas Fir with any Other Conifers | | Open |
| | Douglas Fir with Scots Pine | | |
| | Larch with Sitka Spruce | | Unclassified |
| | Norway Spruce with Scots Pine | | A |
| | Oak with any Other Broadleaves | | B |
| | Other Broadleaves with any Other Conifers | | C |

0 0.075 0.15 0.3 0.45 0.6 Km



Reproduced by permission of Ordnance Survey on behalf of HMSO. © Crown copyright and database right [2025]. All rights reserved. Ordnance Survey Licence number AC0000820350. © Getmapping Plc and Bluesky International Limited 2025.

Declaration by FLS as an Operator. All timber arising from the FLS National Forests and Land represents a negligible risk under EUTR (No 995/210).



Sources: Maxar, Airbus DS, USGS, NGA, NASA, CGIAR, GEBCO, N Robinson, NCEAS, NLS, OS, NMA, Geodatastyrelsen and the GIS User Community