

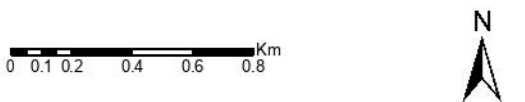


**M17: Selective Felling (Forest Habitat Network)**

Author: FLS Planning  
 Scale @ A3: 1:25,000  
 Date: 6/9/2026

**Legend**

-  LMP Boundary
-  Forest Habitat Network

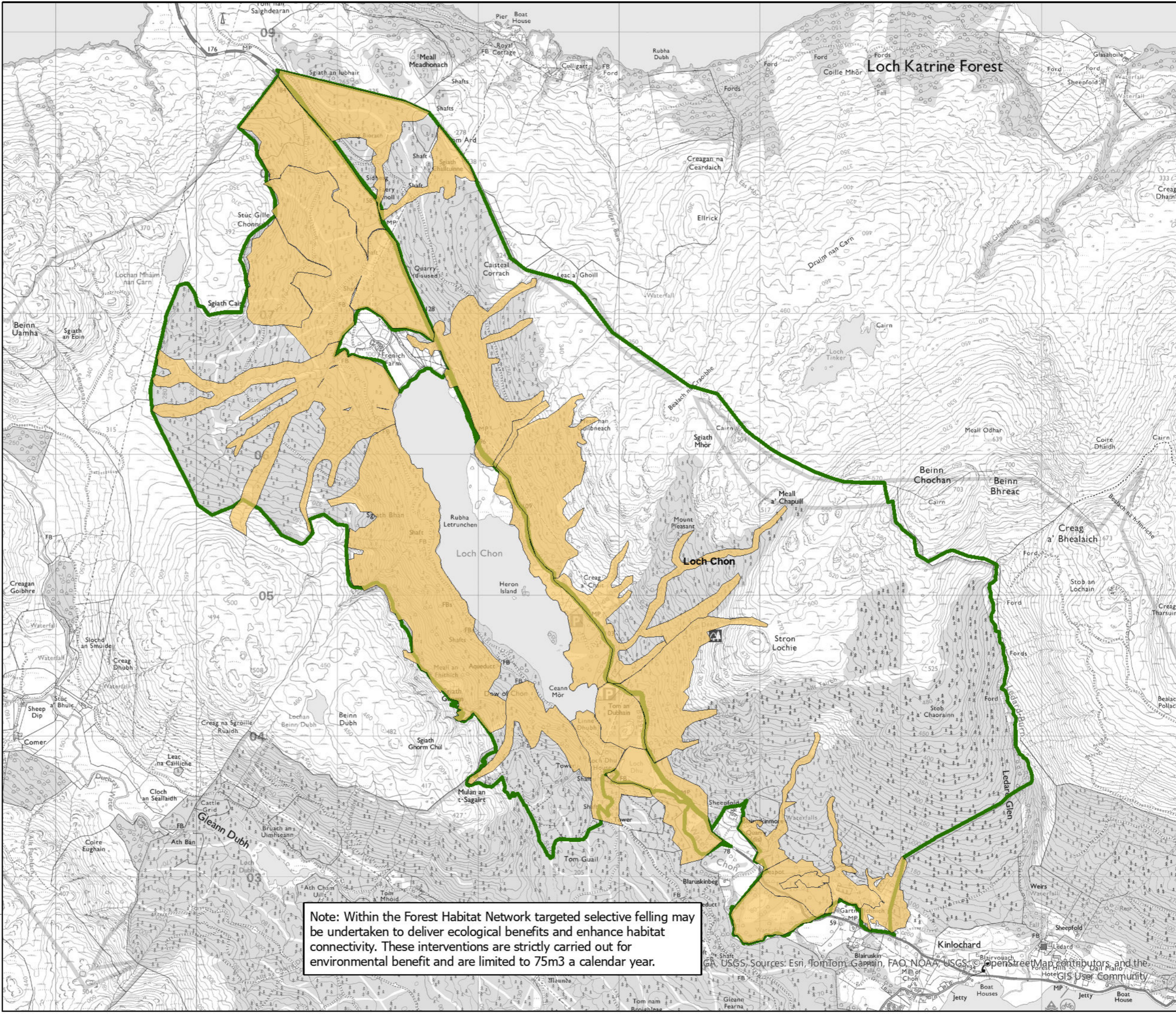


Reproduced by permission of Ordnance Survey on behalf of HMSO. © Crown copyright and database right [2026]. All rights reserved. Ordnance Survey Licence number [100024925]. © Getmapping Plc and Bluesky International Limited 2026.

Declaration by FLS as an Operator:  
 All timber arising from the FLS National Forests and Land represents a negligible risk under EUTR (No 995/210).

Scotland's National Forest Estate is responsibly managed to the UK Woodland Assurance Standard.





Note: Within the Forest Habitat Network targeted selective felling may be undertaken to deliver ecological benefits and enhance habitat connectivity. These interventions are strictly carried out for environmental benefit and are limited to 75m3 a calendar year.

GA, USGS. Sources: Esri, TomTom, Garmin, FAO, NOAA, USGS, © OpenStreetMap contributors, and the GIS User Community