

Moray & Aberdeenshire Forest District Deeside woods

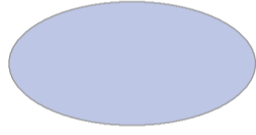


Map 6 Thinning

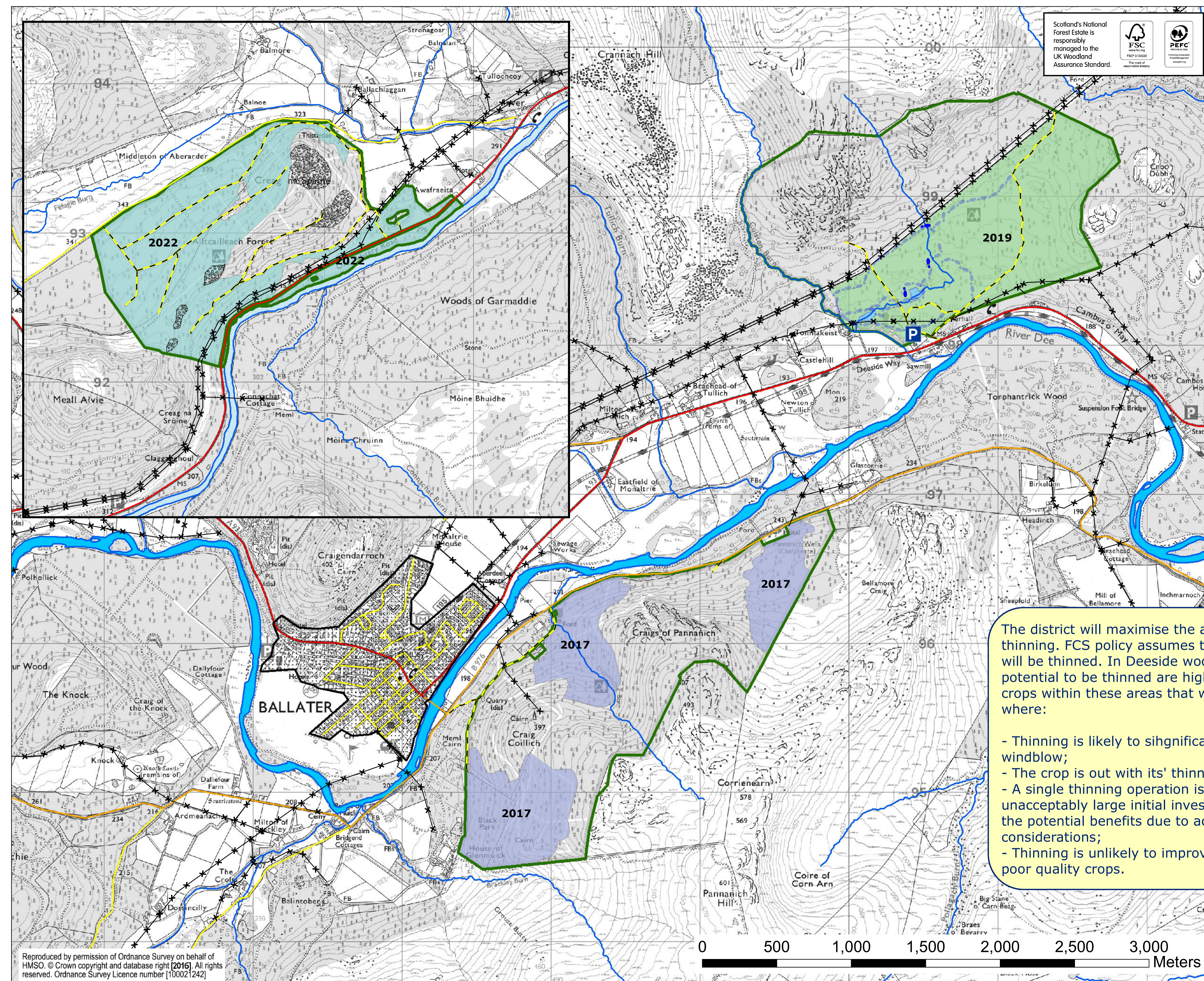
O.S. Grid Ref NO 371 956

Date April 2016

Scale 1:12,500 @A1

Next thinning year

-  2017
-  2019
-  2022



The district will maximise the area managed through thinning. FCS policy assumes that all productive crops will be thinned. In Deeside woods the areas with the potential to be thinned are highlighted on the map. The crops within these areas that will not be thinned are those where:

- Thinning is likely to significantly increase the risk of windblow;
- The crop is out with its' thinning window;
- A single thinning operation is likely to require an unacceptably large initial investment in relation to the potential benefits due to access or market considerations;
- Thinning is unlikely to improve poorly stocked or poor quality crops.

Reproduced by permission of Ordnance Survey on behalf of HMSO. © Crown copyright and database right [2016]. All rights reserved. Ordnance Survey Licence number [100021242]