

Newhill Concept

Author: U320933

Scale @ A3: 1:5,000

Date: 15/05/2020

Legend

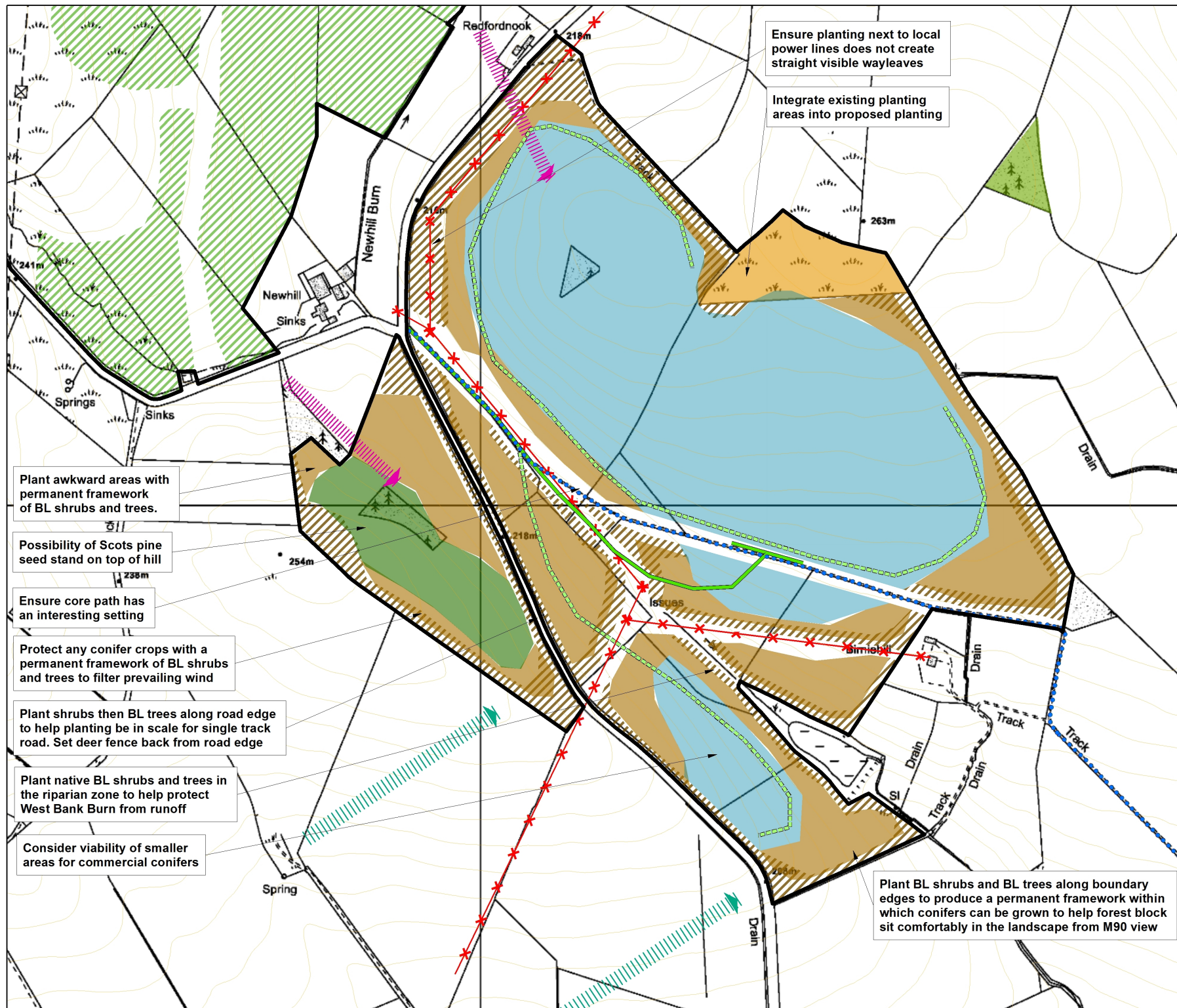
- Core Paths
- Proposed Forest Road
- - - - Proposed Forwarder Access
- 5m contour
- ✂ power line
- ▨ Deer pressure
- ▨ Prevailing wind
- ▭ FLS land
- ▭ Potential conifer areas
- ▭ Scot's pine seed stand
- ▭ Broadleaf Planting
- ▨ Broadleaf shrubs
- National Forest Inventory**
- ▨ Assumed woodland
- ▭ Broadleaved
- ▭ Conifer
- ▭ Young trees

0 50 100 150 200 Metres



Reproduced by permission of Ordnance Survey on behalf of HMSO.
© Crown copyright and database right [2020]. All rights reserved.
Ordnance Survey Licence number [100021242].
© Getmapping Plc and Bluesky International Limited 2020.

Scotland's National
Forest Estate is
responsibly
managed to the
UK Woodland
Assurance Standard.



Ensure planting next to local power lines does not create straight visible wayleaves

Integrate existing planting areas into proposed planting

Plant awkward areas with permanent framework of BL shrubs and trees.

Possibility of Scots pine seed stand on top of hill

Ensure core path has an interesting setting

Protect any conifer crops with a permanent framework of BL shrubs and trees to filter prevailing wind

Plant shrubs then BL trees along road edge to help planting be in scale for single track road. Set deer fence back from road edge

Plant native BL shrubs and trees in the riparian zone to help protect West Bank Burn from runoff

Consider viability of smaller areas for commercial conifers

Plant BL shrubs and BL trees along boundary edges to produce a permanent framework within which conifers can be grown to help forest block sit comfortably in the landscape from M90 view