



### Glen Doll Felling Plans

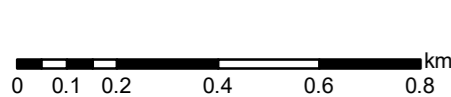
Author: Sophie Cade

Scale @ A2: 1:15,000

Date: 20/02/2025

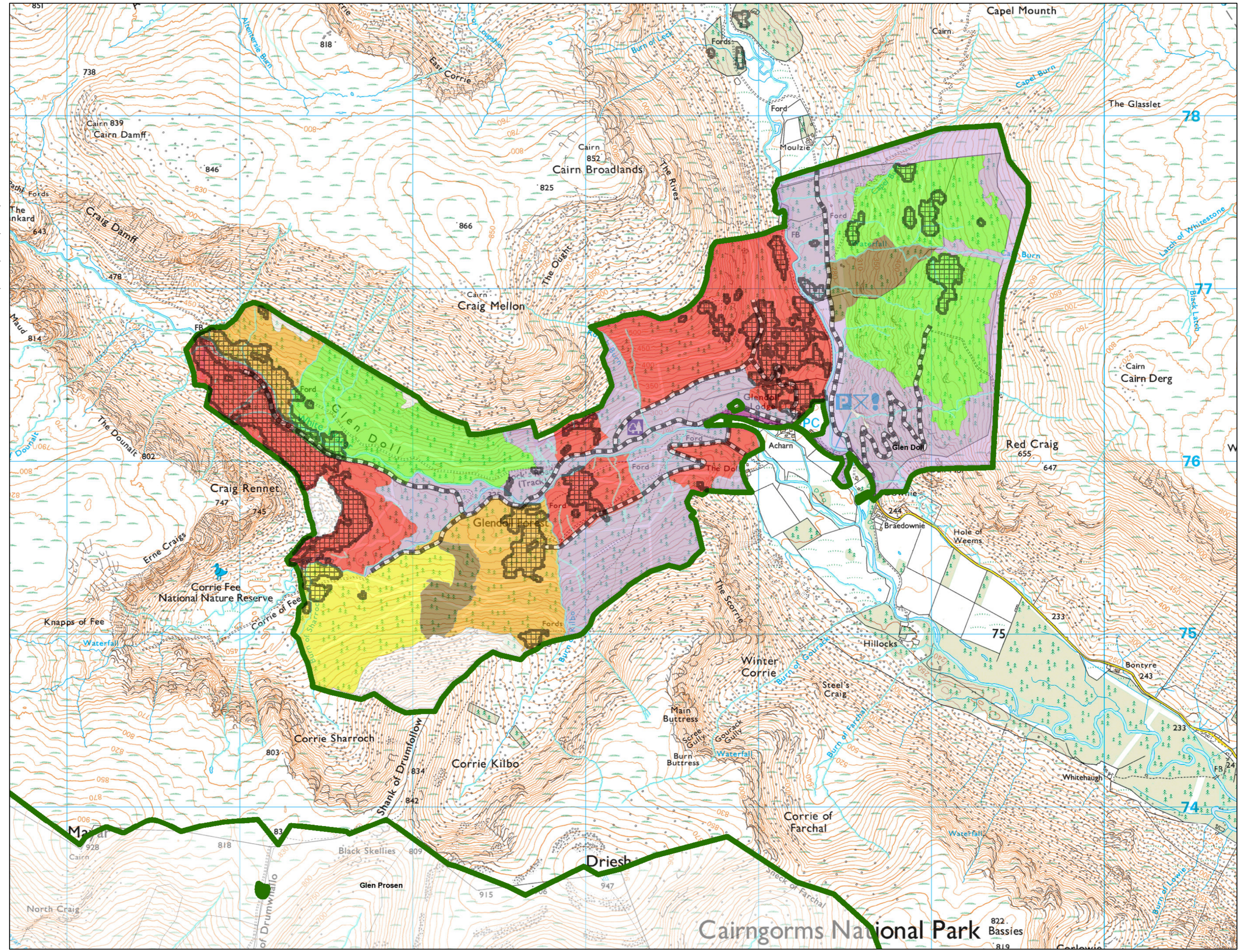
#### Legend

- GB Winter Storm Damage
- Phase 4 felling (2040 - 2044)
- Phase 5 felling (2045 - 2049)
- Phase 6 felling (2050 - 2054)
- Phase 7 felling (2055 - 2059)
- After 2059
- Long Term Retention (Fell after Phase 3)
- Natural Reserve
- Felled or fell year requires review (before current year)
- Phase 1 felling (2025 - 2029)
- Phase 2 felling (2030 - 2034)
- Phase 3 felling (2035 - 2039)
- Minimum Intervention
- Coppice
- Low Impact Silviculture
- Open
- Missing Data

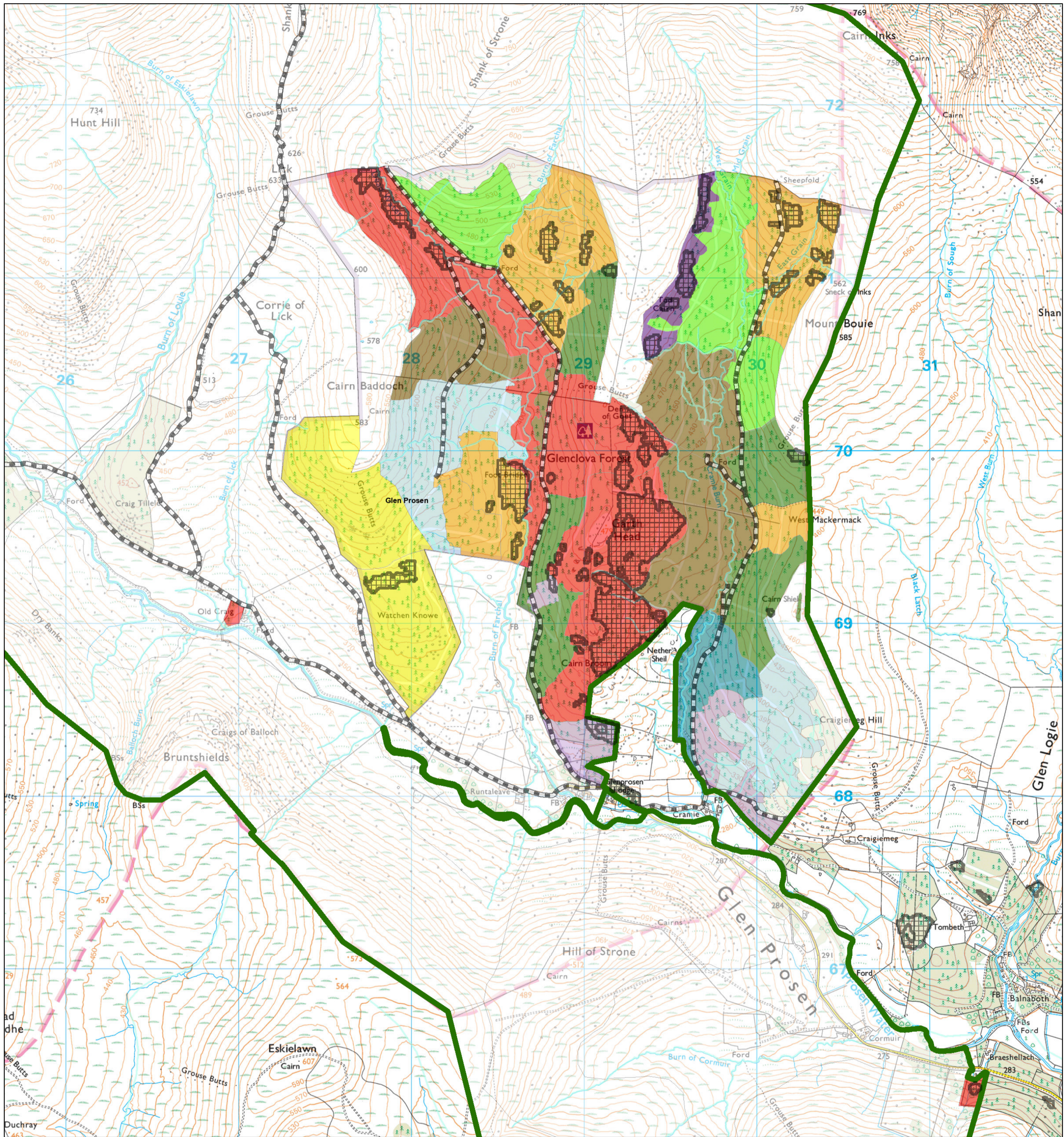


Reproduced by permission of Ordnance Survey on behalf of HMSO. © Crown copyright and database right 2025. All rights reserved. Ordnance Survey Licence number AC0000820350. © Getmapping Plc and Bluesky International Limited 2025.

Scotland's national forests and land are responsibly managed to the UK Woodland Assurance Standard.



Cairngorms National Park



### Glen Prosen Felling Plans

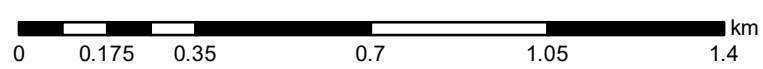
Scale @ A2: 1:15,000

Date: 20/02/2025

Author: Sophie Cade

#### Legend

- GB Winter Storm Damage
- Blocks
- Forest Roads
- Watercourses
- Scenario Management Coupes (Felling Year)
- Felled or fell year requires review (before current year)
- Phase 1 felling (2025 - 2029)
- Phase 2 felling (2030 - 2034)
- Phase 3 felling (2035 - 2039)
- Phase 4 felling (2040 - 2044)
- Phase 5 felling (2045 - 2049)
- Phase 6 felling (2050 - 2054)
- Phase 7 felling (2055 - 2059)
- After 2059
- Long Term Retention (Fell after Phase 3)
- Natural Reserve
- Minimum Intervention
- Coppice
- Low Impact Silviculture
- Open
- Missing Data



Reproduced by permission of Ordnance Survey on behalf of HMSO. © Crown copyright and database right 2025. All rights reserved. Ordnance Survey Licence number AC0000820350. © Getmapping Plc and Bluesky International Limited 2025.

Scotland's national forests and land are responsibly managed to the UK Woodland Assurance Standard.

