

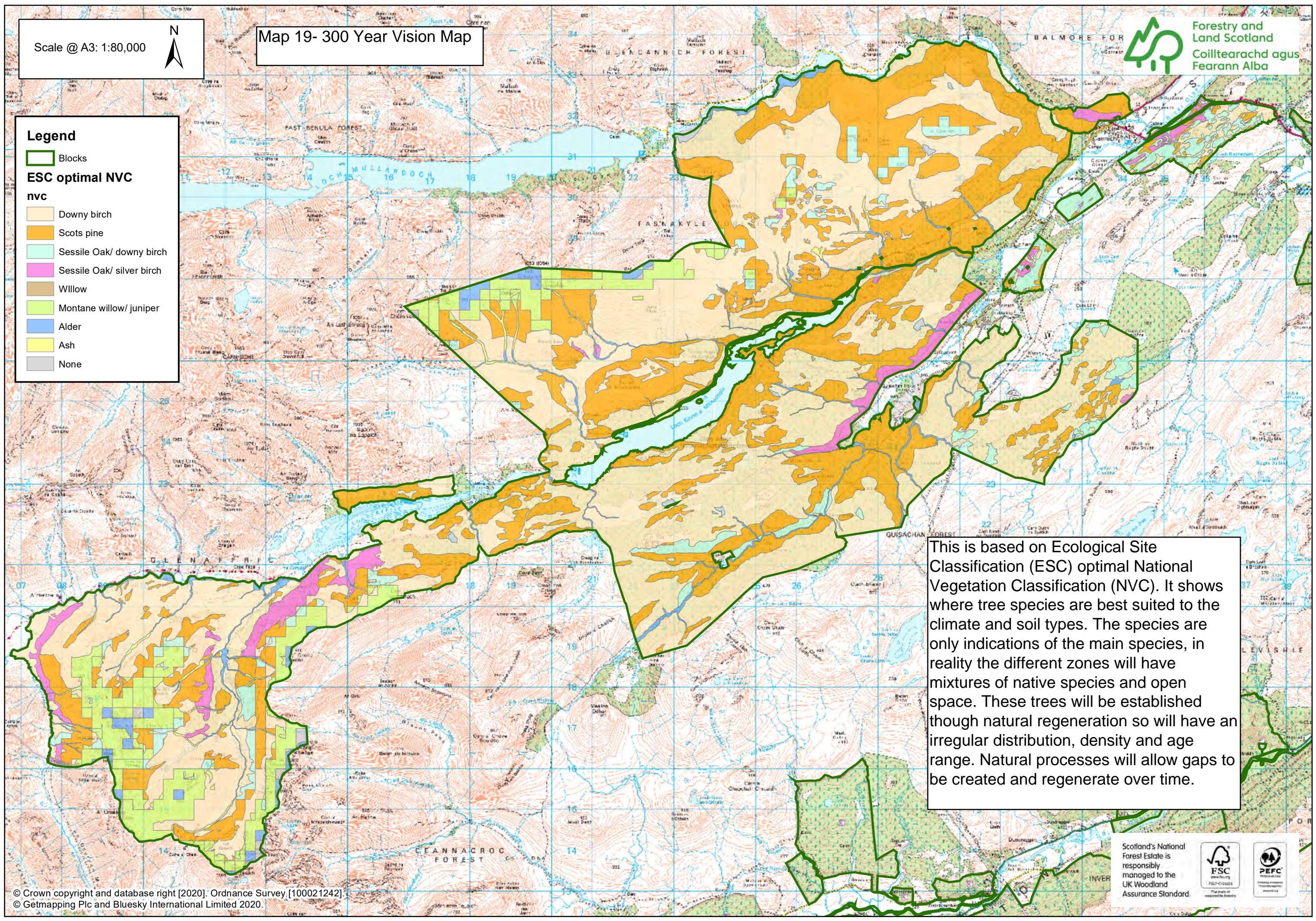
Scale @ A3: 1:80,000



Map 19- 300 Year Vision Map

Legend

- Blocks
- ESC optimal NVC**
- nvc**
- Downy birch
- Scots pine
- Sessile Oak/ downy birch
- Sessile Oak/ silver birch
- Willow
- Montane willow/ juniper
- Alder
- Ash
- None



This is based on Ecological Site Classification (ESC) optimal National Vegetation Classification (NVC). It shows where tree species are best suited to the climate and soil types. The species are only indications of the main species, in reality the different zones will have mixtures of native species and open space. These trees will be established through natural regeneration so will have an irregular distribution, density and age range. Natural processes will allow gaps to be created and regenerate over time.