


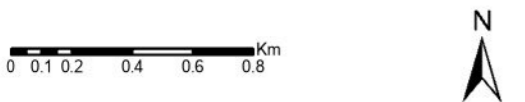


**M7: Catchments & Watercourses**

Author: FLS Planning  
Scale @ A3: 1:25,000  
Date: 4/16/2025

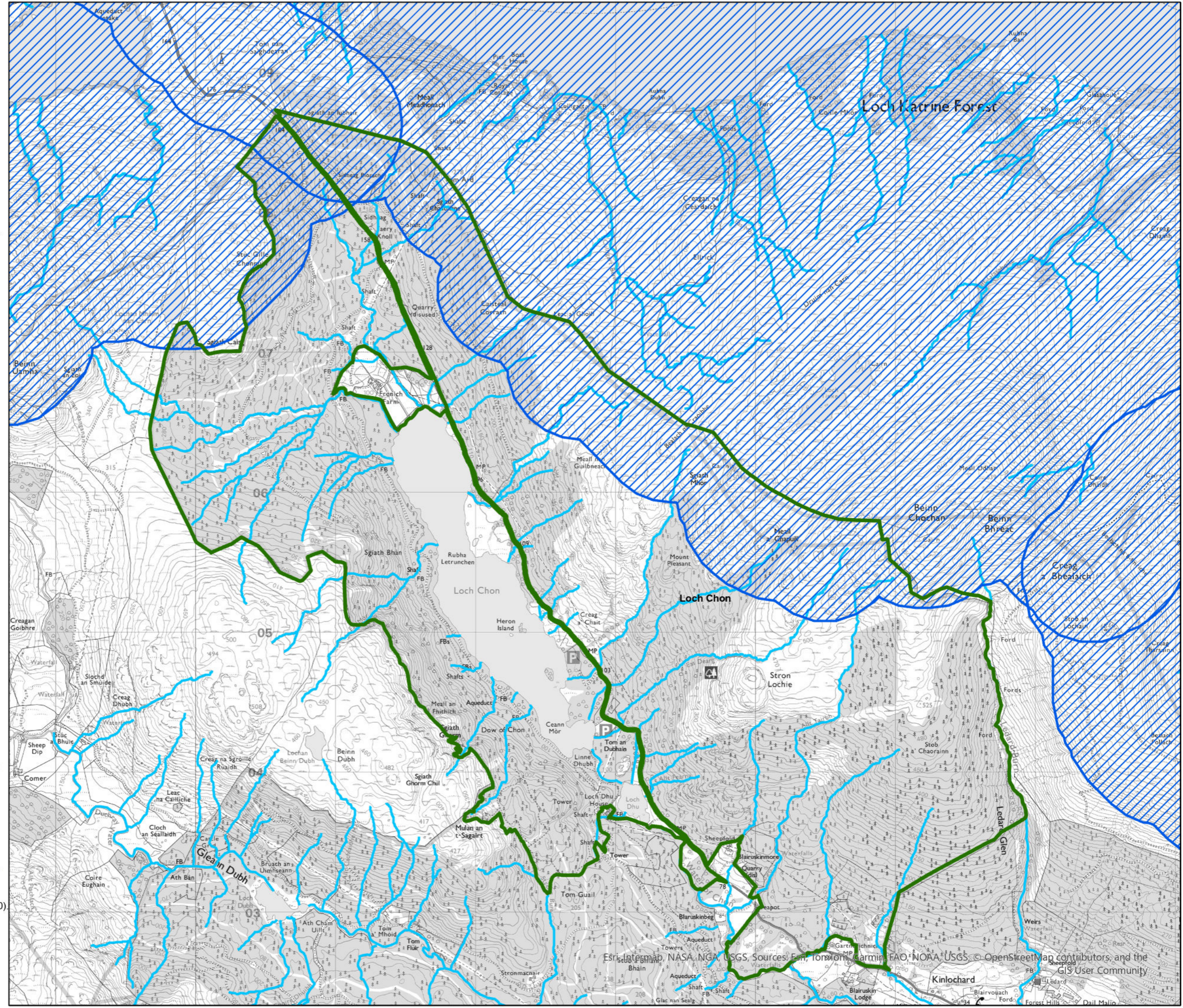
- Legend**
-  LMP Boundary
  -  Scottish Water Catchments
  -  Watercourses



Reproduced by permission of Ordnance Survey on behalf of HMSO.  
© Crown copyright and database right [2025]. All rights reserved.  
Ordnance Survey Licence number [100024925].  
© Getmapping Plc and Bluesky International Limited 2025.

Declaration by FLS as an Operator.  
All timber arising from the FLS National Forests and  
Land represents a negligible risk under EUTR (No 995/210).

Scotland's National  
Forest Estate is  
responsibly  
managed to the  
UK Woodland  
Assurance Standard.



Esri, Intermap, NASA, NGA, USGS. Sources: Esri, TomTom, Garmin, FAO, NOAA, USGS, © OpenStreetMap contributors, and the GIS User Community