

Moray & Aberdeenshire Forest District

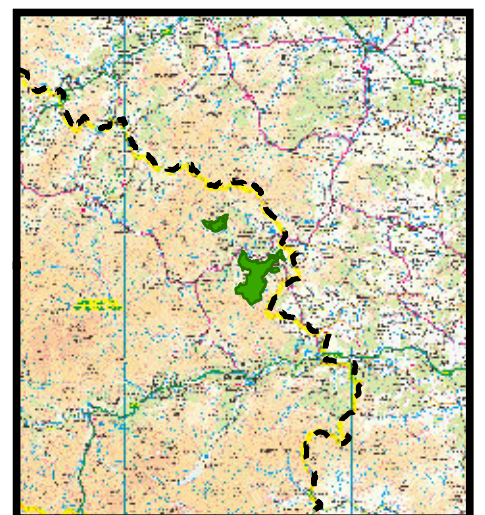
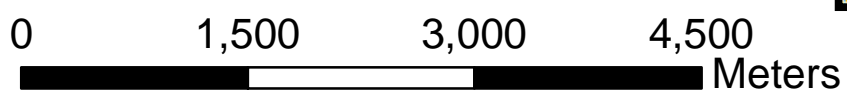
Strathdon Design Plan

Map 1 Location

Scale: 1:50,000 @ A3

Date: August 2012

- Strathdon blocks
- A roads
- Minor roads
- Cairngorms national park boundary



Reproduced by permission of Ordnance Survey on behalf of HMSO. © Crown copyright and database right [2012]. All rights reserved. Ordnance Survey Licence number [100021242]

