

**Moray & Aberdeenshire Forest District**  
**Bennachie**

**Thinning Map**

Date: January 2017  
Scale: 1:18,000 at A1  
O.S. Grid Ref NJ 670217

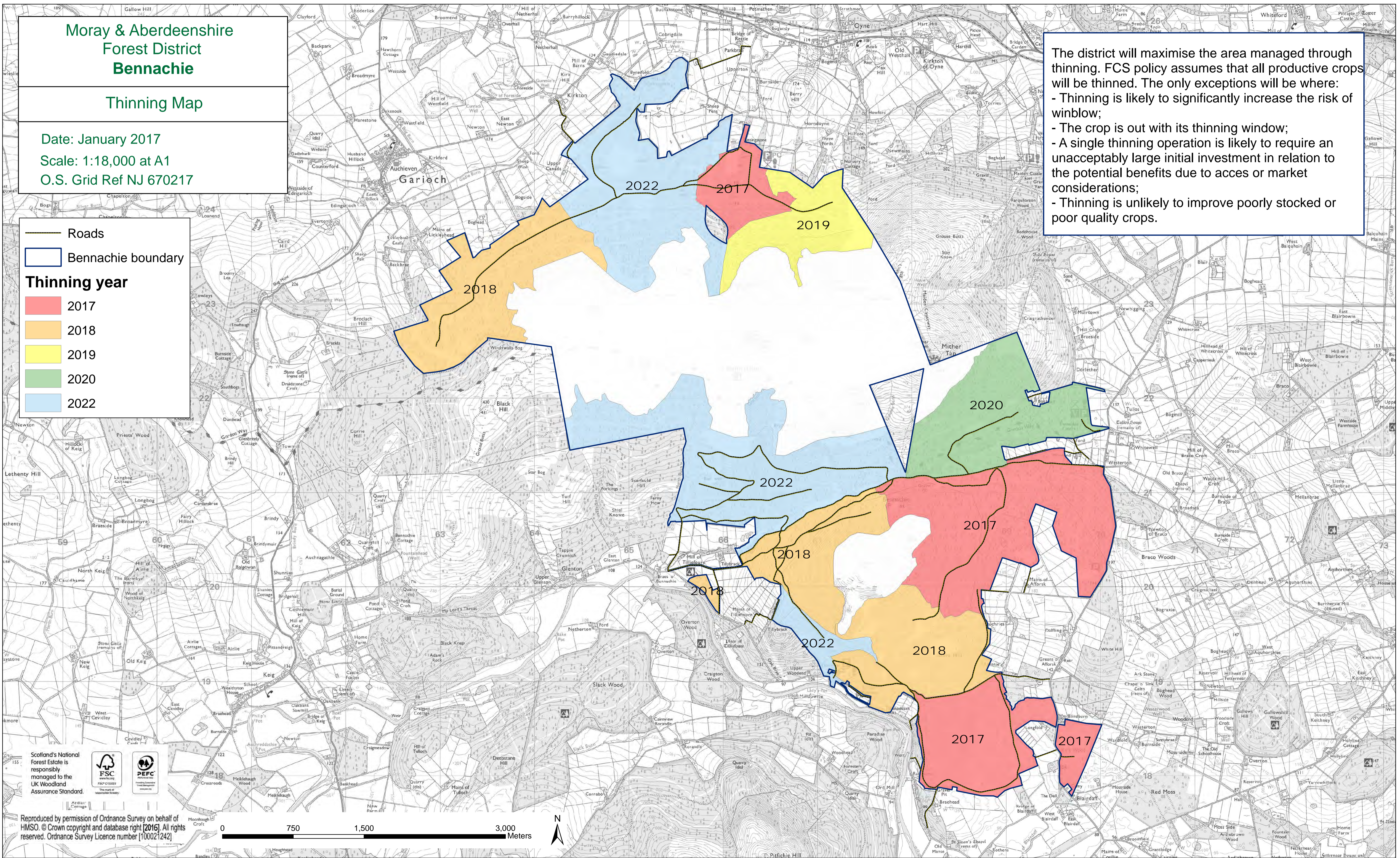
— Roads  
□ Bennachie boundary

**Thinning year**

- 2017
- 2018
- 2019
- 2020
- 2022

The district will maximise the area managed through thinning. FCS policy assumes that all productive crops will be thinned. The only exceptions will be where:

- Thinning is likely to significantly increase the risk of winblow;
- The crop is out with its thinning window;
- A single thinning operation is likely to require an unacceptably large initial investment in relation to the potential benefits due to access or market considerations;
- Thinning is unlikely to improve poorly stocked or poor quality crops.



Reproduced by permission of Ordnance Survey on behalf of HMSO. © Crown copyright and database right [2016]. All rights reserved. Ordnance Survey Licence number [100021242]

