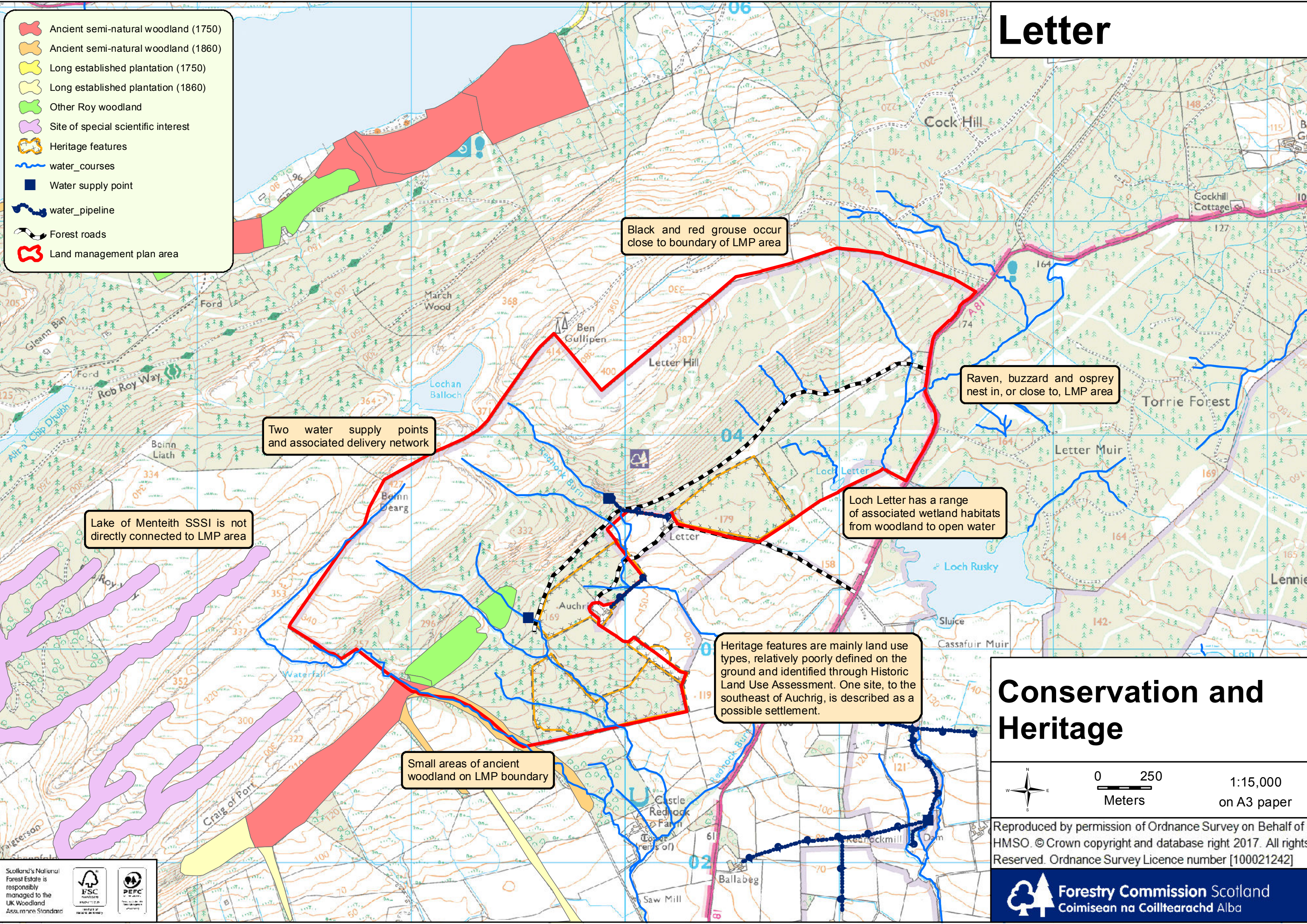


Letter

- Ancient semi-natural woodland (1750)
- Ancient semi-natural woodland (1860)
- Long established plantation (1750)
- Long established plantation (1860)
- Other Roy woodland
- Site of special scientific interest
- Heritage features
- water_courses
- Water supply point
- water_pipeline
- Forest roads
- Land management plan area



Black and red grouse occur close to boundary of LMP area

Raven, buzzard and osprey nest in, or close to, LMP area

Two water supply points and associated delivery network

Lake of Menteith SSSI is not directly connected to LMP area

Loch Letter has a range of associated wetland habitats from woodland to open water

Heritage features are mainly land use types, relatively poorly defined on the ground and identified through Historic Land Use Assessment. One site, to the southeast of Auchrig, is described as a possible settlement.

Small areas of ancient woodland on LMP boundary

Conservation and Heritage

0 250 Meters 1:15,000 on A3 paper

Reproduced by permission of Ordnance Survey on Behalf of HMSO. © Crown copyright and database right 2017. All rights Reserved. Ordnance Survey Licence number [100021242]

