



# Have your say

## South Knapdale

### What is today's consultation about?

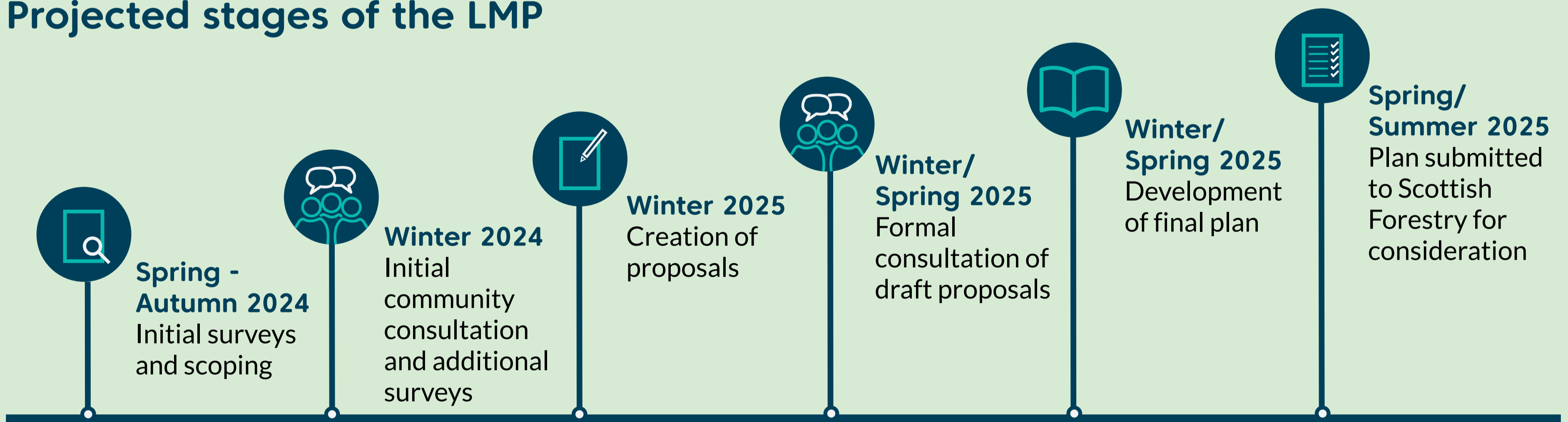
Welcome to this exhibition looking at the long term vision for South Knapdale. The purpose of this event is to provide you with information, facilitate discussion and to let you know how you can comment on the Land Management Plan (LMP) currently being developed. In addition to these exhibition boards, you can find more information on our website:

[forestryandland.gov.scot](http://forestryandland.gov.scot)

### What is the purpose of a Land Management Plan?

LMP's describe how Forestry and Land Scotland intends to manage the landscape over a period of 10 years, and also set out our longer term objectives. When we develop an LMP, we gather views from a range of different stakeholders, most particularly from local communities. This helps us to develop the plan while balancing competing objectives.

### Projected stages of the LMP



### How to comment

We are in the scoping stage of this plan and want to hear your views. Please use one of the following methods to share your opinions or to find out more as the plan is in development.

- 0300 067 6650
- [enquiries.west@forestryandland.gov.scot](mailto:enquiries.west@forestryandland.gov.scot)
- Forestry and Land Scotland, Whitegates, Lochgilphead, PA31 8RS
- [forestryandland.gov.scot/what-we-do/planning/consultations](http://forestryandland.gov.scot/what-we-do/planning/consultations)

Scan the QR Code



Forestry and Land Scotland's forests are independently certified as being responsibly managed. We're regularly audited against the UK Woodland Assurance Standard - the standard endorsed in the UK by the International Forest Stewardship Council® and the Programme for the Endorsement of Forest Certification.

Keeping in touch with our stakeholders and understanding their views is important to us and an important part of the standard. We welcome all comments on these proposals.

The mark of responsible forestry





## The site and surrounding area

### Location

The South Knapdale Land Management Plan (LMP) covers a total area of 4,235ha and is located north of the Kintyre peninsula and south of the Crinan Canal, extending to the shores of West Loch Tarbert at its lower extent and Artilligan Cottage at its upper extent. The B80247 envelopes the LMP area, linking it to Tarbert and the A83. The LMP area comprises of three forest blocks: Meall Mhor, Torinturk and Coulaghailtro. These forest blocks share the same timber haulage routes with similar land management objectives and landscape character.



### Existing conditions

Approximately 70% of the LMP area is under woodland cover with Sitka spruce making up 86% of the planted area. All three forest blocks include priority habitats such as blanket bog and upland heath. Meall Mhor contains a Site of Special Scientific Interest (SSSI) and areas of designated ancient woodland, as does the lower third of Torinturk, which links into Tarbert Woods Special Area of Conservation.



The LMP area contains a range of heritage features including sheepfolds, dykes, farmsteads, shieling huts and enclosures. Within Torinturk are two Scheduled Monuments: two prehistoric burial cairns and a prehistoric dun. Such attractions mean the area has good community and visitor use, with well used core paths.



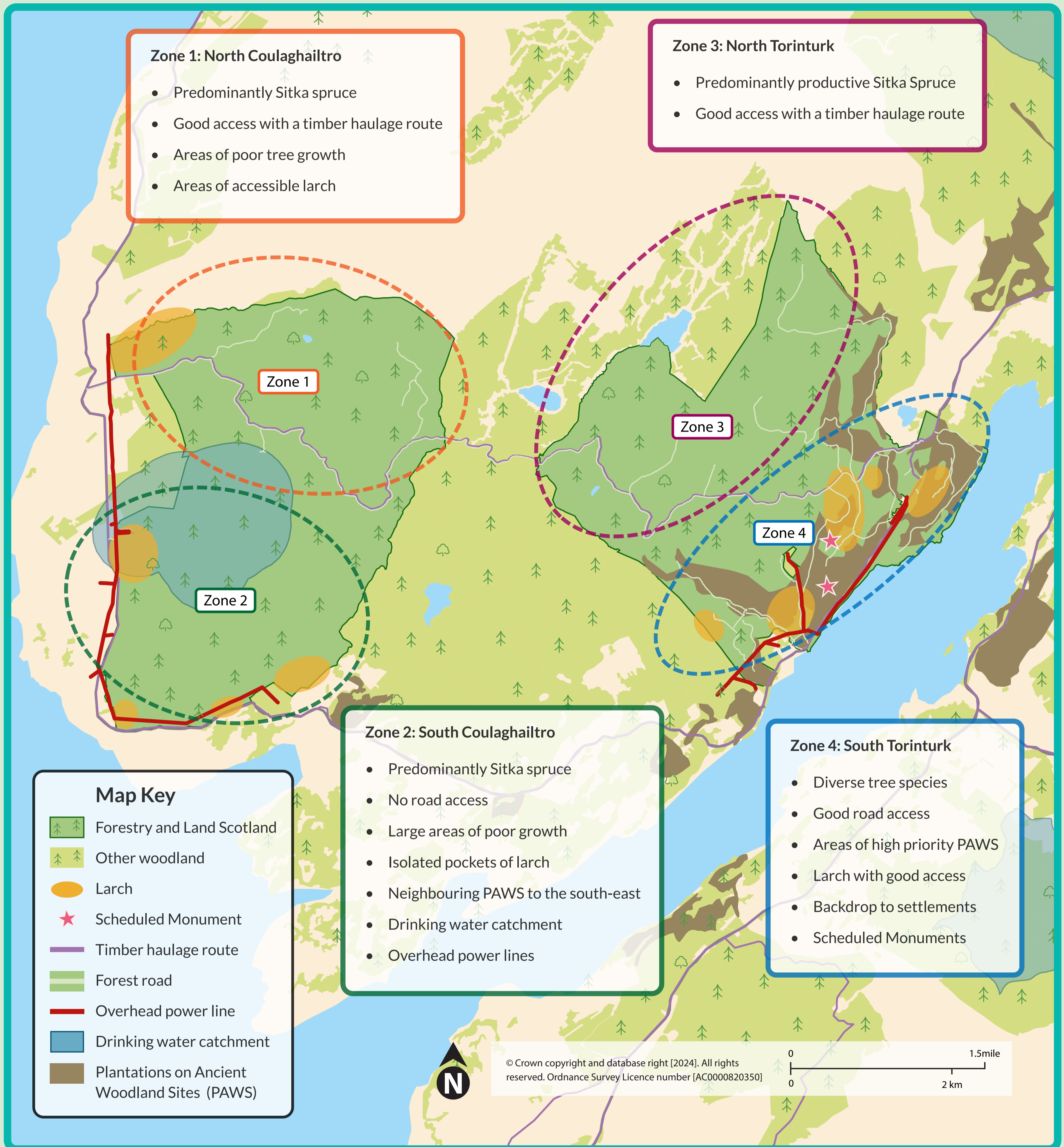
Meall Mhor neighbours a fish farm in Loch Fyne. There are a range of priority wildlife species such as black grouse, pine marten, badgers and red squirrels within the LMP area.





## Constraints and opportunities - Coulaghaitro and Torinturk

This map highlights some of the features, which may provide us with opportunities along with other features which may act as constraints.

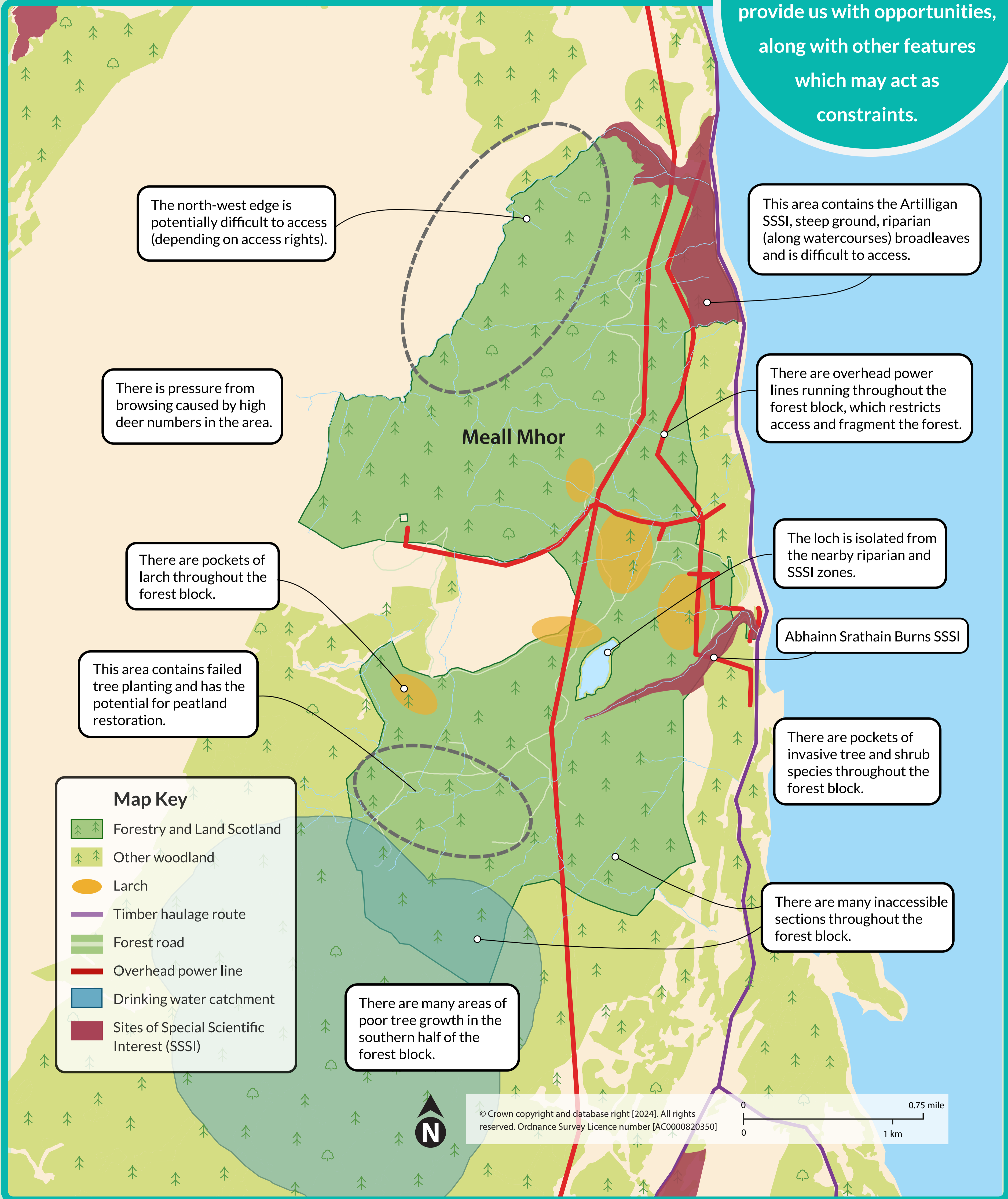






# Constraints and opportunities - Meall Mhor

This map highlights some of the features, which may provide us with opportunities, along with other features which may act as constraints.



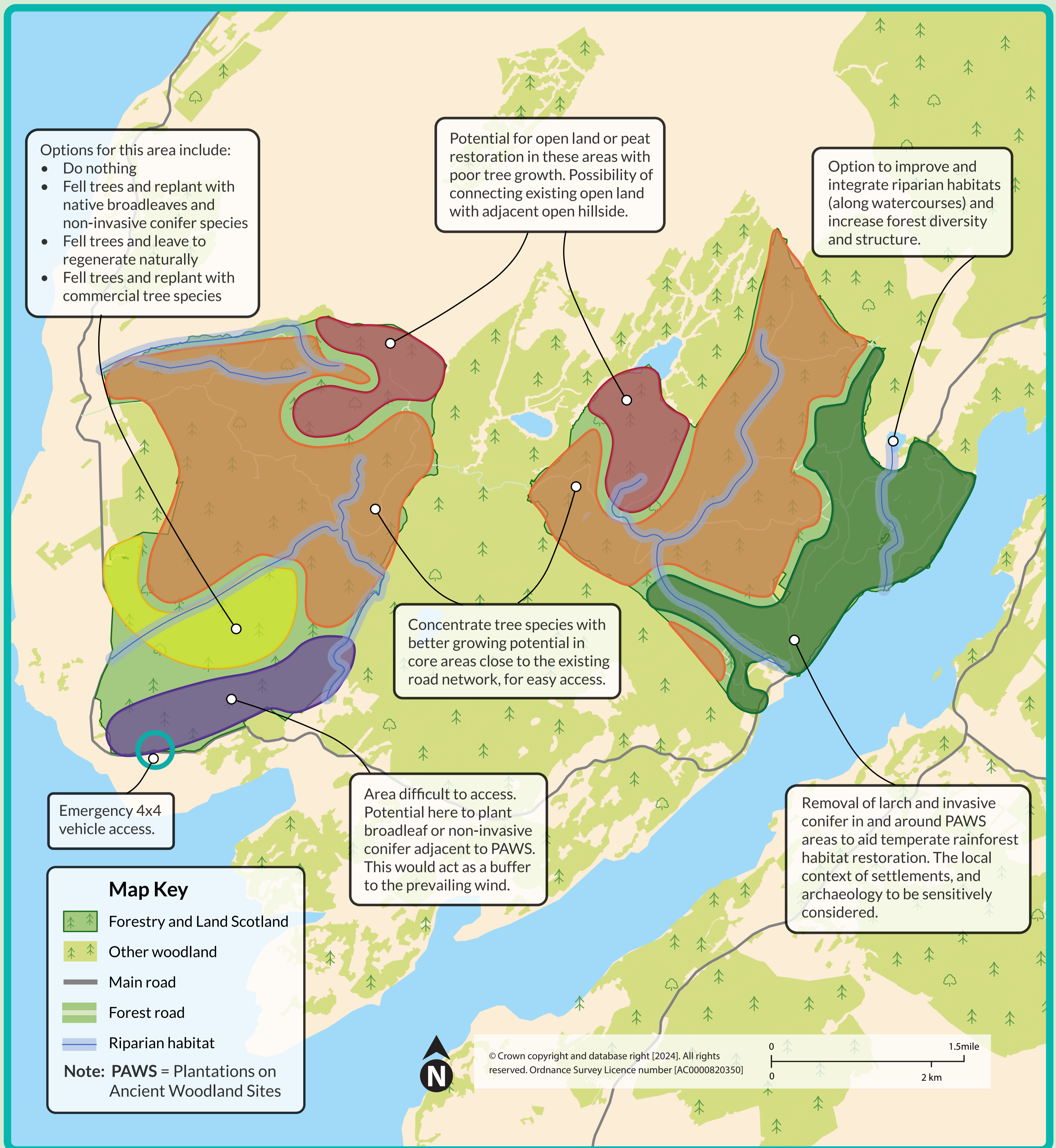




# Concept - Coulaghailtro and Torinturk

This map puts forward some of the potential options to be considered for Coulaghailtro and Torinturk.

Feel free to let us know what you think with one of the post-it notes provided.



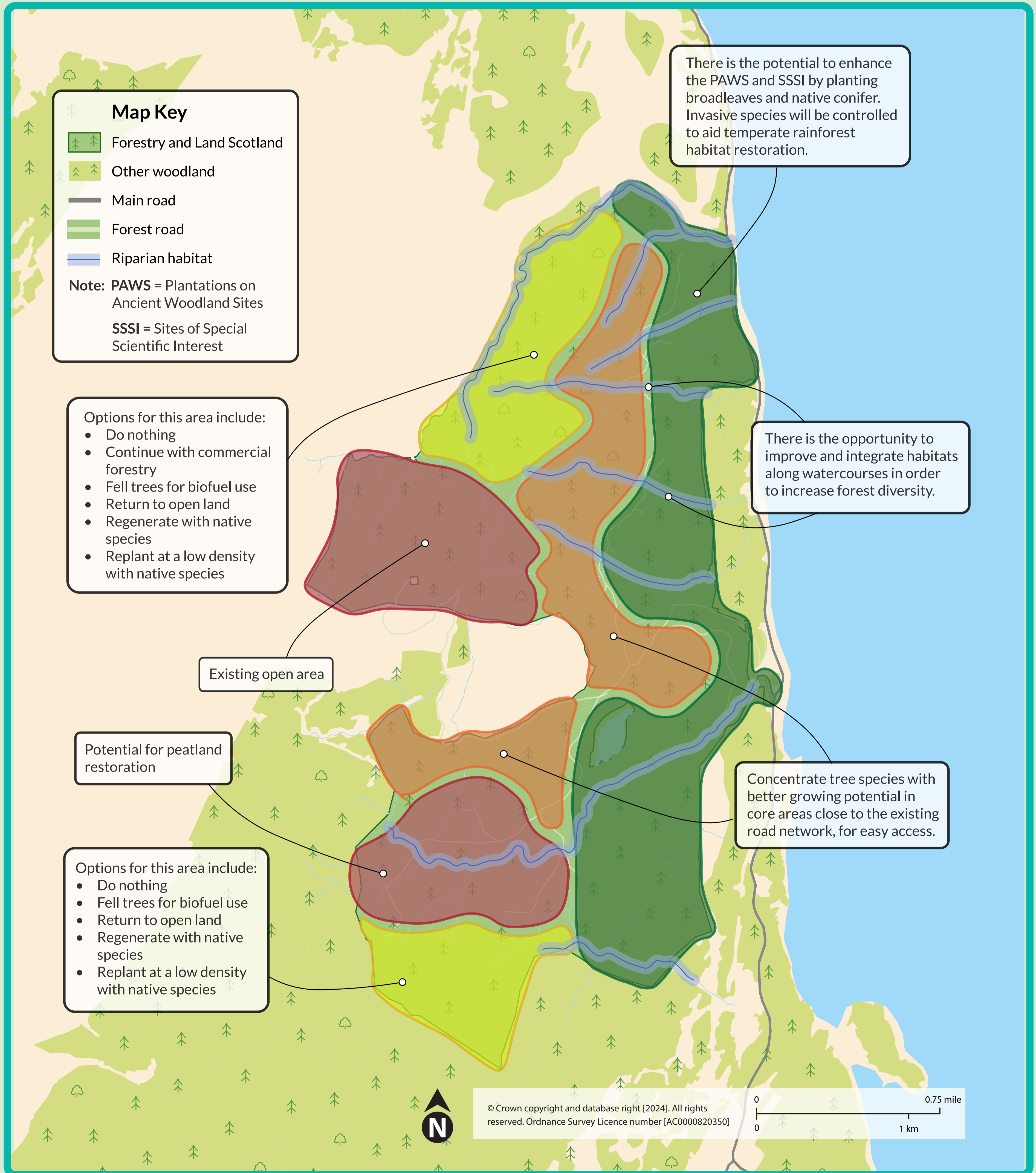




## Concept - Meall Mhor

This map puts forward some of the potential options to be considered for Meall Mhor.

Feel free to let us know what you think with one of the post-it notes provided.







## Draft LMP objectives

- Rationalise and identify core areas of good quality timber with existing access. Ensure replanting to maximise diversity of species during restock.
- Restructure coupes (management areas) to consider appropriate scale of the land, landform and efficiency of site operations.
- Sustainable road construction: Construct and upgrade roads only where necessary for the purpose of this plan period.
- Review, protect and restore high and medium ecological potential Plantations on Ancient Woodland Sites (PAWs) through removal of invasive species, halo thinning (removing newer trees), deer management and establish native broadleaf trees to aid temperate rainforest habitat restoration.
- Where appropriate restructure and consolidate forests in the vicinity of utilities to minimise disruption to forest operations and access.
- Review the age structure of the forest in exposed areas and consider felling coupe design and subsequent restock design and species mix.
- Ensure the buffer around Scheduled Monuments and other sites of local heritage interests are managed.
- Identify water sources and catchments, protect protect during harvesting and restock with appropriate plant species and carefully consider coupe design.
- Maximise opportunities to integrate FLS forest blocks with adjacent landscape to enable and promote habitat connectivity e.g. consider forest edge design, riparian corridors and temperate rainforest habitat. Where appropriate consider working in partnership with landowners and the wider community.
- Riparian (along watercourses) and Priority Open Habitat: remove invasive non-native species and manage deer numbers to enable natural regeneration and natural successional development of native broadleaf species to occur along riparian habitats. Natural regeneration and over grazing to be managed to maintain priority open habitat.

## Have your say!

We are keen to hear your views on our objectives, as well as how and why you value this place. Please use the post-it notes provided to add to the maps on the tables.

## Next steps

We will carry out surveys and collect information as well as reviewing all comments received from stakeholders before formalising our plans.

## Keep these questions in mind:

- What is your connection to this place?
- Why is this place important to you?
- Is there a significant feature or issues we should be aware of?
- Do you have a vision of what this forest and landscape should look like in the future?