

## Soils

Scale @ A3: 1:25,000

Date: 02/07/2025

### Legend

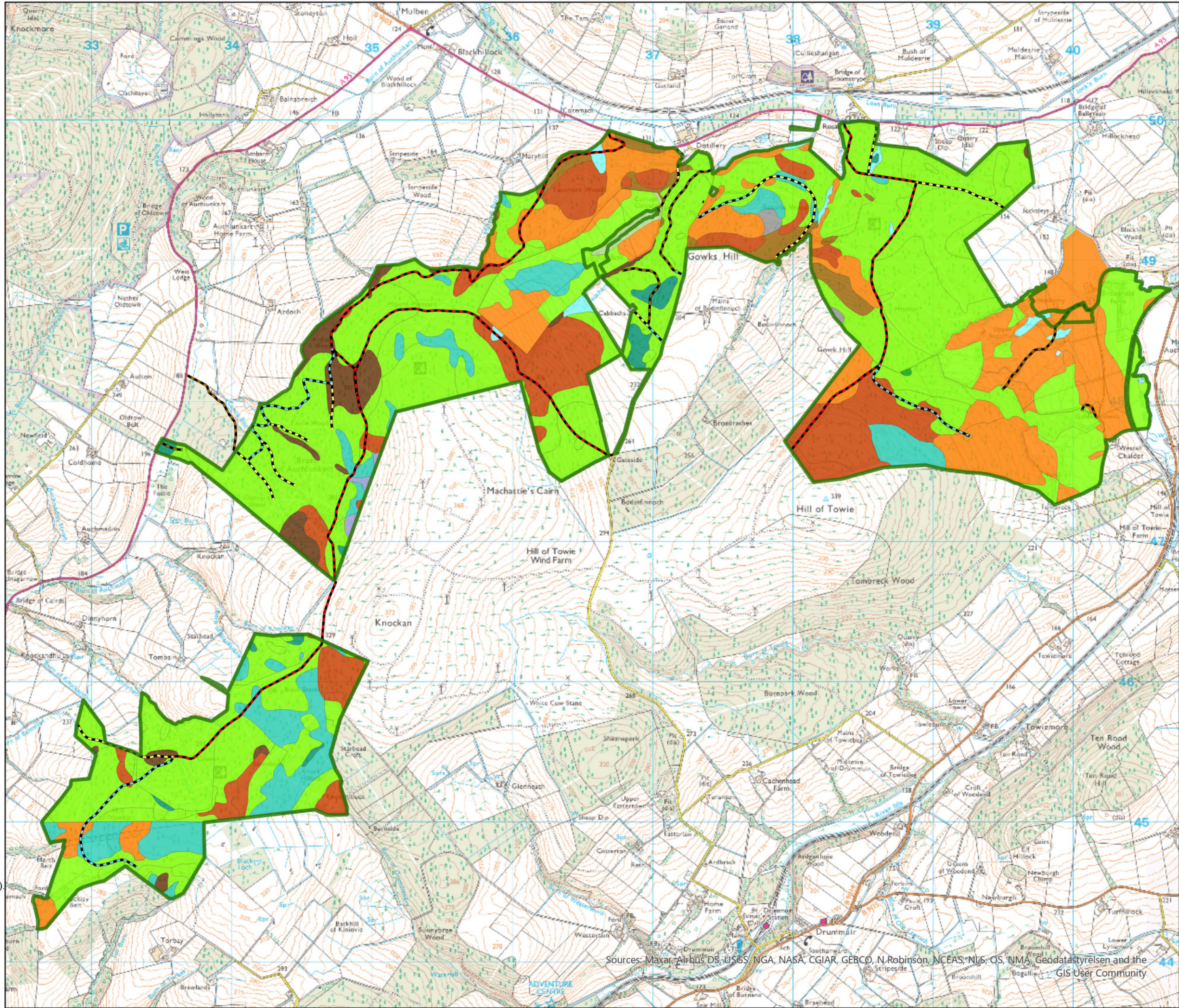
1 [Typical Brown Earth]	7b [Brown Surface-Water Gley]
1z [Podzolic Brown Earth]	8c [Juncus effusus Bog]
3 [Typical Podzol]	9b [Tussocky Molinia Bog, Molinia, Calluna Bog]
4 [Typical Ironpan Soil]	11c [Trichophorum, Calluna Blanket Bog]
4z [Podzolic Ironpan Soil]	13c [Ranker Complex]
4b [Intergrade Ironpan Soil]	VC [Valley Complex]
5 [Typical Ground-Water Gley]	
6 [Typical Peaty Surface-Water Gley]	<b>Road Classification</b>
6z [Podzolic Peaty Surface-Water Gley]	Unclassified
7 [Typical Surface-Water Gley]	A
7z [Podzolic Surface-Water Gley]	B
	C
	LMP Area

0 0.4 0.8 1.6 2.4 3.2 Km



Reproduced by permission of Ordnance Survey on behalf of HMSO.  
© Crown copyright and database right [2025]. All rights reserved.  
Ordnance Survey Licence number AC0000820350.  
© Getmapping Plc and Bluesky International Limited 2025.

Declaration by FLS as an Operator.  
All timber arising from the FLS National Forests and  
Land represents a negligible risk under EUTR (No 995/210).



Sources: Maxar, Airbus DS, USGS, NGA, NASA, CGIAR, GERCO, N Robinson, NCEAS, NIS, OS, NMA, Geodatastyrelsen and the GIS User Community