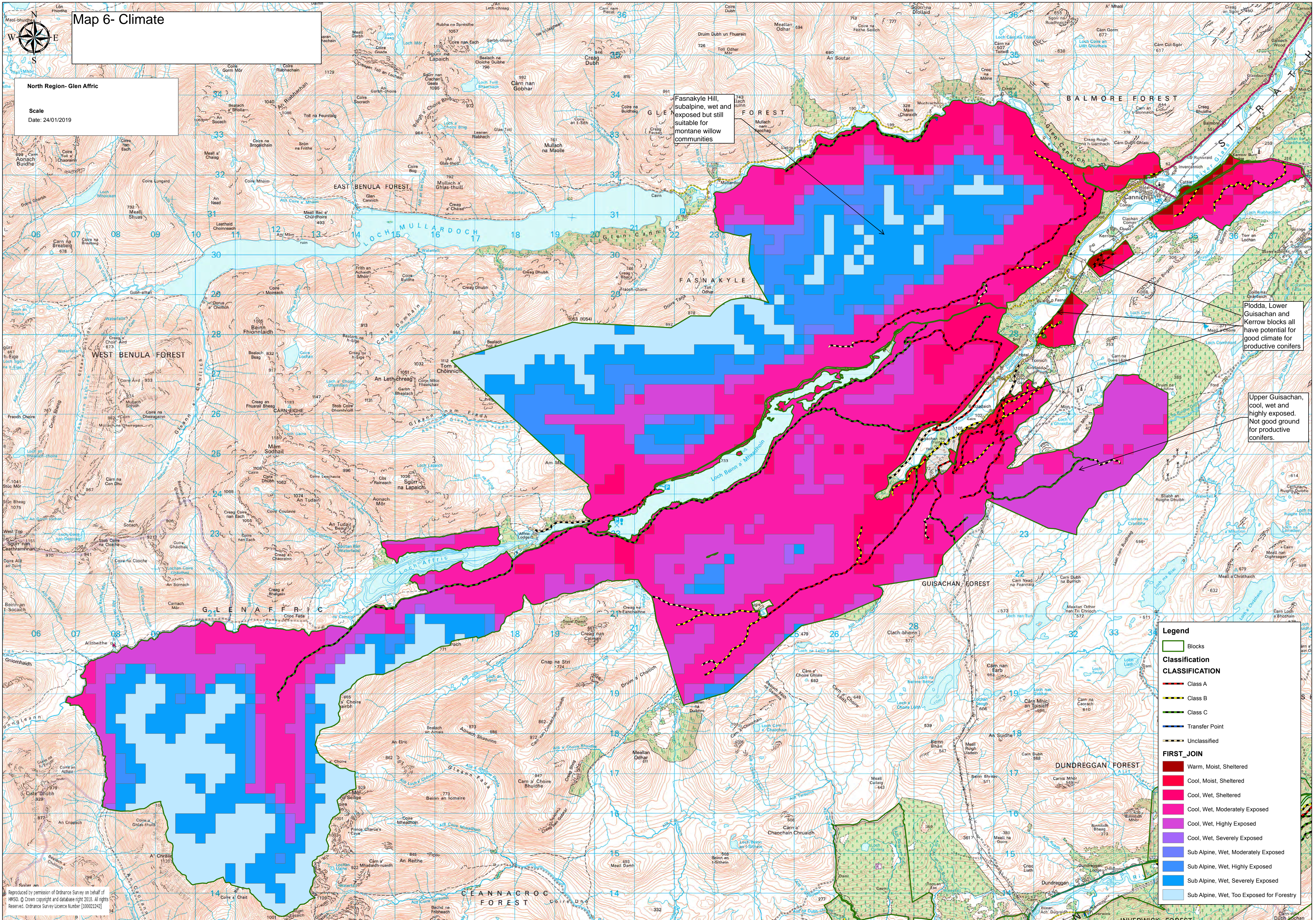


# Map 6- Climate

North Region- Glen Affric

Scale  
Date: 24/01/2019



Fasnakyle Hill, subalpine, wet and exposed but still suitable for montane willow communities

Plodda, Lower Guisachan and Kerrow blocks all have potential for good climate for productive conifers

Upper Guisachan, cool, wet and highly exposed. Not good ground for productive conifers.

**Legend**

- Blocks

**Classification**

**CLASSIFICATION**

- Class A
- Class B
- Class C
- Transfer Point
- Unclassified

**FIRST\_JOIN**

- Warm, Moist, Sheltered
- Cool, Moist, Sheltered
- Cool, Wet, Sheltered
- Cool, Wet, Moderately Exposed
- Cool, Wet, Highly Exposed
- Cool, Wet, Severely Exposed
- Sub Alpine, Wet, Moderately Exposed
- Sub Alpine, Wet, Highly Exposed
- Sub Alpine, Wet, Severely Exposed
- Sub Alpine, Wet, Too Exposed for Forestry

Reproduced by permission of Ordnance Survey on behalf of HMSO. © Crown copyright and Database right 2019. All rights Reserved. Ordnance Survey Licence Number [100021242]