

Leanachan Land Management Plan


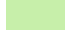





Climate Map

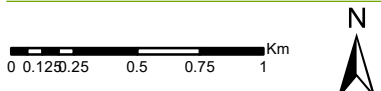
Author: U321221

Scale @ A3: 1:30,000

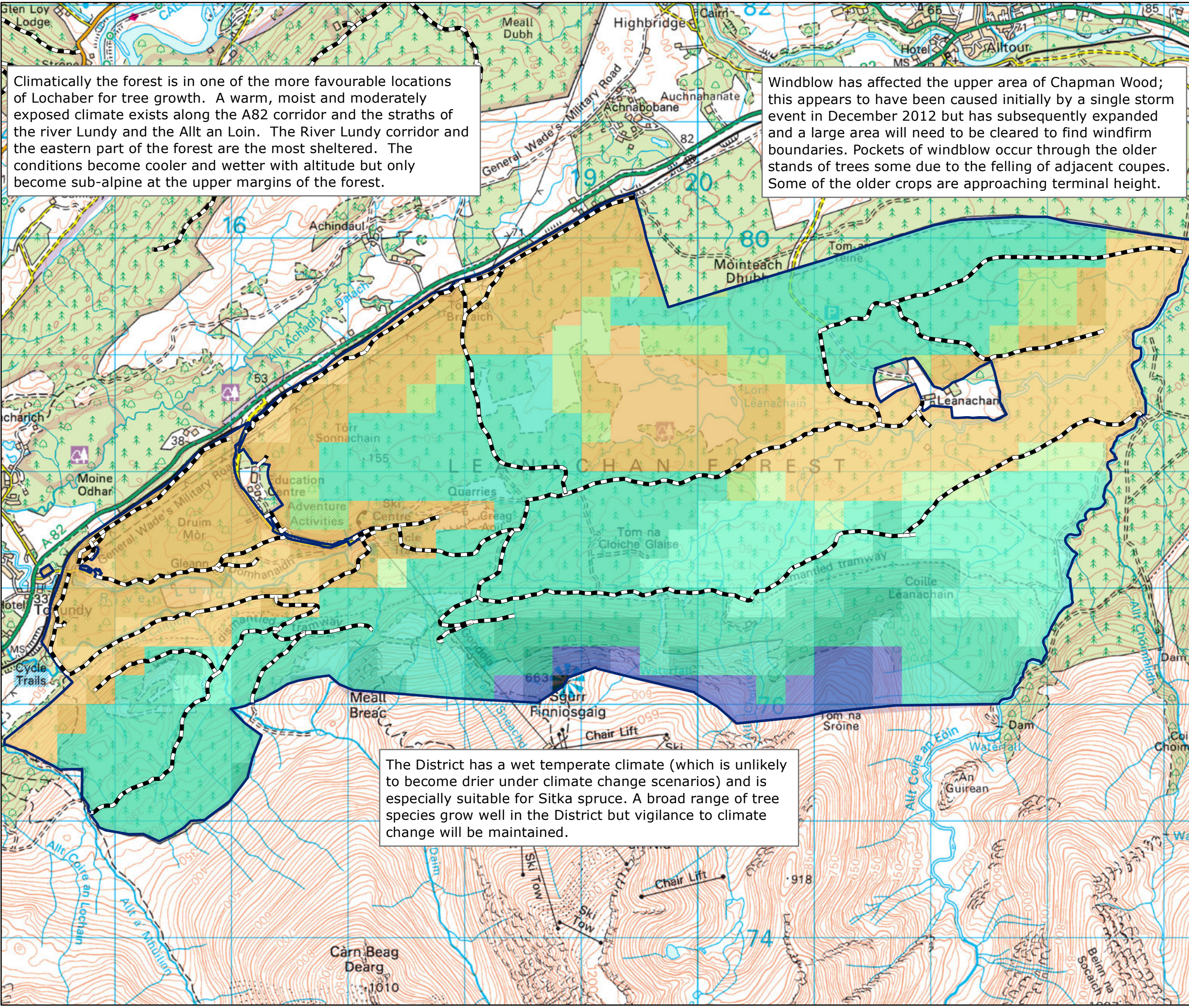
Date: 25/03/2022

Legend

-  Leanachan LMP Area
-  Forest Roads
-  Cool, Moist, Moderately Exposed
-  Cool, Moist, Sheltered
-  Cool, Wet, Highly Exposed
-  Cool, Wet, Moderately Exposed
-  Cool, Wet, Severely Exposed
-  Cool, Wet, Sheltered
-  Sub Alpine, Wet, Highly Exposed
-  Sub Alpine, Wet, Severely Exposed
-  Sub Alpine, Wet, Too Exposed for Forestry
-  Warm, Moist, Moderately Exposed
-  Warm, Moist, Sheltered



Reproduced by permission of Ordnance Survey on behalf of HMSO. © Crown copyright and database right [2022]. All rights reserved. Ordnance Survey Licence number [100021242]. © Getmapping Plc and Bluesky International Limited 2022.



Climatically the forest is in one of the more favourable locations of Lochaber for tree growth. A warm, moist and moderately exposed climate exists along the A82 corridor and the straths of the river Lundy and the Allt an Loin. The River Lundy corridor and the eastern part of the forest are the most sheltered. The conditions become cooler and wetter with altitude but only become sub-alpine at the upper margins of the forest.

Windblow has affected the upper area of Chapman Wood; this appears to have been caused initially by a single storm event in December 2012 but has subsequently expanded and a large area will need to be cleared to find windfirm boundaries. Pockets of windblow occur through the older stands of trees some due to the felling of adjacent coupes. Some of the older crops are approaching terminal height.

The District has a wet temperate climate (which is unlikely to become drier under climate change scenarios) and is especially suitable for Sitka spruce. A broad range of tree species grow well in the District but vigilance to climate change will be maintained.