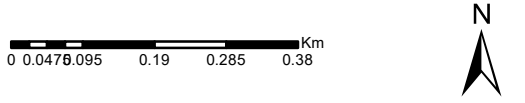


Map 4.4 Landscape analysis

Author: R.Wilson
Scale @ A3: 1:10,000
Date: 01/03/2023

Legend

- Forest Roads
- Registered ownership



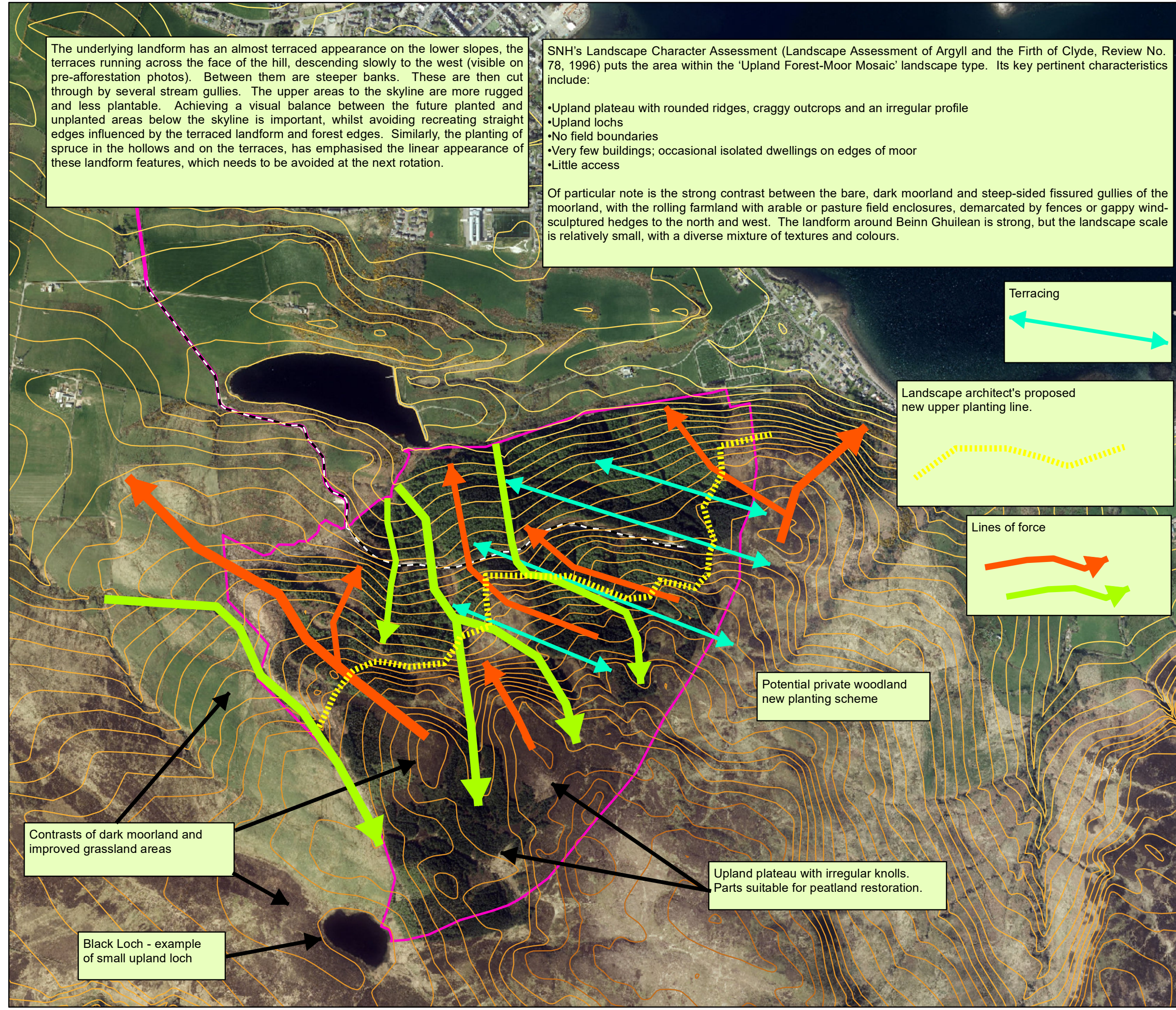
Reproduced by permission of Ordnance Survey on behalf of HMSO. © Crown copyright and database right [2023]. All rights reserved. Ordnance Survey Licence number [100021242]. © Getmapping Plc and Bluesky International Limited 2023.

The underlying landform has an almost terraced appearance on the lower slopes, the terraces running across the face of the hill, descending slowly to the west (visible on pre-afforestation photos). Between them are steeper banks. These are then cut through by several stream gullies. The upper areas to the skyline are more rugged and less plantable. Achieving a visual balance between the future planted and unplanted areas below the skyline is important, whilst avoiding recreating straight edges influenced by the terraced landform and forest edges. Similarly, the planting of spruce in the hollows and on the terraces, has emphasised the linear appearance of these landform features, which needs to be avoided at the next rotation.

SNH's Landscape Character Assessment (Landscape Assessment of Argyll and the Firth of Clyde, Review No. 78, 1996) puts the area within the 'Upland Forest-Moor Mosaic' landscape type. Its key pertinent characteristics include:

- Upland plateau with rounded ridges, craggy outcrops and an irregular profile
- Upland lochs
- No field boundaries
- Very few buildings; occasional isolated dwellings on edges of moor
- Little access

Of particular note is the strong contrast between the bare, dark moorland and steep-sided fissured gullies of the moorland, with the rolling farmland with arable or pasture field enclosures, demarcated by fences or gappy wind-sculptured hedges to the north and west. The landform around Beinn Ghulean is strong, but the landscape scale is relatively small, with a diverse mixture of textures and colours.



Terracing

Landscape architect's proposed new upper planting line.

Lines of force

Potential private woodland new planting scheme

Contrasts of dark moorland and improved grassland areas

Black Loch - example of small upland loch

Upland plateau with irregular knolls. Parts suitable for peatland restoration.