
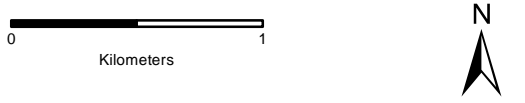


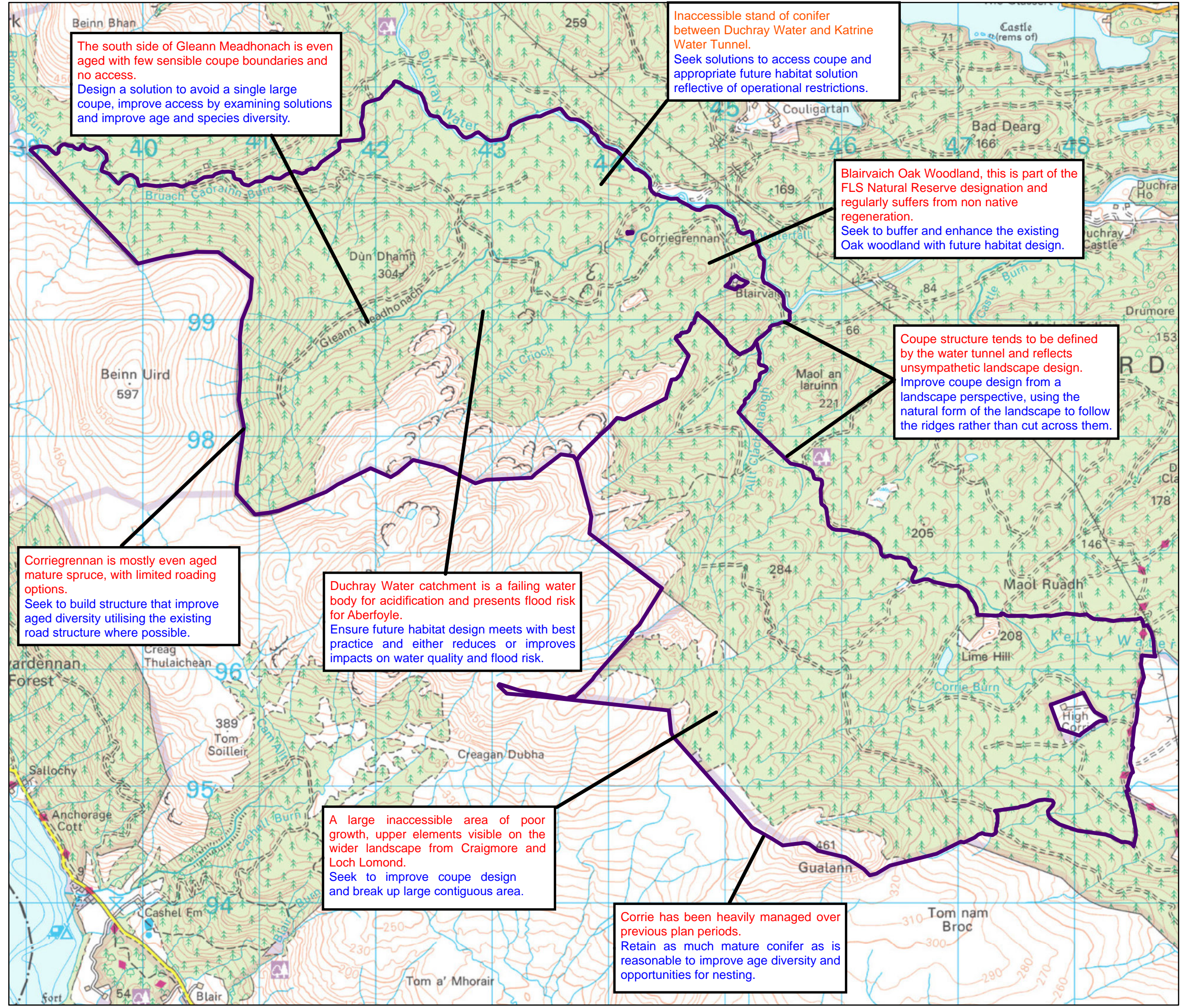
**West Loch Ard
 Land Management Plan
 M11 Concept**

Author: Simon Turner
 Scale @ A3: 1:30,000
 Date: 04/07/2022

 Land management plan boundary



Reproduced by permission of Ordnance Survey on behalf of HMSO.
 © Crown copyright and database right [2022]. All rights reserved.
 Ordnance Survey Licence number [100021242].
 © Getmapping Plc and Bluesky International Limited 2022.



The south side of Gleann Meadhonach is even aged with few sensible coupe boundaries and no access.
 Design a solution to avoid a single large coupe, improve access by examining solutions and improve age and species diversity.

Inaccessible stand of conifer between Duchray Water and Katrine Water Tunnel.
 Seek solutions to access coupe and appropriate future habitat solution reflective of operational restrictions.

Blairvaich Oak Woodland, this is part of the FLS Natural Reserve designation and regularly suffers from non native regeneration.
 Seek to buffer and enhance the existing Oak woodland with future habitat design.

Coupe structure tends to be defined by the water tunnel and reflects unsympathetic landscape design.
 Improve coupe design from a landscape perspective, using the natural form of the landscape to follow the ridges rather than cut across them.

Corriegrennan is mostly even aged mature spruce, with limited roading options.
 Seek to build structure that improve aged diversity utilising the existing road structure where possible.

Duchray Water catchment is a failing water body for acidification and presents flood risk for Aberfoyle.
 Ensure future habitat design meets with best practice and either reduces or improves impacts on water quality and flood risk.

A large inaccessible area of poor growth, upper elements visible on the wider landscape from Craigmore and Loch Lomond.
 Seek to improve coupe design and break up large contiguous area.

Corrie has been heavily managed over previous plan periods.
 Retain as much mature conifer as is reasonable to improve age diversity and opportunities for nesting.